

CERTIFICATE OF LOCATION OF GOVERNMENT CORNER

Northeast Corner of Section 18
Township 138 N, Range 29 W, 5th P.M.
STATE OF MINNESOTA, COUNTY OF Cass



A000593566

OFFICE OF THE COUNTY RECORDER
CASS COUNTY, MINNESOTA
CERTIFIED, FILED, AND/OR
RECORDED ON

6/17/2013 12:42:50 PM

AS DOC #: A000593566

PAGES: 2

REC FEES: 0.00

KATHRYN M. NORBY
CASS COUNTY RECORDER

BY SR Dep

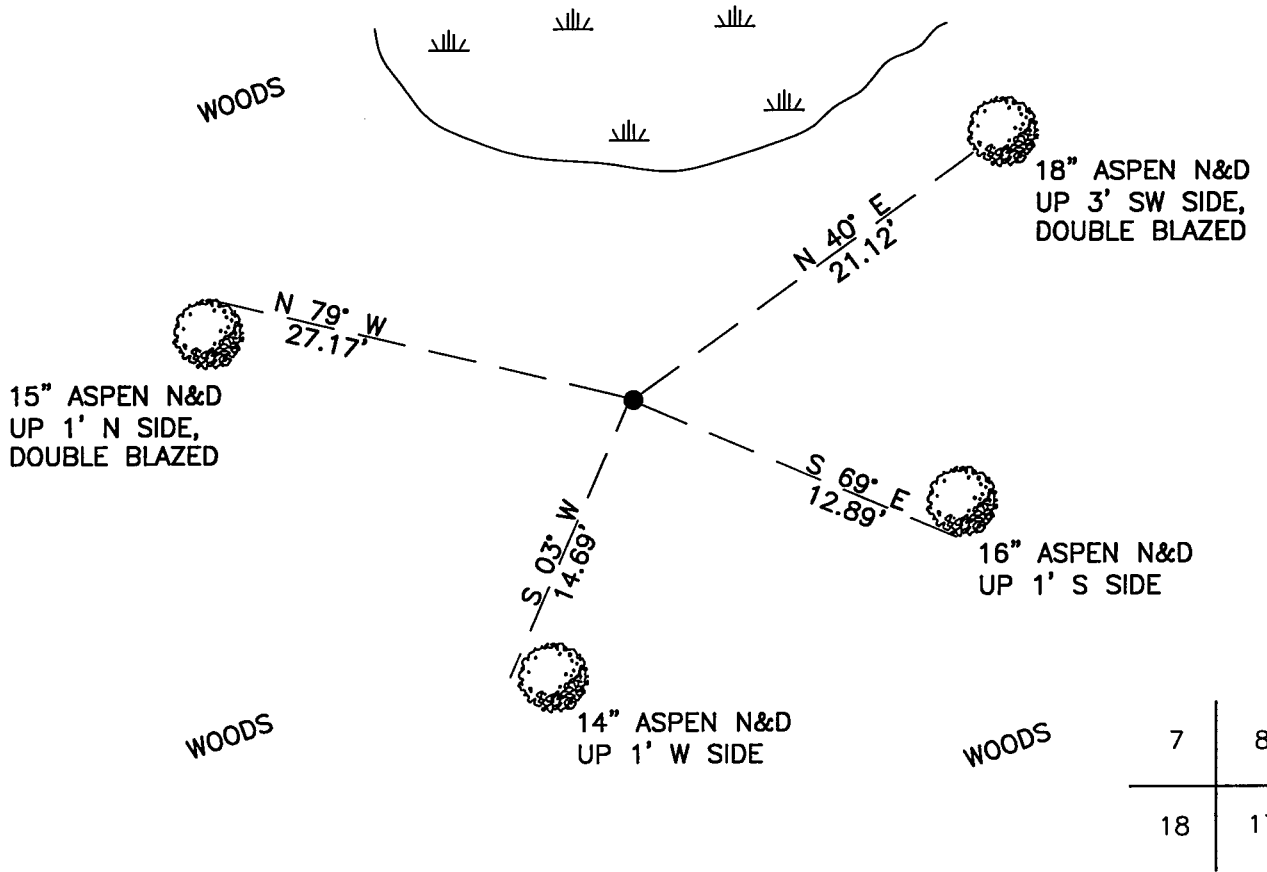
On 11/28/2012, found a(n): 1 1/2" Iron Pipe up 1.0' in Good Condition.

- left monument as found
- removed monument (explain)
- lowered monument
- raised monument

On _____, set a(n): _____

See "Statement of Evidence" for further details (on back)

(reserved for recording data)



"SKETCH OF REFERENCE TIES" (not to scale - bearings are magnetic)

Ties are measured to center of monument unless otherwise noted.

UNITS = Metric English

CASS COUNTY SOUTH COORDINATES

Northing: 326247.444

Easting: 520177.902

NAD 83/2007 Adjustment.
Obtained by RTK GPS observations.

I hereby certify that this survey, plan, or report was prepared by me or under my direct supervision, and that I am a duly Licensed Land Surveyor under the laws of the State of Minnesota.

signature

2-1-13
date

Jarrett M. Leas, Minnesota License No. 42619

Page 1 of 2 A000593566



Statement of Evidence

Northeast corner Section 18, Township 138 North, Range 29 West, 5th Principal Meridian.

- Aug. 1865 G.B.Wright, GLO Deputy Surveyor, in the notes of the subdivision of Township 138 North, Range 30 West set a post for the original corner and referenced it as follows:
 5" Bl. Pine N 18° E 585 links 8" Tamarack S 86° E 703 links
 12" N Pine N 57° W 363 links
 Said records are on file at the Minnesota Historical Society, St. Paul, Minnesota, copies are filed with the Cass County Surveyor's Office (CCSO).

- Dec. 1903 W.Hallett, Township Road Order, Surveyor's Report, on file in the CCSO, indicates "sec corner" and the following witness:
 14" N Pine Stump N 55° W 363 links 10" N Pine N 23° E 123 links
 8" B Pine N 28° W 29 links 10" N Pine S 51° W 45 links
 6" B Pine S 31° E 39 links

- Aug. David Landecker, RLS#17008, shows a found monument on a certificate of survey.

- Dec. 2004 Bruce Grivna, RLS#17253, shows a found monument on a certificate of survey.

- Nov. 2012 A KLJ survey crew found a 1 ½" Iron Pipe, and is witnessed with the ties shown on the front of this certificate. Jarrett Leas, RLS #42619, after analysis of record and survey information accepts this monument as the correct perpetuation of the corner.