

# CERTIFICATE OF LOCATION OF GOVERNMENT CORNER

N 1/4 Corner of Section 17, Township 139, Range 30, 5TH P.M.

STATE OF MINNESOTA, County of CASS

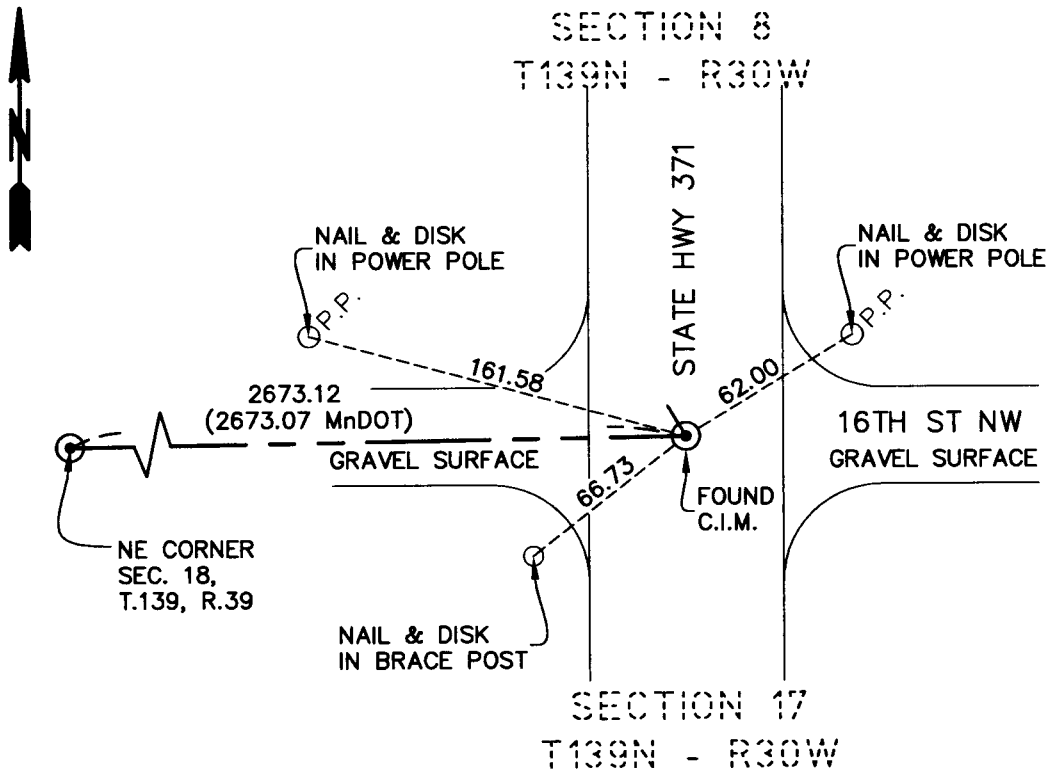
At the corner location shown on the sketch:

On 12-18-08 found a Cass County cast iron monument 0.7 feet below the asphalt surface.

left monument as found,  lowered monument,  removed monument (explain)

On \_\_\_\_\_ placed a \_\_\_\_\_

### SKETCH OF REFERENCE TIES



NOT TO SCALE

Statement of evidence relative to this corner location is on back of page.

I hereby certify that this document and the data contained herein was prepared by me or under my direct supervision.

*Norby & Co* 11-6-09  
SIGNATURE DATE

Registration No. 40035

- Land Surveyor,  Professional Engineer
- County Surveyor,  County Engineer



**A000592271**

OFFICE OF THE COUNTY RECORDER  
CASS COUNTY, MINNESOTA  
CERTIFIED, FILED, AND/OR  
RECORDED ON

5/7/2013 10:39:33 AM

AS DOC #: A000592271

PAGES: 2

REC FEES: 0.00

KATHRYN M. NORBY  
CASS COUNTY RECORDER

BY SR Dep

Page 1 of 2 A000592271

STATEMENT OF EVIDENCE

The North Quarter Corner of Section 17, Township 139 North, Range 30 West of the 5th Principal Meridian.

This corner was originally a wood post set by the Government Land Office in 1865.

In 1907, Mr. John Curo, Cass County Surveyor, found evidence of the one original bearing tree and set a 8"X8"X36" concrete post. (Book A of Surveys page 138)

In, 1967, County Surveyor R.F. Schneider found the concrete post and replaced it with a ½" iron pipe and recorded a Certificate of Location.

The Minnesota Department of Transportation's Right of Way Plat No. 11-3, recorded in 1983 under Doc. No. 270483, shows a ½" iron pipe at the corner with an azimuth and distance to the Northeast corner of Section 18, Township 139 North, Range 30 West.

On 12-18-08, a survey crew from Uiteig Engineers found a Cass County cast iron monument at the correct distance stated on the aforementioned MnDOT plat. Ties were set as shown. No records could be found as to when the cast iron monument was set.