



A000592109

OFFICE OF THE COUNTY RECORDER  
CASS COUNTY, MINNESOTA  
CERTIFIED, FILED, AND/OR  
RECORDED ON

5/2/2013 11:50:40 AM

AS DOC #: A000592109

PAGES: 2

REC FEES: 0.00

KATHRYN M. NORBY  
CASS COUNTY RECORDER

BY SR \_\_\_\_\_ Dep

Page 1 of 2 A000592109

Index No. L-13

# CERTIFICATE OF LOCATION OF GOVERNMENT CORNER

EAST QUARTER Corner of Section 16, Township 134, Range 32  
5TH Principal Meridian, State of Minnesota, County of CASS

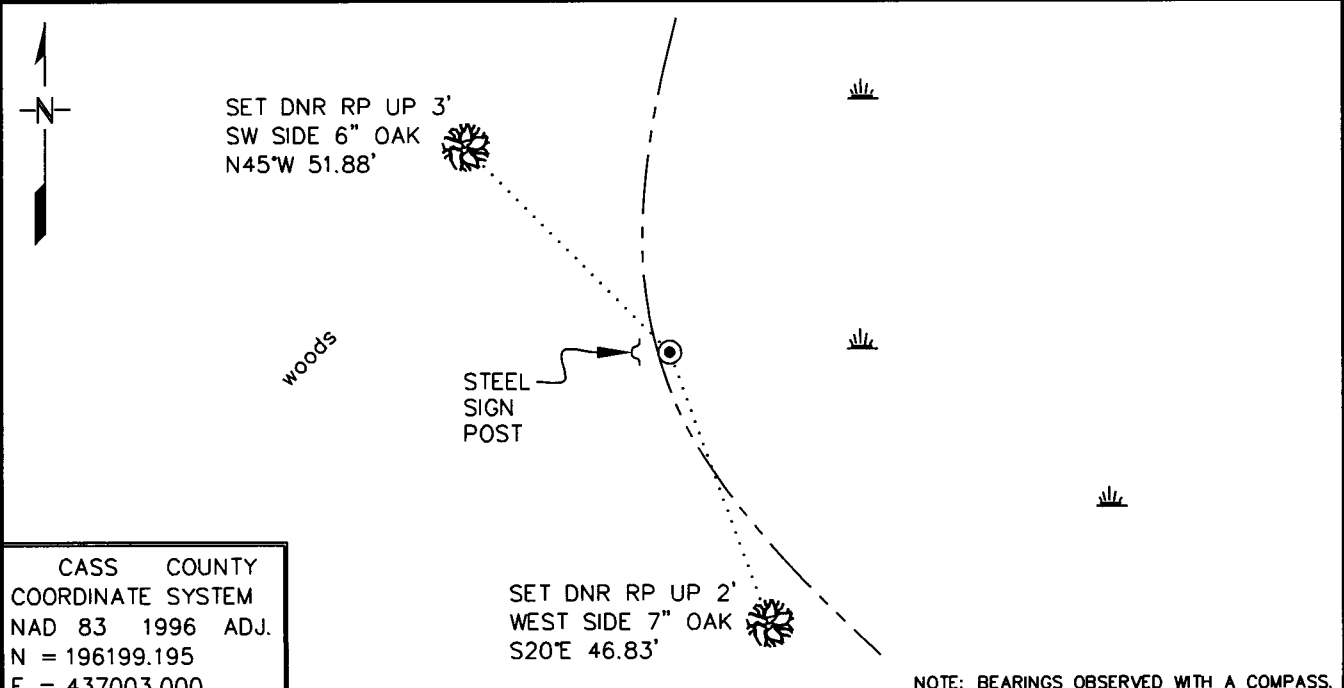
At the corner location shown on the sketch:

On \_\_\_\_\_ found a \_\_\_\_\_  
DATE

left monument as found,  lowered monument,  removed monument (explain)

On 5/5/11 Placed a 1" X 78" INSIDE DIAMETER IRON PIPE WITH CAP STAMPED  
DATE

"MN DNR LS 47461" UP 2' WITNESSED BY STEEL SIGN POST AT LOST POSITION



CASS COUNTY  
COORDINATE SYSTEM  
NAD 83 1996 ADJ.  
N = 196199.195  
E = 437003.000

NOTE: BEARINGS OBSERVED WITH A COMPASS.

Statement of evidence for this corner location is on back of this page.

RAL - JUNE 2011  
FOM01910.00.00.01

I certify that this document was researched and prepared by me or under my direct supervision.

SIGNATURE *Patrick J. ...* DATE 4/24/13 License Number 47461

Title:  Land Surveyor  County Surveyor

STATEMENT OF EVIDENCE**East Quarter Corner of Section 16, Township 134 North, Range 32 West, 5<sup>th</sup> P.M.**

The Department of Natural Resources, Division of Lands and Minerals, contacted the following offices for information regarding this corner:

Cass County Recorder  
 Cass County Surveyor  
 Cass County Highway Dept.  
 Westwood Professional Services - Brainerd  
 Carnell Land Surveying, LLC  
 Arro of Park Rapids, LLC  
 Nyberg Surveying  
 Festler Land Surveying  
 Kramer Leas Deleo, PC  
 Widseth Smith Nolting - Baxter

1870 This corner was established by the Government Land Office. A post was set to mark the corner and was witnessed by the following bearing trees:

W. Oak	8"	N6 ½°E	6.74 chains
Dead Tam.	5"	S21°W	4 links

1915 Ditch alignment field notes in Box 4, Book 1A, Page 87 on file at the Cass County Surveyor's office show this corner 19' east of the alignment at the west edge of an open marsh.

2011 In May, the DNR survey crew made a search for evidence of the corner and found nothing. The ditch was never constructed through this area. The corner was considered lost and was established midway and online between the Northeast and Southeast corners of the Section. A 1" x 78" inside diameter iron pipe with cap stamped "MN DNR LS 47461" was set up 2' at the west edge of a marsh to mark the corner location.

Northeast Corner Section 16 bears N00°06'19"W 2669.43'  
 Southeast Corner Section 16 bears S00°06'19"E 2669.43'

For more information on our survey in this area, please contact the MN DNR, Division of Lands and Minerals, Survey Section, 1601 Minnesota Drive, Brainerd, MN 56401

