

# CERTIFICATE OF LOCATION OF GOVERNMENT CORNER



A000591926

OFFICE OF THE COUNTY RECORDER  
CASS COUNTY, MINNESOTA  
CERTIFIED, FILED, AND/OR  
RECORDED ON

4/26/2013 11:00:17 AM

AS DOC #: A000591926

PAGES: 2

REC FEES: 0.00

KATHRYN M. NORBY  
CASS COUNTY RECORDER

BY SR \_\_\_\_\_ Dep

Northeast Corner of Section 8  
Township 138 N, Range 32 W, 5th P.M.  
STATE OF MINNESOTA, COUNTY OF Cass

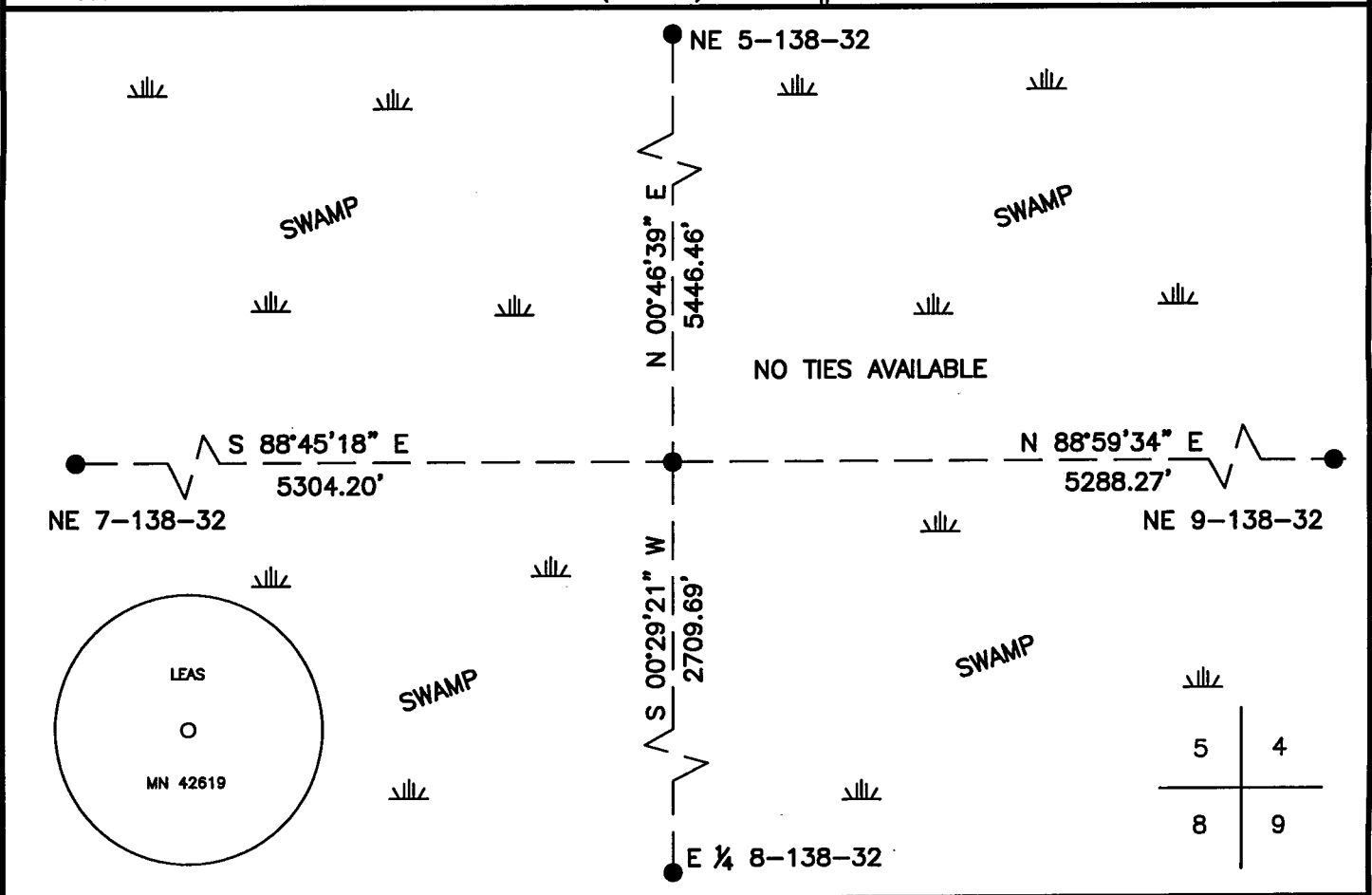
On \_\_\_\_\_, found a(n): \_\_\_\_\_  
DATE

- left monument as found
- lowered monument
- removed monument (explain)
- raised monument

On 10/17/2012, set a(n): 5/8" X 24" Rebar with Plastic  
Cap Stamped "Leas MN 42619" up 0.4' Above Ground in Swamp.

See "Statement of Evidence" for further details (on back)

(reserved for recording data)



"SKETCH OF REFERENCE TIES"  
(not to scale - bearings are magnetic)

Ties are measured to center of monument unless otherwise noted.

UNITS =  Metric  English

CASS COUNTY SOUTH COORDINATES

Northing: 330882.20

Easting: 430344.65

NAD 83/2007 Adjustment.  
Obtained by RTK GPS observations.

I hereby certify that this survey, plan, or report was prepared by me or under my direct supervision, and that I am a duly Licensed Land Surveyor under the laws of the State of Minnesota.

signature  
Jarrett M. Leas, Minnesota License No. 42619

3-21-13  
date

Page 1 of 2  
A000591926



**Statement of Evidence**

***Northeast corner Section 8, Township 138 North, Range 32 West, Cass County Minnesota***

- 1860 The Original Survey was run and a post was set to mark the corner with the following accessories: 4" Tamarack N 46 ½ W 65 links, 4" Tamarack S 31 E 110 links, 5" Tamarack S 46 W 127 links, and a 4" Tamarack N 45 ½ E 58 links.
- 2012 Kadrmas Lee & Jackson field crews searched the area and found nothing. This corner was computed using a double proportion position using the following corners: EQ 8, NE 5, NE 7, and the NE 9. A 5/8" x 24" rebar with a plastic cap stamped "Leas MN 42619" was set to mark the corner in a swamp. No ties are available.
- 2012 Jarrett Leas, RLS 42619, after analysis of record and survey information accepts this monument as the true location of the corner.

Contacts pertaining to this corner are as follows:

Cass County Surveyor's Office  
Cass County Recorder's Office  
Cass County Engineer's Office  
MN Department of Natural Resources  
MN Department of Transportation  
Bruce Skipton RLS 17768