

CERTIFICATE OF LOCATION OF GOVERNMENT CORNER

South Quarter Corner of Section 32

Township 139 N, Range 28 W, 5th P.M.

STATE OF MINNESOTA, COUNTY OF Cass



A000591556

OFFICE OF THE COUNTY RECORDER
CASS COUNTY, MINNESOTA
CERTIFIED, FILED, AND/OR
RECORDED ON

4/15/2013 10:53:26 AM

AS DOC #: A000591556

PAGES: 2

REC FEES: 0.00

KATHRYN M. NORBY

CASS COUNTY RECORDER

BY SR Dep

On 12/14/2012, found a(n): 2 1/2" Iron Pipe, up 1.5'

DATE

left monument as found

removed monument (explain)

lowered monument

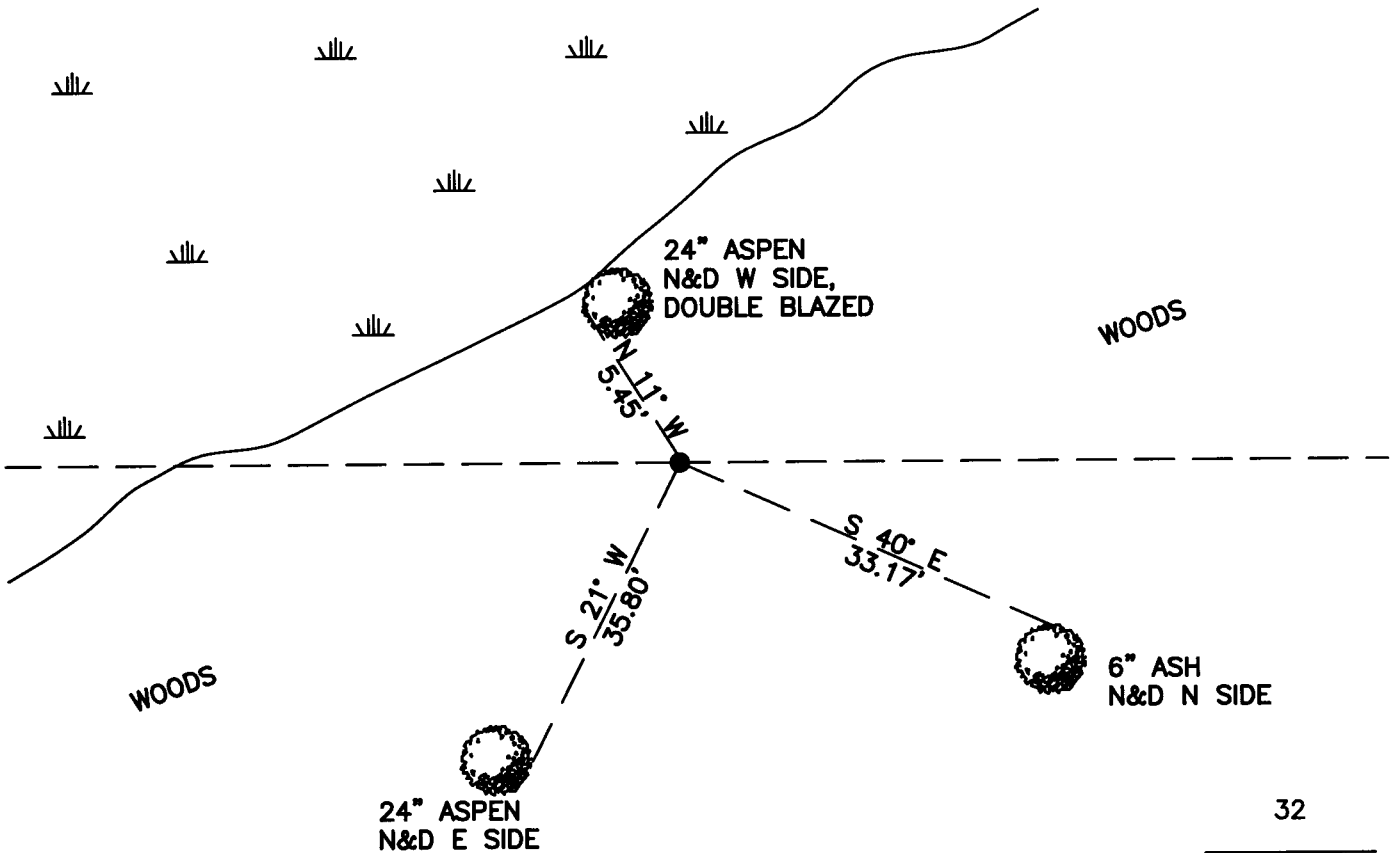
raised monument

On _____, set a(n): _____

DATE

See "Statement of Evidence" for further details (on back)

(reserved for recording data)



32

5

"SKETCH OF REFERENCE TIES" (not to scale - bearings are magnetic)

Ties are measured to center of monument unless otherwise noted.

UNITS = Metric English

CASS COUNTY SOUTH COORDINATES

Northing: 336663.835

Easting: 554528.645

NAD 83/2007 Adjustment.

Obtained by RTK GPS observations.

I hereby certify that this survey, plan, or report was prepared by me or under my direct supervision, and that I am a duly Licensed Land Surveyor under the laws of the State of Minnesota.

signature

3-21-13
date

Jarrett M. Leas, Minnesota License No. 42619

Page 1 of 2
A000591556

Statement of Evidence

South Quarter corner of Section 32, Township 139 North, Range 28 West, 5th Principal Meridian.

- 1863 The US General Land Office, in the notes of the subdivision of Township 139 North, Range 29 West set a post for the original corner and referenced it as follows:
6" W. Birch N 9° E 10 links 5" Maple S 8° E 2 links
Said records are on file at the Minnesota Historical Society, St. Paul, Minnesota, copies are filed with the Cass County Surveyor's Office (CCSO).
- 1918 Ben Clark, RLS 231, Survey Record 434, Book C, Page 303, on file in the CCSO, indicates a Jack Pine post 4"X3' was found. Mr. Clark marked the following bearing tree:
13" W. Birch S 57° W 75'
- 1919 Ben Clark, RLS 231, Survey Record 434, Book C, Pages 337-338, on file in the CCSO, indicates an iron pipe was set, stating, "Then went to the south side Sec. 32. Found a white birch tree marked B.T. Birch S. 50° W. 74.7 ft. with pine post marked S. 32 S. 5 on co. line bet. Cass and Crow Wing co. Then set an iron pipe 4 ft. long 2 ½ in. diam. Drove the same in ground 2 ft. for the 1/4S. on South side Sec. 32. No other trees or stones near. All burnt over land."
- 1922 Ben Clark RLS 231, File cabinet E-14, on file in the Cass County Records Office, a county resurvey indicates an iron monument.
- 1939 The corner card for this corner on file at the CCSO, indicates the CCC Washburn Lake field book no. 13, page 45, a found 2" iron pipe and a 8" W. Birch S 56° W at 2651' from west. KLJ attempts to locate the CCC field books or copies were unsuccessful.
- 1981 David Landecker, RLS 17008, according to the corresponding corner card located at the Crow Wing County Surveyors Office, found a 2 1/4" iron pipe 18" up at base of 8" poplar and marked the following bearing trees:
- | | | | | | |
|------------|---------|---------|-------------|---------|--------|
| 6" Bur Oak | N 25° W | 45.45' | 10" Poplar | N 15° W | 5.37' |
| 11" Poplar | N 60° E | 25.37' | 8" Poplar | S 15° E | 1.30' |
| 18" Spruce | S 20° W | 155.35' | 23" W. Pine | S 55° W | 76.55' |
| 9" Ash | S 85° W | 64.90' | | | |
- 1989 Tony Kerick, RLS 12266, Crow Wing County Surveyor, corner record number 515, document number 419103, on file at the Crow Wing County Records Office, found a 2" iron pipe up 18" at base Poplar tree. Mr. Kerick cut the poplar tree down and plumbed up the pipe. The 1981 Landecker trees were retied and one new bearing tree was marked. The corner referenced by the following:
- | | | | | | |
|------------|---------|--------|------------|---------|--------|
| 6" Bur Oak | N 25° W | 45.74' | 10" Poplar | N 15° W | 5.62' |
| 11" Poplar | N 60° E | 25.14' | 3" Ash | S 40° E | 33.17' |
- 2012 A KLJ survey crew found a 2 ½" capped iron pipe, and is witnessed with the ties shown on the front of this certificate. Jarrett Leas, RLS #42619, after analysis of record and survey information accepts this monument as the correct perpetuation of the corner.

