

CERTIFICATE OF LOCATION OF GOVERNMENT CORNER

Northeast Corner of Section 33
Township 139 N , Range 28 W , 5th P.M.
STATE OF MINNESOTA, COUNTY OF Cass



A000591548

OFFICE OF THE COUNTY RECORDER
CASS COUNTY, MINNESOTA
CERTIFIED, FILED, AND/OR
RECORDED ON

4/15/2013 10:53:18 AM

AS DOC #: A000591548

PAGES: 2

REC FEES: 0.00

KATHRYN M. NORBY
CASS COUNTY RECORDER

BY SR _____ Dep

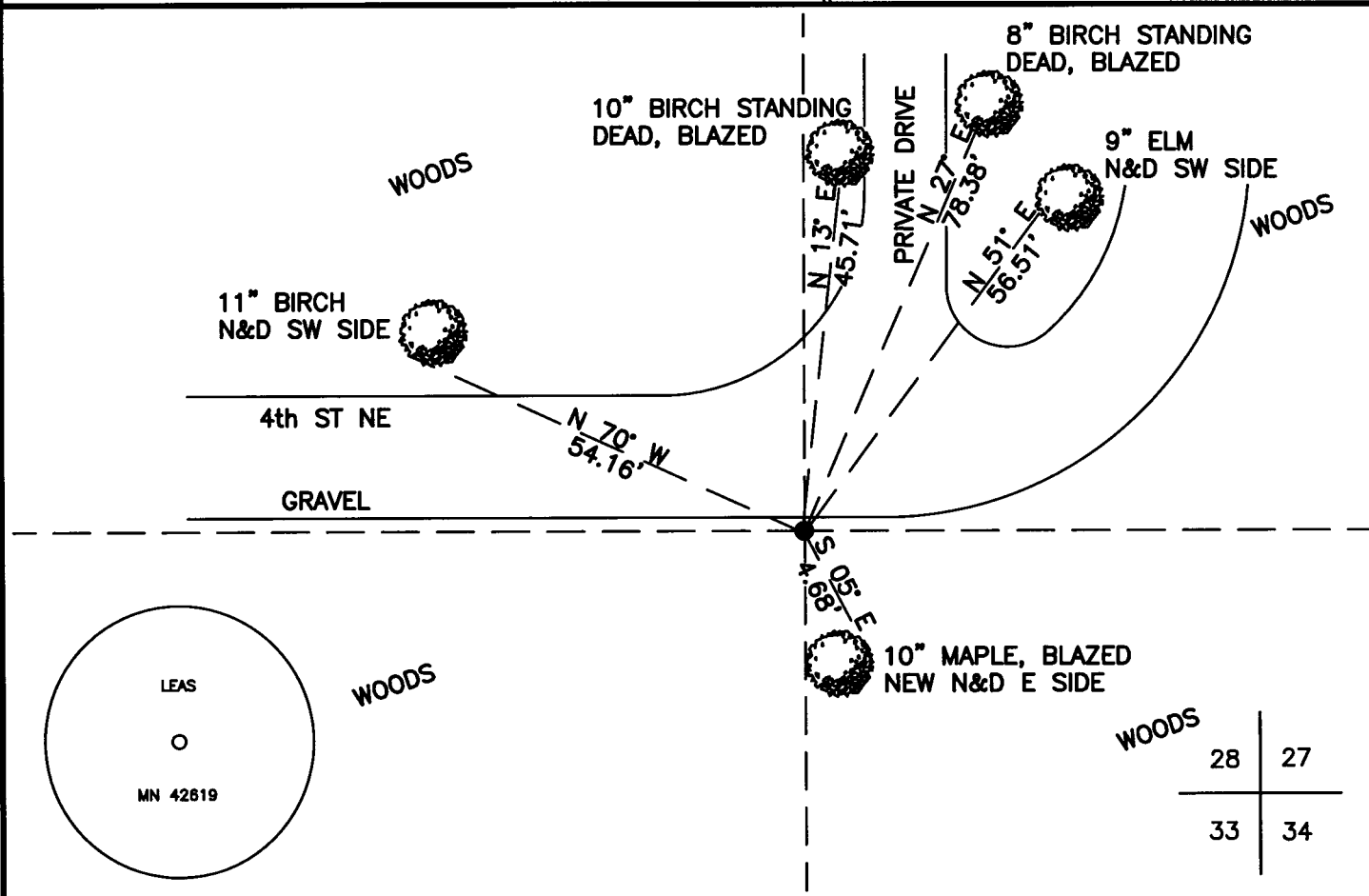
On 12/5/2012, found a(n): 3/4" Iron Pipe With Plastic Cap
"RLS 17008" Badly Bent on Southerly Shoulder of 4th St NE.

- left monument as found
- lowered monument
- removed monument (explain)
- raised monument

On 12/5/2012, set a(n): 5/8"X24" Rebar With Plastic Cap
Stamped "Leas MN 42619" Down 0.3' in Place of Existing 3/4" Capped Bent Iron Pipe.

See "Statement of Evidence" for further details (on back)

(reserved for recording data)



WOODS	28	27
	33	34

"SKETCH OF REFERENCE TIES"

(not to scale - bearings are magnetic)

Ties are measured to center of monument unless otherwise noted.

UNITS = Metric English

CASS COUNTY SOUTH COORDINATES

Northing: 341962.541

Easting: 562497.967

NAD 83/2007 Adjustment.

Obtained by RTK GPS observations.

I hereby certify that this survey, plan, or report was prepared by me or under my direct supervision, and that I am a duly Licensed Land Surveyor under the laws of the State of Minnesota.

Jarrett M. Leas
signature

3-21-17
date

Jarrett M. Leas, Minnesota License No. 42619

Page 1 of 2 A000591548

Statement of Evidence

Northeast corner of Section 33, Township 139 North, Range 28 West, 5th Principal Meridian.

- 1864 The US General Land Office, in the notes of the subdivision of Township 139 North, Range 29 West set a post for the original corner and referenced it as follows:
10" Aspen N 46° E 20 links 12" Aspen N 28° W 25 links
8" W. Birch S 20° E 3 links 10" Aspen S 45° W 25 links
Said records are on file at the Minnesota Historical Society, St. Paul, Minnesota, copies are filed with the Cass County Surveyor's Office (CCSO).
- 1919 Ben Clark, RLS 231, Survey Record 434, Book C, Page 336, on file in the CCSO, indicates an oak post was found and an IM was set, stating, "found an Oak post marked S. 27-28-33-34 with a mound of stone around it. So being satisfied this is the true cor. I set an iron pipe in hole with 2-40 penny spikes in bottom end. Drove in ground and put in stone & clay."
- 1922 Ben Clark RLS 231, Document No. 69796, on file in the CCSO, a county resurvey of sections 27, 28, 33, and 34 indicates an iron monument.
- 1939 The corner card for this corner on file at the CCSO, indicates the CCC Washburn Lake field book no. 12, pages 30 and 32 set an approximate corner at 5280' from the east and at 5251' from the west. KLJ attempts to locate the CCC field books or copies were unsuccessful.
- 1997 Landecker & Associates Inc., document page number 629, on file in the CCSO, a certificate of survey of Government Lot 3 indicates an iron monument set marked by license No. 17008.
- 2012 A KLJ survey crew found a 3/4" iron pipe with plastic cap stamped "RLS 17008". The 3/4" pipe was found badly bent, and was removed. A 5/8"X24" rebar with plastic cap stamped "Leas MN 42619" was set at the vertical base of the found pipe and is witnessed with the ties shown on the front of this certificate. Jarrett Leas, RLS #42619, after analysis of record and survey information accepts this monument as the correct perpetuation of the corner.