

CERTIFICATE OF LOCATION OF GOVERNMENT CORNER

East Quarter Corner of Section 29
Township 139 N , Range 28 W , 5th P.M.
STATE OF MINNESOTA, COUNTY OF Cass



A000591546

**OFFICE OF THE COUNTY RECORDER
CASS COUNTY, MINNESOTA
CERTIFIED, FILED, AND/OR
RECORDED ON**

4/15/2013 10:53:16 AM

AS DOC #: **A000591546**

PAGES: **2**

REC FEES: **0.00**

**KATHRYN M. NORBY
CASS COUNTY RECORDER**

BY SR Dep

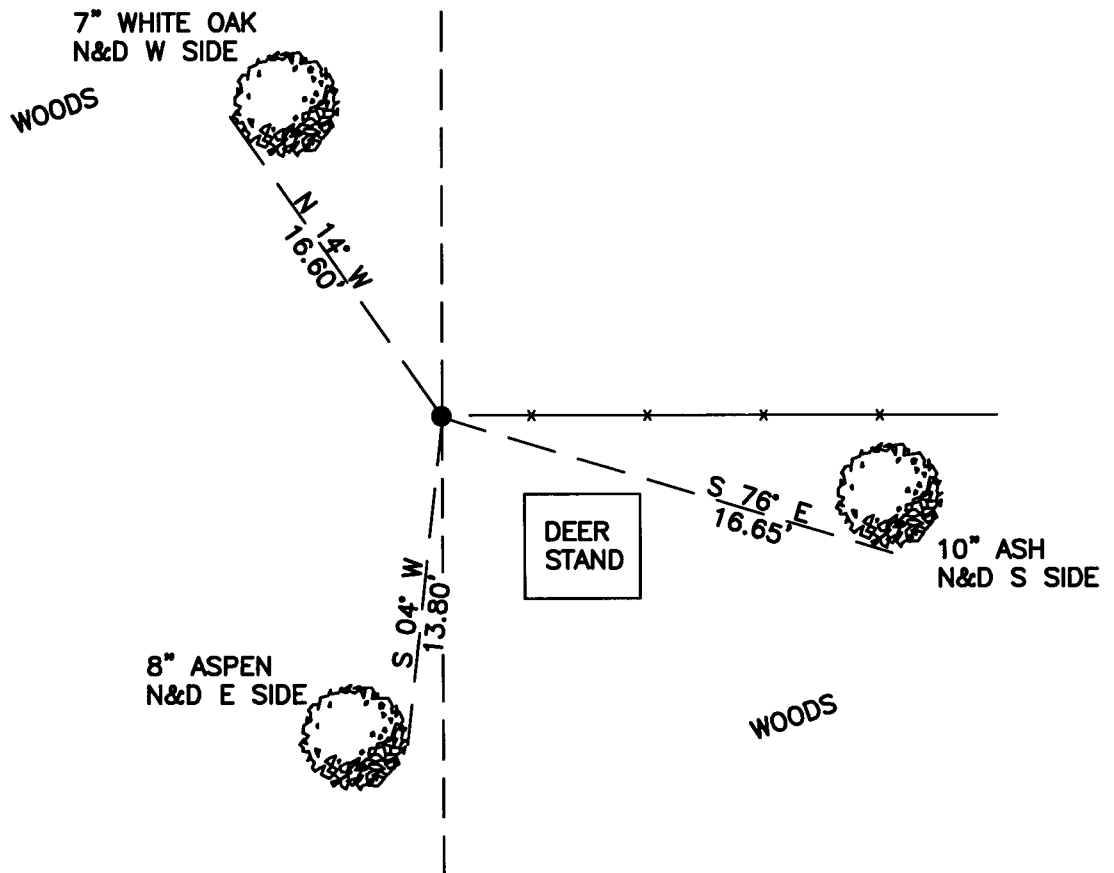
On 12/20/2012, found a(n): 2 1/2" Iron Pipe Up 1.5' With a T Post Inside.

- | | |
|--|---|
| <input checked="" type="checkbox"/> left monument as found | <input type="checkbox"/> lowered monument |
| <input type="checkbox"/> removed monument (explain) | <input type="checkbox"/> raised monument |

On _____, set a(n): _____

See "Statement of Evidence" for further details (on back)

(reserved for recording data)



29 | 28

"SKETCH OF REFERENCE TIES" (not to scale - bearings are magnetic)

Ties are measured to center of monument unless otherwise noted.

UNITS = Metric English

CASS COUNTY SOUTH COORDINATES

Northing: 344613.561
Easting: 557105.106

NAD 83/2007 Adjustment.
Obtained by RTK GPS observations.

I hereby certify that this survey, plan, or report was prepared by me or under my direct supervision, and that I am a duly Licensed Land Surveyor under the laws of the State of Minnesota.

signature
Jarrett M. Leas, Minnesota License No. 42619

3-21-13
date

Page 1 of 2 A000591546

Statement of Evidence

East Quarter corner of Section 29, Township 139 North, Range 28 West, 5th Principal Meridian.

- 1864 The US General Land Office, in the notes of the subdivision of Township 139 North, Range 29 West set a post for the original corner and referenced it as follows:
7" Soft Maple N 23° E 17 links 8" Soft Maple S 80° W 13½ links
Said records are on file at the Minnesota Historical Society, St. Paul, Minnesota, copies are filed with the Cass County Surveyor's Office (CCSO).
- 1918 Ben Clark, RLS 231, Survey Record 434, Book C, Page 305, on file in the CCSO, indicates setting a Poplar post 3' long and 3" square witnessed by:
8" Poplar S 35° E 19.6' 20" Pine Stump N 60° W 52.2'
- 1919 Ben Clark, RLS 231, Survey Record 434, Book C, Page 337, on file in the CCSO, indicates an IP was set, "so being satisfied that is the true ¼ S. I set an iron pipe 4 ft. long 2½ in. diam"
- 1922 Ben Clark RLS 231, Document No. 69796, on file in the CCSO, a county resurvey of sections 27, 28, 33, and 34 indicates an iron monument.
- 2012 A KLJ survey crew found a 2 1/2" iron pipe, and is witnessed with the ties shown on the front of this certificate. Jarrett Leas, RLS #42619, after analysis of record and survey information accepts this monument as the correct perpetuation of the corner.

