



A000591538

OFFICE OF THE COUNTY RECORDER
CASS COUNTY, MINNESOTA
CERTIFIED, FILED, AND/OR
RECORDED ON

4/15/2013 10:53:08 AM

AS DOC #: A000591538

PAGES: 2

REC FEES: 0.00

KATHRYN M. NORBY
CASS COUNTY RECORDER

BY SR _____ Dep

I hereby certify that this survey, plan, or report was prepared by me or under my direct supervision, and that I am a duly Licensed Land Surveyor under the laws of the State of Minnesota.

Signature: James Kramer
James Kramer

Date: 3-19-2013

Reg. No. 23668

NAD 1996 (HARN) CASS COUNTY COORDINATES

N= 238372.478 E= 431461.816

CERTIFICATE OF LOCATION OF GOVERNMENT CORNER

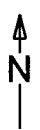
INDEX NO. C-9, East Quarter CORNER OF SECTION 5, TOWNSHIP 135, RANGE 32,
STATE OF MINNESOTA, COUNTY OF CASS

AT THE CORNER LOCATION SHOWN ON THE SKETCH:

- ON _____ DATE _____ FOUND A(N) _____
- LEFT MONUMENT AS FOUND. LOWERED MONUMENT. REMOVED MONUMENT (EXPLAIN)
- ON 3-19-2013 DATE _____ PLACED A(IN) 30' x 1/2" capped pipe, down 0.3' on centerline of road.

SKETCH OF REFERENCE TIES

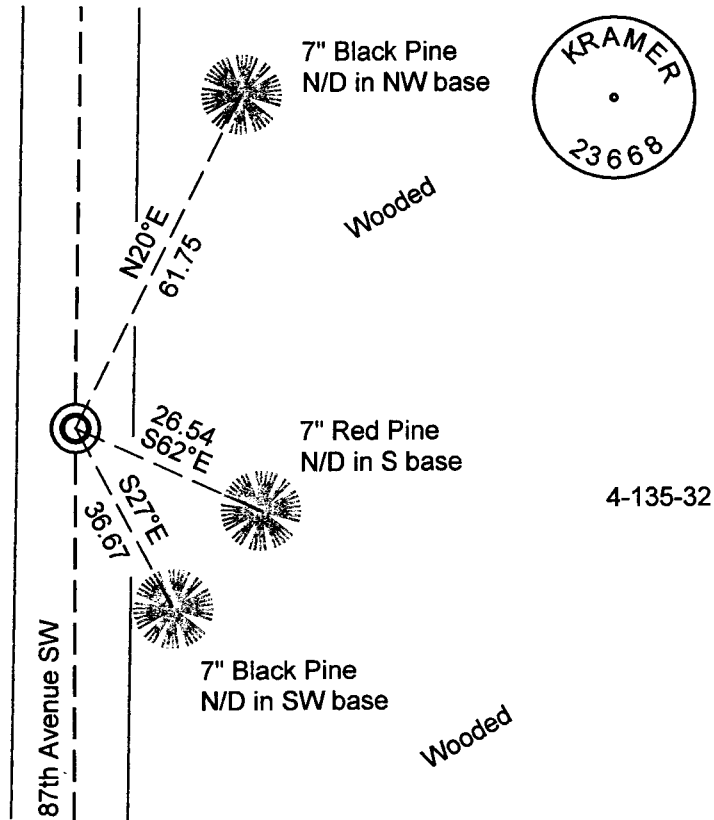
MONUMENT MARKED:



Magnetic Declination Assumed 6°30'
Sketch Not to Scale

5-135-32

Logged Area



KLD
1120 Industrial Park Road SW
Brainerd, MN 56401
218-829-5333

KRAMER LEAS DELEO
SURVEYING • ENGINEERING • PLANNING
BRAINERD ST. CLOUD

STATEMENT OF EVIDENCE RELATIVE TO THIS CORNER LOCATION IS ON BACK OF PAGE

Page 1 of 2
A000591538





Index No. C-9

Statement of Evidence

East Quarter Corner of Section 5, T135N, R 32 W, Cass County, Minnesota

- 1866 The Original Government Survey was run and a post was set to mark the corner. Ties were made to a Yellow Pine and a Black Pine.

- 1901 Township road order shows no survey. (CCSO corner card)

- 2013 Crews from Kramer Leas Deleo searched the area and found no evidence of the corner or accessories. A 30" x 1/2" pipe with RLS cap 23668 was set at a lost location between indexed corners A-9 and E-9. Bearing ties were made to two Black Pine and a Red Pine.

- 2013 On February 19, 2013, James Kramer, PLS #23668, analysis of record and survey information indicates the set 1/2" pipe to be the perpetuation of the original corner.