

# CERTIFICATE OF LOCATION OF GOVERNMENT CORNER

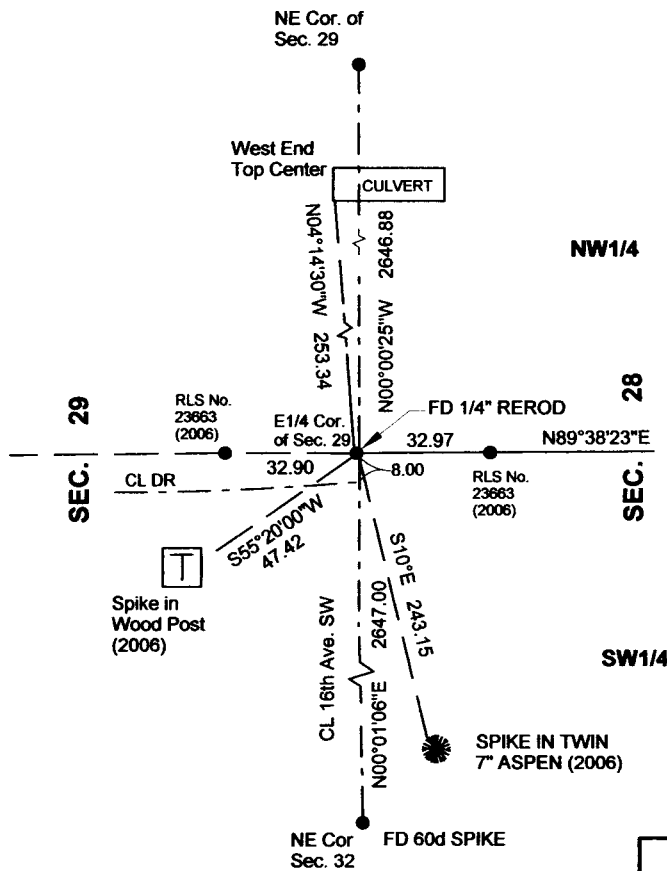
E1/4 Corner of Section 29, Township 137N, Range 29W, 5th p.m., State of Minnesota, County of Cass

At the corner location shown on the sketch:

On 04/09/2012 found a 1/4" RE-ROD, 1.0' DOWN AND 1.4' WEST OF CL 16TH AVE. SW  
Date

left monument as found                      lowered monument                      removed monument (explain)  
On \_\_\_\_\_ placed a \_\_\_\_\_  
Date

## SKETCH OF REFERENCE TIES



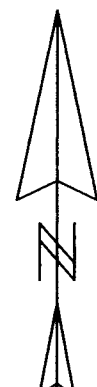
Tie distances are measured to the spikes

Cass County Coordinate System (South Zone)  
N=281165.4825 E=525160.6956

○ Set Re-Rod with RLS cap No. 17774

● Found pipe (Unless otherwise noted)

☐ Telephone pedestal/Wood Post



**NOT TO SCALE**

Statement of evidence relative to this corner location is on back of page.

I hereby certify that this document and the data contained herein was prepared by me or under my direct supervision.

*Marvin R. Kohout*      27 SEPT 2012  
Marvin R. Kohout      Date

Registration No. 17774

Land surveyor

OFFICE OF COUNTY RECORDER



**A000591521**

OFFICE OF THE COUNTY RECORDER  
CASS COUNTY, MINNESOTA  
CERTIFIED, FILED, AND/OR  
RECORDED ON

4/15/2013 10:52:51 AM

AS DOC #: A000591521

PAGES: 2

REC FEES: 0.00

KATHRYN M. NORBY  
CASS COUNTY RECORDER

BY SR Dep

Page 1 of 2 A000591521

**INDEX NO. T.0-9.0****STATEMENT OF EVIDENCE****EAST QUARTER CORNER OF SECTION 29, TOWNSHIP 137 N., RANGE 29 W., 5<sup>TH</sup> P.M.**

- 1865 JULY DEPUTY SURVEYOR GEORGE B. WRIGHT, IN THE ORIGINAL GOVERNMENT SURVEY, SET A POST.
- 1996 DAVID LANDECKER, LS NO.17008, LANDECKER AND ASSOC.'S, INC., ON HIS CERTIFICATE OF SURVEY, INDICATES HE SET AN IRON MONUMENT WITH RLS CAP 17008 TO MARK THE W1/4 CORNER LOCATION. SURVEY RECORD 266
- 2006 OCT JARRETT LEAS, LS NO.42619, KRAMER LEAS DELEO, INC. (KLD), FOUND A 1/4" REROD AND RECORDED A CORNER CERTIFICATE FILED AS DOC. A000518628. 4 REFERENCES MADE
- 2006 DEC. JARRETT LEAS, LS NO.42619, KLD, RECORDED THE PLAT OF LONE JACK PINE ON WHICH IS SHOWN A SECTION SUBDIVISION. THE PLAT INDICATES AN IRON MONUMENT AT THE CORNER. RECORDER'S DOC. A000521343
- 2012 APRIL DOUG STILLE AND MARVIN KOHOUT, LS NO. 17774, OF KOHOUT LAND SURVEYING, FOUND THE 4 REFERENCE TIES FROM 2006 AND FOUND A 1/4" REROD. THE FOUND REROD IS ACCEPTED AS MARKING THE LOCATION OF THE E1/4 CORNER OF SEC. 29, TWP. 137 N., RGE. 29 W.