

CERTIFICATE OF LOCATION OF GOVERNMENT CORNER

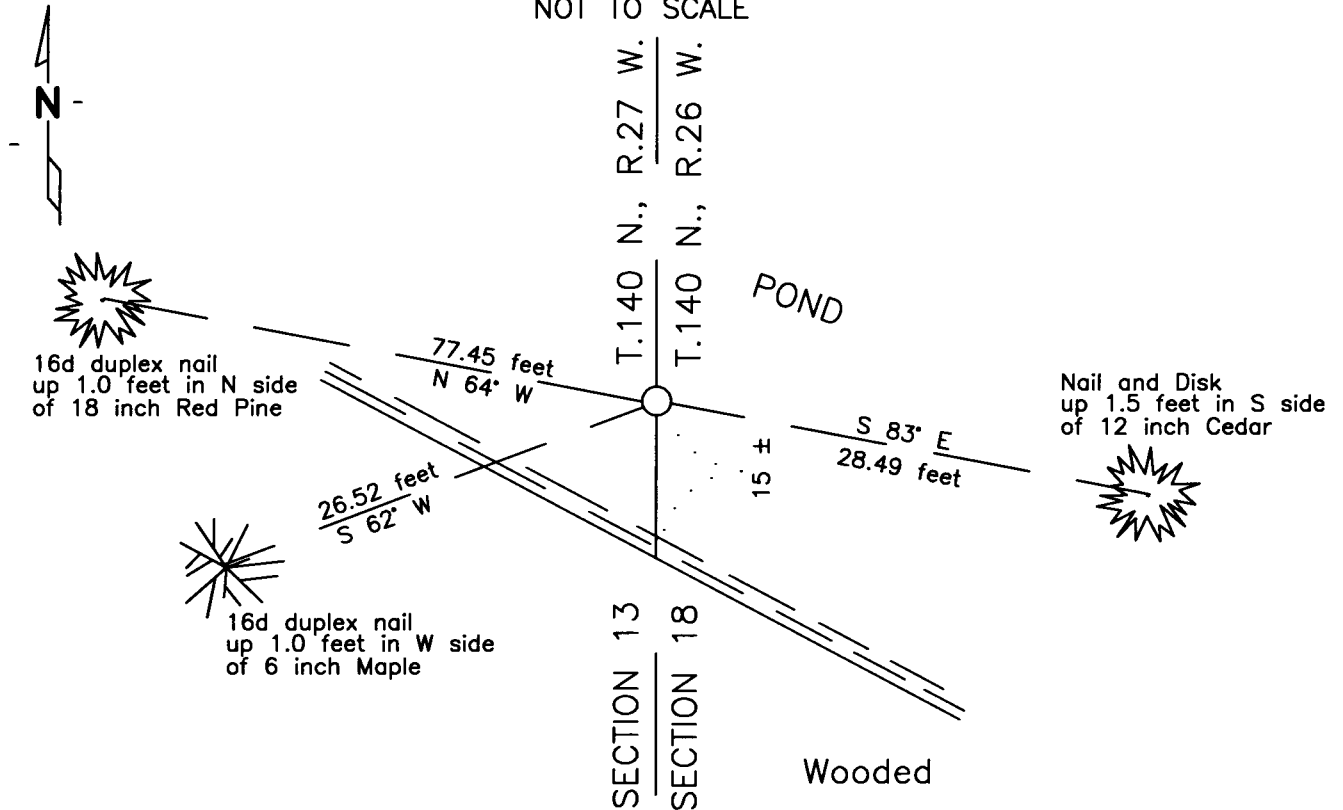
East Quarter Corner of Section 13, Township 140 N., Range 27 W., 5th P.M.

STATE OF MINNESOTA, County of CASS

At the corner location shown on the sketch:

- On 11/27/12 found a Cast Iron Monument, in pond
- left monument as found, lowered monument, removed monument (explain)
- On _____ DATE _____

SKETCH OF REFERENCE TIES NOT TO SCALE



NAD83 (1996 ADJUSTMENT)
CASS COUNTY NORTH DATUM

N= 150,094.729
E= 546,666.689

Statement of evidence relative to
this corner is on back of page

I hereby certify that this document and the
data contained herein was prepared by me or
under my direct supervision.

Craig E. Johnson 12/12/12
DATE

Registration No. 44530

- Land surveyor,
- County Surveyor,



A000589947

OFFICE OF THE COUNTY RECORDER
CASS COUNTY, MINNESOTA
CERTIFIED, FILED, AND/OR
RECORDED ON

2/26/2013 8:25:14 AM

AS DOC #: A000589947

PAGES: 2

REC FEES: 0.00

KATHRYN M. NORBY
CASS COUNTY RECORDER

BY SR _____ Dep

Statement of Evidence:

L-25, East Quarter corner of Section 13, Township 140 North, Range 27 West, 5th Principal Meridian.

- Aug. 1863 Johnson and Thornton, General Land Office (GLO) Deputy Surveyors set a post for the original corner and referenced it as follows:
5" Cedar N 49 E 25 links (16.5 feet) 8" W.Birch N 86 W 14 links (9.2 feet)
- ??? 1937 Civilian Conservation Corps (CCC), personnel, notes on file in the Minnesota Department of Natural Resources (DNR), Outing Office, Washburn Lake Book 6, page 28, states at 2640' from South set approx. cor.
- Oct. 1980 G. Stevenson, LS 12684, Certificate of Survey, on file in the Landecker and Assoc., Walker office and a copy on file in the CCSO, indicates County Cast Iron Mon. set. This position is shown to be midway and on line between the Northwest and Southwest corners of Section 18, Township 140 North, Range 26 West.
- July 2001 B.Hippen and T.Booge, technicians, CCSO, notes on file in the CCSO, found Cast Iron Monument, in pond, 15'+, - North of Southerly shore. The monument, and set references ties for the position
- Nov. 2012 G. Duerr found a cast iron monument in pond, Bolton & Menk accepted the found cast iron monument as the corner and verified reference ties set by CCSO in 2001, as depicted on the face of this certificate.