

# CERTIFICATE OF LOCATION OF GOVERNMENT CORNER

North Quarter Corner of Section 13, Township 140 N., Range 27 W., 5th P.M.

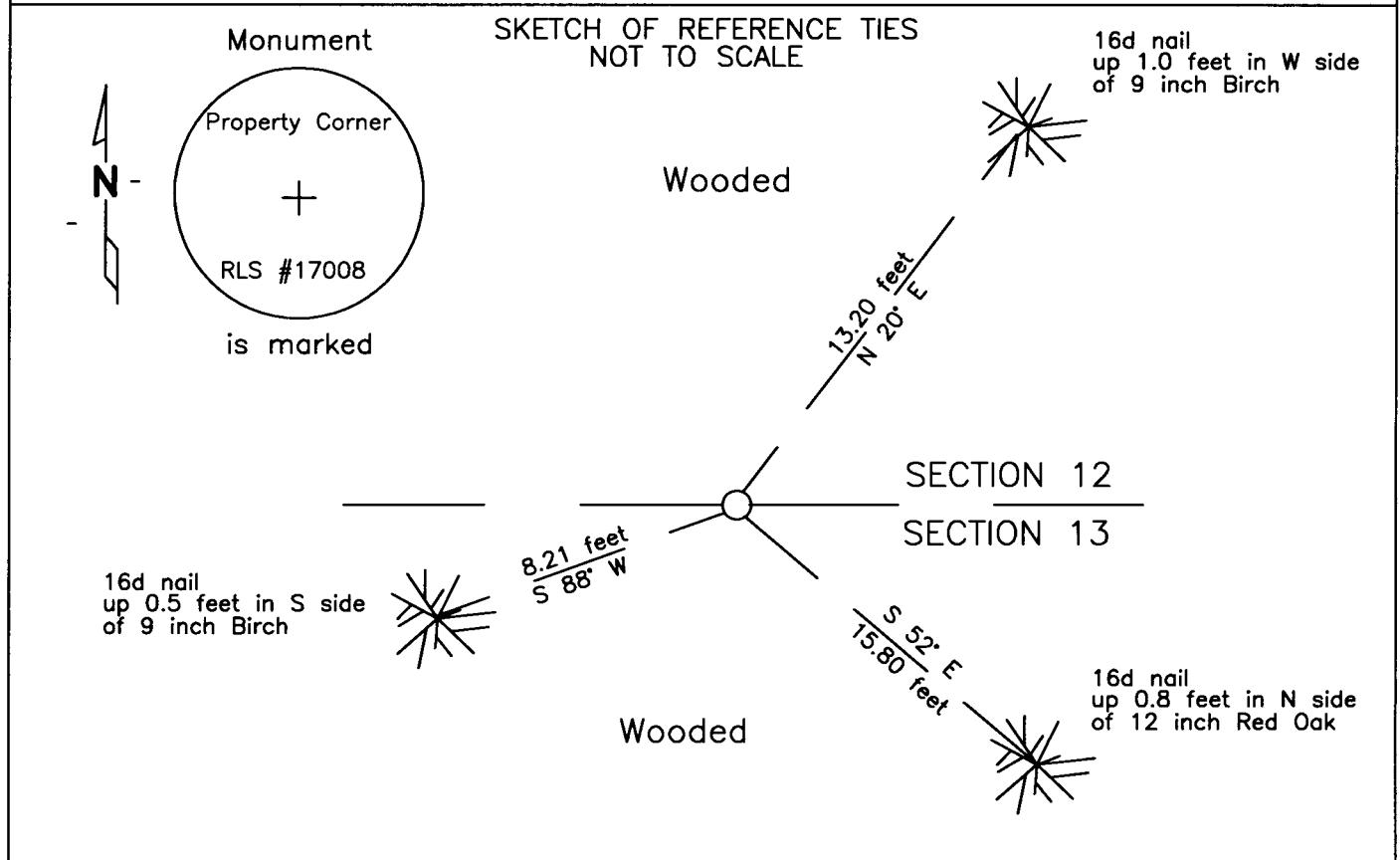
STATE OF MINNESOTA, County of CASS

At the corner location shown on the sketch:

On 11/27/12 found a 1/2" ID pipe with cap, RLS #17008, flush in ground

left monument as found,  lowered monument,  removed monument (explain)

On \_\_\_\_\_ DATE \_\_\_\_\_



NAD83 (1996 ADJUSTMENT)  
CASS COUNTY NORTH DATUM

N= 152,812.874  
E= 544,250.691

Statement of evidence relative to  
this corner is on back of page

I hereby certify that this document and the  
data contained herein was prepared by me or  
under my direct supervision.

*Craig E. Johnson* 12/12/12  
\_\_\_\_\_  
Craig E. Johnson DATE

Registration No. 44530

- Land surveyor,
- County Surveyor,



A000589945

OFFICE OF THE COUNTY RECORDER  
CASS COUNTY, MINNESOTA  
CERTIFIED, FILED, AND/OR  
RECORDED ON

2/26/2013 8:25:12 AM

AS DOC #: A000589945

PAGES: 2

REC FEES: 0.00

KATHRYN M. NORBY  
CASS COUNTY RECORDER

BY SR \_\_\_\_\_ Dep

Page 1 of 2 A000589945

Statement of Evidence:

J-23, North Quarter corner of Section 13, Township 140 North, Range 27 West, 5th Principal Meridian.

- Nov. 1873 F.G. Winston, General Land Office (GLO) Deputy Surveyors set a post for the original corner and referenced it as follows:  
24" N.Pine S 57°45' E 36 links (23.8 feet)      20" N.Pine N 57°20' E 50 links (33.0 feet)
- ???. 19?? D. Landecker, LS 17008, Certificate of Survey, copy on file in the CCSO, indicates iron pipe monument in place.
- June 2001 B.Hippen and E.Shelly, technicians, CCSO, notes on file in the CCSO, found 7/8" ODIP, capped RLS #17008, flush, in woods. The monument, recovered and established references.
- Nov. 2012 G. Duerr found a 1/2" ID pipe capped 17880 Bolton & Menk accepted the found pipe as the corner and verified reference ties set by CCSO in 2001, as depicted on the face of this certificate.

