



A000583980

OFFICE OF THE COUNTY RECORDER  
CASS COUNTY, MINNESOTA  
CERTIFIED, FILED, AND/OR  
RECORDED ON

9/10/2012 9:36:54 AM

AS DOC #: A000583980

PAGES: 3

REC FEES: 0.00

KATHRYN M. NORBY  
CASS COUNTY RECORDER

BY SR Dep

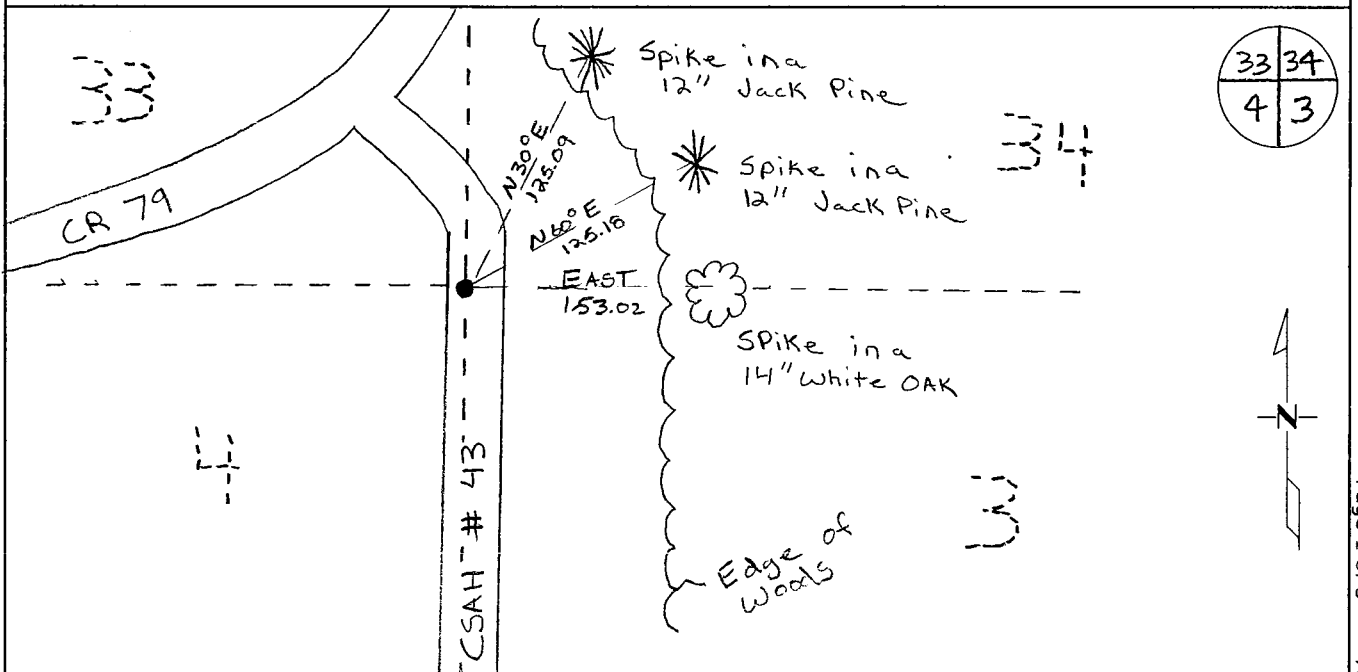
Index Number A.0-13.0

# CERTIFICATE OF LOCATION OF GOVERNMENT CORNER

North east Corner of Section 4, Township 138 N, Range 29 W  
5TH Principal Meridian, State of Minnesota, County of Cass

At the corner location shown on the sketch:

- On 1-12-11 found a Crow Wing County Cast Iron Monument Down 0.7' 3' west of E
- left monument as found       lowered monument       removed monument (explain)
- On \_\_\_\_\_ placed an \_\_\_\_\_



Statement of evidence for this corner location is on back of this page.

I hereby certify that this document was researched and prepared by me or under my direct supervision and that I am a licensed Land Surveyor under the laws of the State of Minnesota.

Signature \_\_\_\_\_

Chris Hoglund, PS  
License No. 43932

Date: 7/19/12





**Statement of Evidence:**

Northeast Corner of Section 4, Township 138 North, Range 29 West, Barclay Township, 5<sup>th</sup> Principal Meridian, Cass County, Minnesota.

1865 Original US General Land Office survey by T.B. Walker, set a wood post and bearing trees noted as:

12" Norway Pine	N 40° E	132 links
14" Norway Pine	N 73° W	126 links
14" Norway Pine	S 70 ½° W	66 links

1910 A.W. Moulster found old Gov't B.T.s: 14" Norway Pine stump S72°17'W 66 links, 14" Norway Pine stump N73°35'W 126 links, Norway Pine stump N40°24'E 132 links and filed in County Survey Record Book "B" Page 1-3, Survey record No. 238. Reference ties:

8" Jack Pine	S 73° W	120 feet
12" Jack Pine	S 75°30' E	112 feet

1910 A.W. Moulster set corner from original bearing trees, filed in Misc. Book 5, Page 10.

1910 A.W. Moulster Twp rd order shows survey, filed in the office of the Cass County Recorder.

1911 A.W. Moulster Twp rd order indicates corner, filed in the office of the Cass County Recorder.

1918 Curo Book 202, Page 24 – New B.T.s:

12" Jack Pine	N 30°10' E	140.40 feet
6" Jack Pine	N 71°45' W	90.40 feet
6" Jack Pine	S 72°52' W	120.45 feet
12" Jack Pine	S 75°31' E	111.85 feet

1919 E.B. Horst found corner and filed in County Book "C" Page 350, Survey Record No. 436.

1927 John Curo found iron Monument, filed in Curo Book 156, Page 21

1929 John Curo found 2"x48" pipe, filed in Curo Book 222, pages 5,7 and 12

1936 John Curo found 2"x48" pipe, filed in Curo Book 419, Page 27.

1940 John Curo Set 120d spike from 1918 ties, filed in Curo Book 248, page 43.

1948 Harold Curo found spike set previously and filed in County Book "D" Page 339, Survey Record No. 616. Reference ties:

12" Jack Pine Stump (spike)	N 47°23' E	66.40 feet
12" Jack Pine Stump	S 68°25' E	111.85 feet
10" Jack Pine	S 13°10' W	47.70 feet
15" White Pine	N 49°45' W	60.45 feet

1968 R.F. Schneider found 2" capped pipe in place from old ties (below) and filed Survey for DNR (map in file).

6" Jack Pine	N 75° E	73.49 feet
12" Jack Pine	S 12° W	47.85 feet
7" Jack Pine	S 23° W	41.15 feet
18" Norway Pine	N 50° W	59.95 feet

1970 Don Coulter, LS 5852, Found a 2" capped pipe in place, on file at Crow Wing County Surveyor's Office. Reference ties:

18" Norway Pine	N 49°45' W	59.8 feet
-----------------	------------	-----------



10" Jack Pine	N 45° 10' E	74.85 feet
8" Jack Pine	N 75° 35' E	73.35 feet
10" Jack Pine	S 22° 40' W	41.25 feet

1979 Crow Wing County Highway Dept. found 2" I.P. in place w/cap 3.3' east of centerline Co. Rd. #118.  
 Reference ties:

20" Norway Pine	Northwest	60.7 feet
8" Jack Pine	Northeast	68.60 feet
12" Jack Pine	Southwest	86.9 feet

1984 Metcalf found monument in place, filed in Curo Book 311, Page 78

1993 Anthony Kerick (Crow Wing County Surveyor), Registered Land Surveyor Number 12266, tied into the corner prior to road construction and placed a 1/2" rod and spike in the ground after construction.

1995 Anthony Kerick (Crow Wing County Surveyor), Registered Land Surveyor Number 12266, found 1/2" rod and large spike, set cast iron monument, and filed Crow Wing County Corner Certificate No. 477942, dated February 22, 1995. Reference ties:

8" Jack Pine	N 30° E	125.09 feet
8" Jack Pine	N 60° E	125.18 feet
8" Burr Oak	East	153.02 feet

1999 Landecker & Associates – Certificate of Survey indicates iron monument found.

2003 M. Landecker, Registered Land Surveyor Number 7452, Certificate of Survey shows monument found.

2005 J. Kramer, Registered Land Surveyor Number 23668, Certificate of Survey shows iron monument found.

2006 Don Sigety, Crow Wing County Surveyor , Shows Cast Iron Monument found.  
 Coordinate as follows from Crow Wing County 1986 adjustment  
 N: 336716.002 E: 531047.88

2011 Westwood Professional Services, Inc. found a Cast Iron Monument set by Kerick in 1995. Accepted monument as marking corner from 1993, assumed to be the 2" iron pipe noted by John Curo in 1929, which is a perpetuation of Moustier's 1910 perpetuation of the original GLO corner monument. Located monument with a 20 minute static GPS shot and verified coordinates with VRS GPS observation. Analysis of the recovered data, field evidence and survey measurements, indicates that the monument found by Westwood Professional Services, Inc is the accepted position for this corner.

Cass County Coordinates South Zone obtained by static GPS (NAD 83, 1996 Adj)  
 N: 336716.54  
 E: 531047.14

Central State Plane Coordinate  
 N: 986436.64  
 E: 2601452.45