



A000583971

OFFICE OF THE COUNTY RECORDER
CASS COUNTY, MINNESOTA
CERTIFIED, FILED, AND/OR
RECORDED ON

9/10/2012 9:09:10 AM

AS DOC #: A000583971

PAGES: 2

REC FEES: 0.00

KATHRYN M. NORBY
CASS COUNTY RECORDER

BY SR _____ Dep

Index Number A.0-25.0

CERTIFICATE OF LOCATION OF GOVERNMENT CORNER

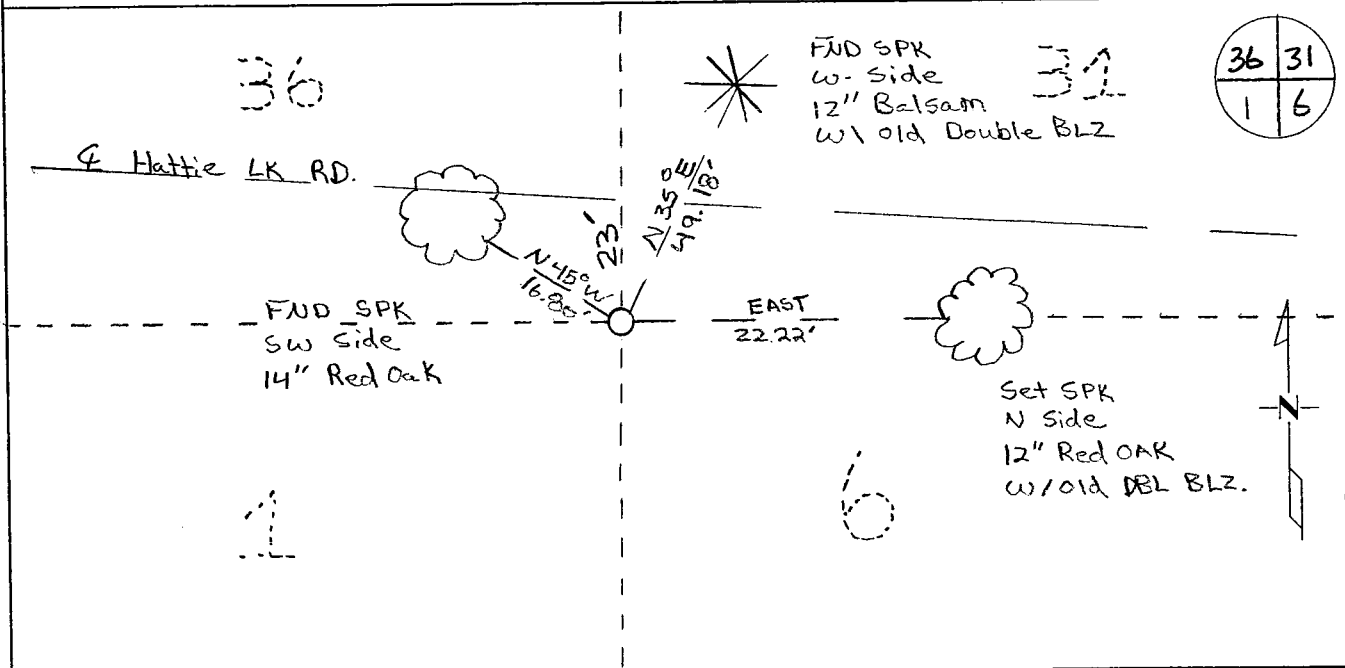
Northeast Corner of Section 1, Township 138, Range 30
5TH Principal Meridian, State of Minnesota, County of Cass

At the corner location shown on the sketch:

On 4/2011 found a 2 inch IP with plumbers cap.

left monument as found lowered monument removed monument (explain)

On 4/2011 placed on 3.5" Brass Capped monument. Stamped CASS CTY RLS 43932. In same location as plumbers cap.



Statement of evidence for this corner location is on back of this page.

I hereby certify that this document was researched and prepared by me or under my direct supervision and that I am a licensed Land Surveyor under the laws of the State of Minnesota.

Signature *Chris Høglund*
Chris Høglund, PS
License No. 43932

Date: 7/19/12





Statement of Evidence:

Northeast Corner of Section 1, Township 138 North, Range 30 West, Pine River Township, 5th Principal Meridian, Cass County, Minnesota.

1865 Original US General Land Office survey by Wright and Walker, set a wood post and bearing trees noted as:

8" Black Pine	N 21° E	54 links
8" Black Pine	N 40 1/2° W	35 links
5" Black Pine	S 47° W	24 links
8" Black Pine	S 48° E	32 links

1908 John Curo set corner from original bearing trees filed in Curo Book 95, page 69

1910 A.W. Moulster found stake set by Curo and filed in County Survey Record Book "B" Page 1-3, Survey Record No. 238, also in Misc. Book 5, page 5.

1913 M.A. Kemp found Old Gov't B.T.s: 5" Black Pine S47°W 24 links, 8" Black Pine N21°E 54 links. Set 3x3x30" oak stake and filed in Book "B" Page 301-304, Survey Record No. 299.

1915 H. F. Baldwin found post set by Kemp – removed oak corner post and replaced with 2"x48" iron pipe with cap, Book "B" Page 354-360, Survey Record No. 311.

1982 Cass County Survey Technicians Freeman & D. Marcum found 2" I.P. w/cap set by Baldwin.

2000 Cass County Surveyors Office found in place: 2" ODIP w/plumbers cap 30 +/- south of centerline road. Reference ties:

8" Balsam	N 38° E	49.18 feet (exist B.T.)
6" Ash	S 38° W	5.23 feet (exist B.T.)
6" White Oak	N 85° W	32.67 feet
10" Red Oak	N 32° W	16.78 feet
I.P.	North	75.30 feet

2003 County Surveyors Office found 2 1/4" ODIP w/plumber cap, up 0.5', 23' +/- south of drive and located it with GPS. Coordinates as follows from Cass County South 1996 adjustment:
N: 336851.664 E: 514880.546

2011 Westwood Professional Services, Inc. found 1915 Baldwin 2" Iron Pipe with Plumbers cap set from GLO bearing trees. Westwood also found two 2000 Cass County reference ties. A 5/8"x24" rebar with a 3.5" Brass Cap was set and located with VRS GPS observation. Buried the found pipe next to the set monument. Analysis of the recovered data, field evidence and survey measurements, indicates that the monument found by Westwood Professional Services, Inc is the correct perpetuation of this corner.

Cass County Coordinates South Zone obtained by VRS GPS (NAD 83, 1996 Adj)
N: 336851.13
E: 514880.47

Central State Plane Coordinate
N: 986615.48
E: 2585288.0