



A000583968

OFFICE OF THE COUNTY RECORDER
CASS COUNTY, MINNESOTA
CERTIFIED, FILED, AND/OR
RECORDED ON

9/10/2012 9:09:07 AM

AS DOC #: A000583968

PAGES: 2

REC FEES: 0.00

KATHRYN M. NORBY
CASS COUNTY RECORDER

BY SR _____ Dep

Index Number A.0-1.0

CERTIFICATE OF LOCATION OF GOVERNMENT CORNER

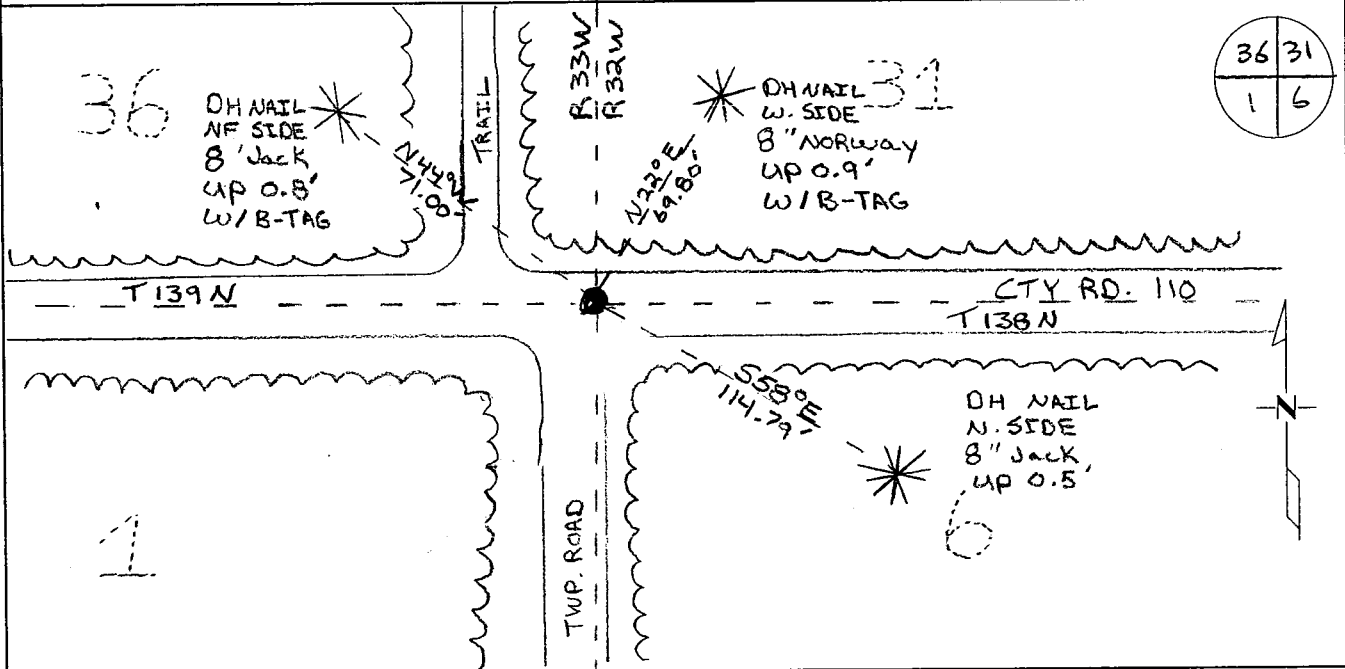
North west Corner of Section 6, Township 138, Range 32
5TH Principal Meridian, State of Minnesota, County of Cass

At the corner location shown on the sketch:

On 5-2011 found a CAST IRON MONUMENT

left monument as found lowered monument removed monument (explain)

On _____ placed an _____



Statement of evidence for this corner location is on back of this page.

I hereby certify that this document was researched and prepared by me or under my direct supervision and that I am a licensed Land Surveyor under the laws of the State of Minnesota.

Signature Chris Hoglund
Chris Hoglund, PS
License No. 43932

Date: 7/19/12





Statement of Evidence:

Northwest Corner of Section 6, Township 138 North, Range 32 West, McKinley Township, 5th Principal Meridian, Cass County, Minnesota.

1860 Original US General Land Office survey set a wood post and bearing trees noted as:

6" Black Pine	N 63° W	347 links
5" Black Pine	S 40° W	325 links
12" Black Pine	S 79° E	235 links
20" Norway Pine	N 82 ½° E	289 links

1908 John Curo found Old Gov't B.T. 12" Jack Pine SE. Set 4x4x40" wood post and filed in County Survey Record Book "A" Page 418-424, Survey Record No. 182.

1912 John Curo replaced wood post with an 8x8x36" concrete post, Survey Record Book "A" Page 418-424, Survey Record No. 182.

1978 Hubbard County Survey Department excavated corner and found an 8"x8"x36" Concrete Monument, entry derived from document No. 264917.

1995 Hubbard County Survey Department returned to this corner and set a 4" Cast Iron Monument over the top of the Concrete Monument found in 1978. They filed a Certificate of Location, recorded as document #264917 and recorded the following reference ties:

5" Jack Pine	N 44° W	71.00 feet
5" Red Pine	N 22° E	69.80 feet
5" Jack Pine	S 58° E	114.79 feet
Power Pole	S 37° W	72.12 feet

2000 Cass County Surveyors Office found CIM down 0.6' centerline C.R. 110, 7' east centerline C.R. 111, and 16' east of trail. Found 3 B.T.s w/tags (1995). Reference ties:

6" Jack Pine	N 44° W	71.00 feet
6" Red Pine	N 22° E	69.80 feet
6" Jack Pine	S 58° E	114.79 feet
Power Pole	S 34° W	70.95 feet

No Date Coordinates as follows from Cass County South 1996 adjustment:
N: 336337.156 E: 419749.729

2011 Westwood Professional Services, Inc. found a Cast Iron Monument in place and all 4 2000 Cass County Reference ties. Cast iron monument is accepted as marking the obliterated corner position being a perpetuation of Curo's 1908 position determined from found GLO bearing trees. Located found monument with a 20 minute Static GPS shot and verified coordinates with VRS GPS observation. Analysis of the recovered data, field evidence and survey measurements, indicates that the monument set by Westwood Professional Services, Inc is the correct location for this corner.

Cass County Coordinates South Zone obtained by VRS GPS (NAD 83, 1996 Adj)
N: 336337.05
E: 419749.71

Central State Plane Coordinate
N: 986361.24
E: 2490167.14