



A000583965

OFFICE OF THE COUNTY RECORDER  
CASS COUNTY, MINNESOTA  
CERTIFIED, FILED, AND/OR  
RECORDED ON

9/10/2012 9:09:04 AM

AS DOC #: A000583965

PAGES: 2

REC FEES: 0.00

KATHRYN M. NORBY  
CASS COUNTY RECORDER

BY SR Dep

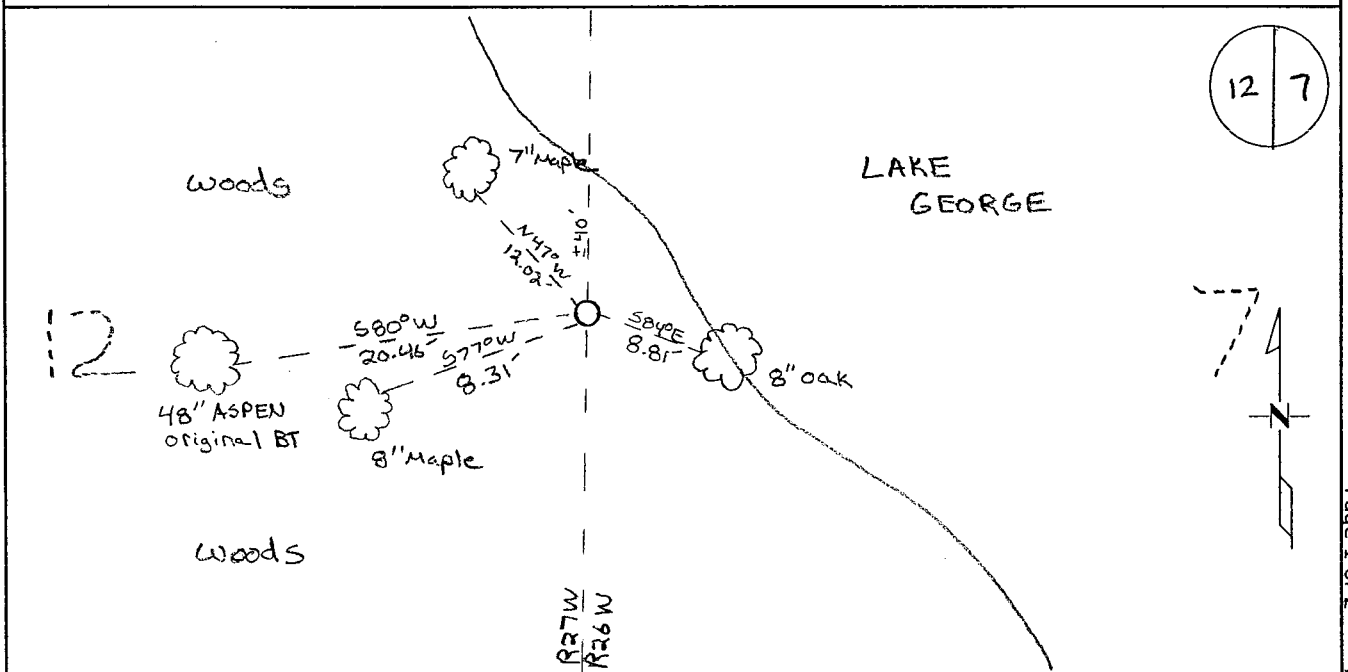
Index Number E.9-25.0

### CERTIFICATE OF LOCATION OF GOVERNMENT CORNER

MC # 3 ON EAST LINE Corner of Section 12, Township 139, Range 27  
5TH Principal Meridian, State of Minnesota, County of Cass

At the corner location shown on the sketch:

- On 6-2011 found remains of old wood stake
- left monument as found       lowered monument       removed monument (explain)
- On 6-2011 placed an 1/2" Iron pipe with RLS cap  
43932.



Statement of evidence for this corner location is on back of this page.

I hereby certify that this document was researched and prepared by me or under my direct supervision and that I am a licensed Land Surveyor under the laws of the State of Minnesota.

Signature *Chris Hoglund*  
Chris Hoglund, PS  
License No. 43932

Date: 7/19/12

Page 1 of 2  
A000583965





**Statement of Evidence:**

Meander Corner #3 on the East line of Section 12, Township 139 North, Range 27 West, Trelipe Township, 5<sup>th</sup> Principal Meridian, Cass County, Minnesota.

1863 Original US General Land Office survey by Johnson and Thornton, set a wood post and bearing trees noted as:

10" White Pine	S 40° E	110 links
10" Aspen	S 80° W	31 links

1937 CCC found monument at 19.52 chains south of corner in lake set stake for approximate M.C. and filed in Washburn Lake Book 7 Page 37.

2011 Westwood Professional Services, Inc. searched the area for the corner and accessories and found a 48" Aspen tree with a scar. Searched at 1863 G.L.O. bearing and distance from the Aspen tree and found remains of old wood post, including the charred point. Also found possible remains of 1863 10" white pine, which measured 2+/- feet long of the 1863 distance. Accepted found stake as being the corner set by Johnson and Thornton in 1863. Set a 1/2"x14" pipe capped L.S. 43932 at the point of old stake. Located set monument with a VRS GPS observation. Analysis of the record data and field evidence indicates that the monument set by Westwood Professional Services in 2011 is a correct perpetuation of Meander Corner #3.

Cass County Coordinates North Zone obtained by VRS GPS (NAD 83, 1996 Adj)

N: 125042.60

E: 546909.33

Central State Plane Coordinate

N: 1010847.75

E: 2679908.18