



A000583957

OFFICE OF THE COUNTY RECORDER  
CASS COUNTY, MINNESOTA  
CERTIFIED, FILED, AND/OR  
RECORDED ON

9/10/2012 9:08:56 AM

AS DOC #: A000583957

PAGES: 2

REC FEES: 0.00

KATHRYN M. NORBY  
CASS COUNTY RECORDER

BY SR \_\_\_\_\_ Dep

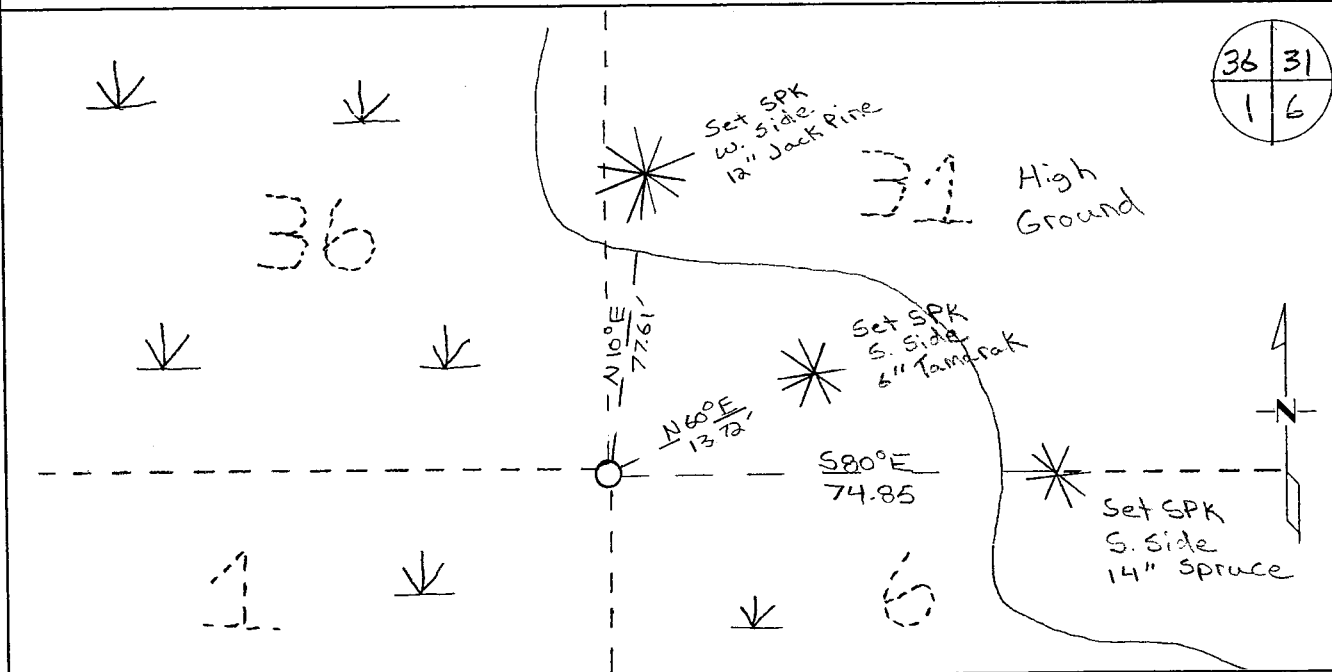
Index Number A.O-25.0

# CERTIFICATE OF LOCATION OF GOVERNMENT CORNER

North east Corner of Section 1, Township 139, Range 31  
5TH Principal Meridian, State of Minnesota, County of Cass

At the corner location shown on the sketch:

- On \_\_\_\_\_ found a \_\_\_\_\_
- left monument as found       lowered monument       removed monument (explain)
- On 4/2011 placed on 3.5" Brass capped monument.  
Stamped CASS CTY RLS 43932.



Statement of evidence for this corner location is on back of this page.

I hereby certify that this document was researched and prepared by me or under my direct supervision and that I am a licensed Land Surveyor under the laws of the State of Minnesota.

Signature [Handwritten Signature]  
Cris Hognlund, PS  
License No. 43932

Date: 7/19/12





**Statement of Evidence:**

Northeast Corner of Section 1, Township 139 North, Range 31 West, Deerfield Township, 5<sup>th</sup> Principal Meridian, Cass County, Minnesota.

1865 Original US General Land Office survey by Wright and Walker, set a wood post and bearing trees noted as:

10" Black Pine	N 70° E	147 links
12" Norway Pine	N 13° W	110 links
9" Black Pine	S 88° E	119 links
6" Tamarack	S 44° W	80 links

2009 Cass County Surveyors Office – initial search found some old stumps in area, no proven evidence was located.

2011 Westwood Professional Services, Inc. did an extensive search in the area and found no evidence of the original post or its accessories. Searched for corners and accessories, in all four cardinal directions. Computed a double proportion position based on a found 2" iron pipe with a plumbers cap set by Horst in 1920 from original bearing tree stumps at the Northeast Corner of Section 4, Township 139, Range 31 to a 2" iron pipe set by John Curo in 1913 from original bearing tree stumps at the Northeast Corner of Section 6, Township 139, Range 30, these two points were used for an east-west direction. For a north-south direction a 2" iron pipe was found at the Northeast Corner of Section 36, Township 140, Range 31, set by Horst in 1921 and an aluminum capped monument set by Robert Kovanen, Cass County Surveyor from an original bearing tree stump at the East Quarter Corner of Section 1, Township 139, Range 31. Set a 5/8x24" Rebar with a 3.5" Brass Cap and located set monument with a 20 minute static GPS shot and verified coordinates with VRS GPS observation. Analysis of the recovered data, field evidence and survey measurements, indicates that the monument set by Westwood Professional Services, Inc is the accepted position for this corner.

Cass County Coordinates North Zone obtained by static GPS (NAD 83, 1996 Adj)

N: 132685.08

E: 420831.83

Central State Plane Coordinate

N: 1082648.89

E: 3451264.79