



A000583952

OFFICE OF THE COUNTY RECORDER
CASS COUNTY, MINNESOTA
CERTIFIED, FILED, AND/OR
RECORDED ON

9/10/2012 9:08:51 AM

AS DOC #: A000583952

PAGES: 2

REC FEES: 0.00

KATHRYN M. NORBY
CASS COUNTY RECORDER

BY SR Dep

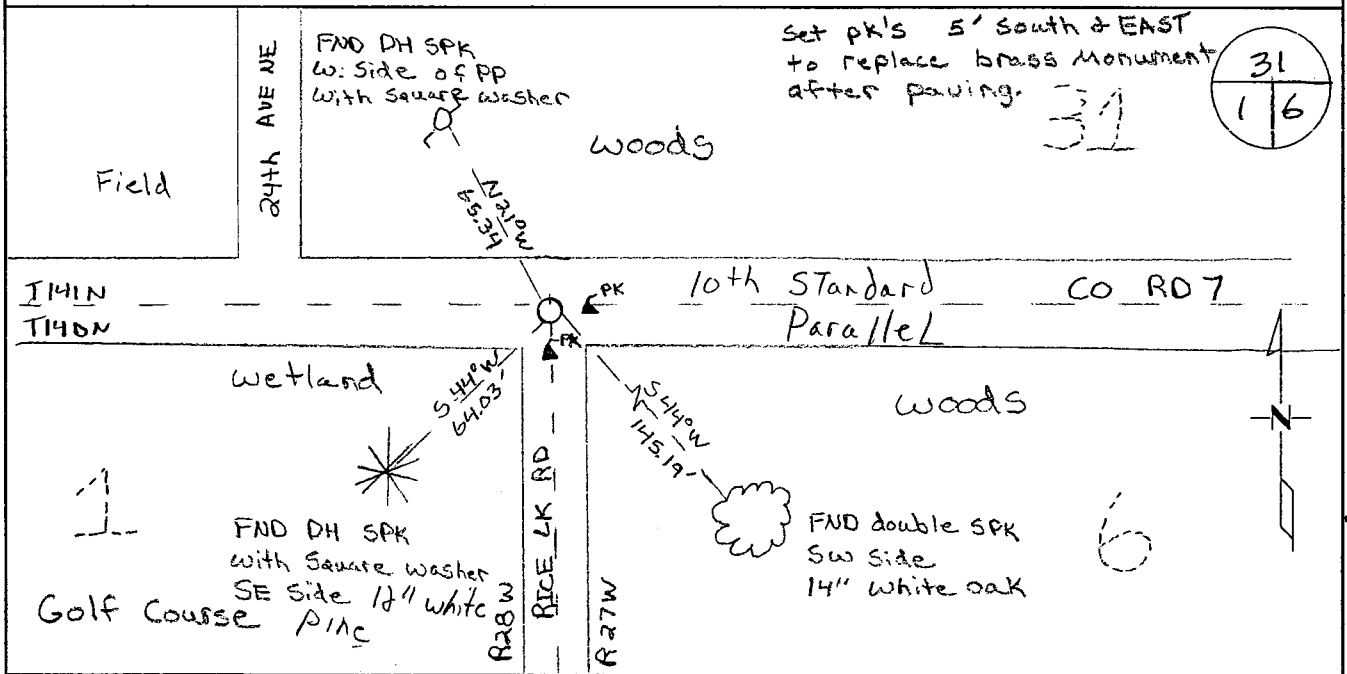
Index Number A.0-250

CERTIFICATE OF LOCATION OF GOVERNMENT CORNER

NORTH EAST CLOSING Corner of Section 1, Township 140, Range 28
5TH Principal Meridian, State of Minnesota, County of Cass

At the corner location shown on the sketch:

- On 6-23-11 found a pk. Excavated area with a back hoe and found nothing.
- left monument as found lowered monument removed monument (explain)
- On 6-23-11 placed an 3.5" brass capped monument
Stamped Cass Cty RLS 43932 in same location as PK



Statement of evidence for this corner location is on back of this page.

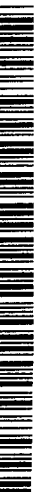
I hereby certify that this document was researched and prepared by me or under my direct supervision and that I am a licensed Land Surveyor under the laws of the State of Minnesota.

Signature

Chris Hoglund
Chris Hoglund, PS
License No. 43932

Date:

7/19/12





Statement of Evidence:

Northeast Closing Corner of Section 1, Township 140 North, Range 28 West, Wabedo Township, 5th Principal Meridian, Cass County, Minnesota.

- 1863 Original US General Land Office survey by Johnson and Thronton, set a wood post and bearing trees noted as:
 14" White Pine S 30° E 20 links
 4" Spruce S 76° W 140 links

- 1910 A.W. Moulster found stake in place and White Pine Bearing Tree plainly marked, filed in Curo Book 69, Page 180.

- 1912 A.W. Moulster found old Gov't B.T.: 14" White Pine S30°W 20 links and also found old stake. Set another stake 2.10' south for true closing corner and filed in County Survey Record Book "A" Page 519, Survey Record # 212.

- 1913 Kemp found monument in place, filed in Curo Book 37A, Page 34

- 1917 Ditch Book 5, Page 10, mentioned corner, no description of any monument, filed in the office of the Cass County Surveyor.

- 1920 Ben Clark found point of old stake and Gov't B.T. 14" White Pine S30°W (down). Set 3x30" iron post and filed in County Book "D" Page 185, Survey Record # 548, also filed in Curo Book 170A, Page 83.

- 1937 CCC found approximate corner in center of roads E, W & S and filed in Washburn Lake Book 5 Page 55.

- 2000 Cass County Surveyors Office found in place: 1" ODIP centerline CSAH 7 and 2.5' west centerline north Rice Lake Road NE. Reference ties:
 Power Pole N 21° W 65.34 feet
 Sign Post N 62° E 44.87 feet
 11" White Oak S 49° E 145.19 feet
 10" White Pine S 44° W 64.03 feet

- 2002 County Surveyors Office found 1" ODIP, flush, on centerline-centerline and located it with GPS. Coordinates as follows from Cass County North 1996 adjustment:
 N: 163423.425 E: 515749.379

- 2003 Roger Mustonen, LS 11946 Certificate of Survey shows iron pipe monument found at the Northeast Corner of Section 1, Township 140, Range 28, filed in the office of the Cass County Surveyor.

- 2008 Bruce W. Skipton, LS 17768 Certificate of Survey shows shows found p.k. nail at Northeast Corner of Section 1 ,Township 140, Range 28, filed in the office of the Cass County Surveyor.

- 2011 Westwood professional Services, Inc. along with Cass County Highway department excavated an 8x12 foot hole searching for corner evidence. Found a p.k. nail and two spikes set directly under the found p.k. nail, which is in the same location as the 1" iron pipe found by CCSO in 2000 and 2002. No other evidence was recovered. Set 5/8"x24" rebar with 3.5" brass flush with the bituminous in the same location as the found monument. Located set monument with a VRS GPS observation. Analysis of the recovered data, field evidence and survey measurements, indicates that the monument found by Westwood Professional Services, Inc is the accepted position for this corner.

Cass County Coordinates North Zone obtained by static GPS (NAD 83, 1996 Adj)

N: 163423.40
E: 515749.35

Central State Plane Coordinate:

N: 1049212.54
E: 2648735.70