



A000583947

OFFICE OF THE COUNTY RECORDER  
CASS COUNTY, MINNESOTA  
CERTIFIED, FILED, AND/OR  
RECORDED ON

9/10/2012 9:08:46 AM

AS DOC #: A000583947

PAGES: 2

REC FEES: 0.00

KATHRYN M. NORBY  
CASS COUNTY RECORDER

BY SR \_\_\_\_\_ Dep

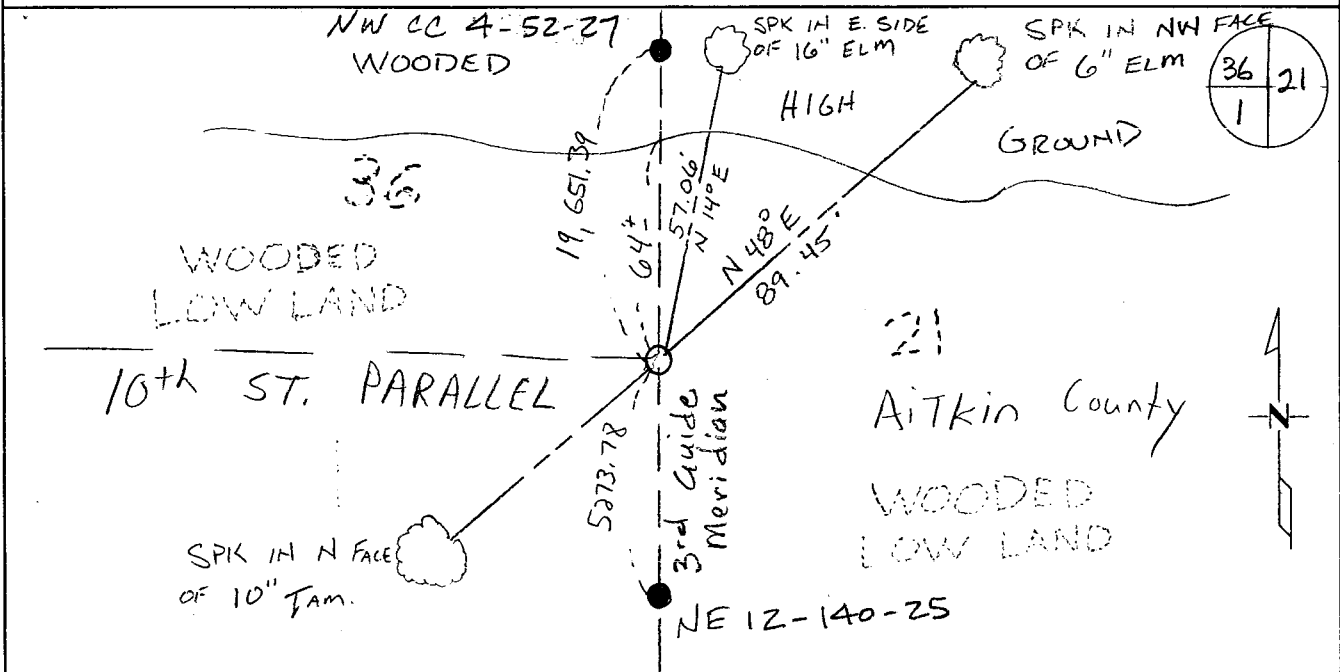
Index Number 2.0-25.0

### CERTIFICATE OF LOCATION OF GOVERNMENT CORNER

Southeast Standard Corner of Section 36, Township 141, Range 25  
5TH Principal Meridian, State of Minnesota, County of Cass

At the corner location shown on the sketch:

- On \_\_\_\_\_ found a \_\_\_\_\_
- left monument as found       lowered monument       removed monument (explain)
- On 7-26-11 placed an 24" REBAR WITH 3.5" BRASS CAP LS 43932



Statement of evidence for this corner location is on back of this page.

I hereby certify that this document was researched and prepared by me or under my direct supervision and that I am a licensed Land Surveyor under the laws of the State of Minnesota.

Signature Chris Hoglund  
Chris Hoglund, PS  
License No. 43932

Date: 7/19/12

Page 1 of 2  
A000583947





**Statement of Evidence:**

Southeast Standard Corner of Section 36, Township 141 North, Range 25 West, Lima Township, 5<sup>th</sup> Principal Meridian, Cass County, Minnesota.

- 1864 Original US General Land Office survey by Johnson and Thornton, set a wood post and bearing trees noted as:
 

12" Tamarack	N 12° W	46 links
8" Tamarack	S 57° W	31 links
  
- 1935 MN/DOT R/W map indicates distance of 1579.1 feet south of centerline Trunk Highway No. 200 to this corner.
  
- 1937 CCC set approximate corner at 5280 from west and filed in Washburn Lake Book 5 Page 2.
  
- 2004 County Surveyors Office initial search made 1579.1 south of centerline of Trunk Highway No. 200, not in swamp, search in swamp found no evidence, filed in the office of the Cass County Surveyor.
  
- 2011 Westwood Professional Services, Inc. searched the area thoroughly for the corner and any accessories. After finding nothing, searched exhaustively at all closing and standard corners north and south of the subject corner for any supporting evidence. Set corner based on a proportioned distance between the Northwest Closing Corner of Section 4, Township 52, Range 27 4<sup>th</sup> Principal Meridian, and the northeast Corner of Section 12, Township 140, Range 25 5<sup>th</sup> Principal Meridian. Distance from subject corner north fits the 1 chain GLO call to edge of wetland within 2 feet. Set a 5/8"x24" rebar with 3.5" Brass Cap and located with a VRS GPS observation. Contacted the Itasca County Survey Department, Minnesota Department of Natural Resources, Terry Betley Land Surveying, Cass County Survey Department, Aitkin County Land Survey Department, Northern Lights Land Surveying, but no additional survey information was found. Analysis of the recovered data, field evidence and survey measurements, indicates that the monument set by Westwood Professional Services, Inc is the best available evidence of the corner position.

Cass County Coordinates North Zone obtained by VRS GPS (NAD 83, 1996 Adj)  
 N: 163309.23  
 E: 310219.87

Central State Plane Coordinate  
 N: 1049000.19  
 E: 2443222.66