



A000583924

OFFICE OF THE COUNTY RECORDER
CASS COUNTY, MINNESOTA
CERTIFIED, FILED, AND/OR
RECORDED ON

9/7/2012 3:03:07 PM

AS DOC #: A000583924

PAGES: 2

REC FEES: 0.00

KATHRYN M. NORBY
CASS COUNTY RECORDER
BY SR _____ Dep

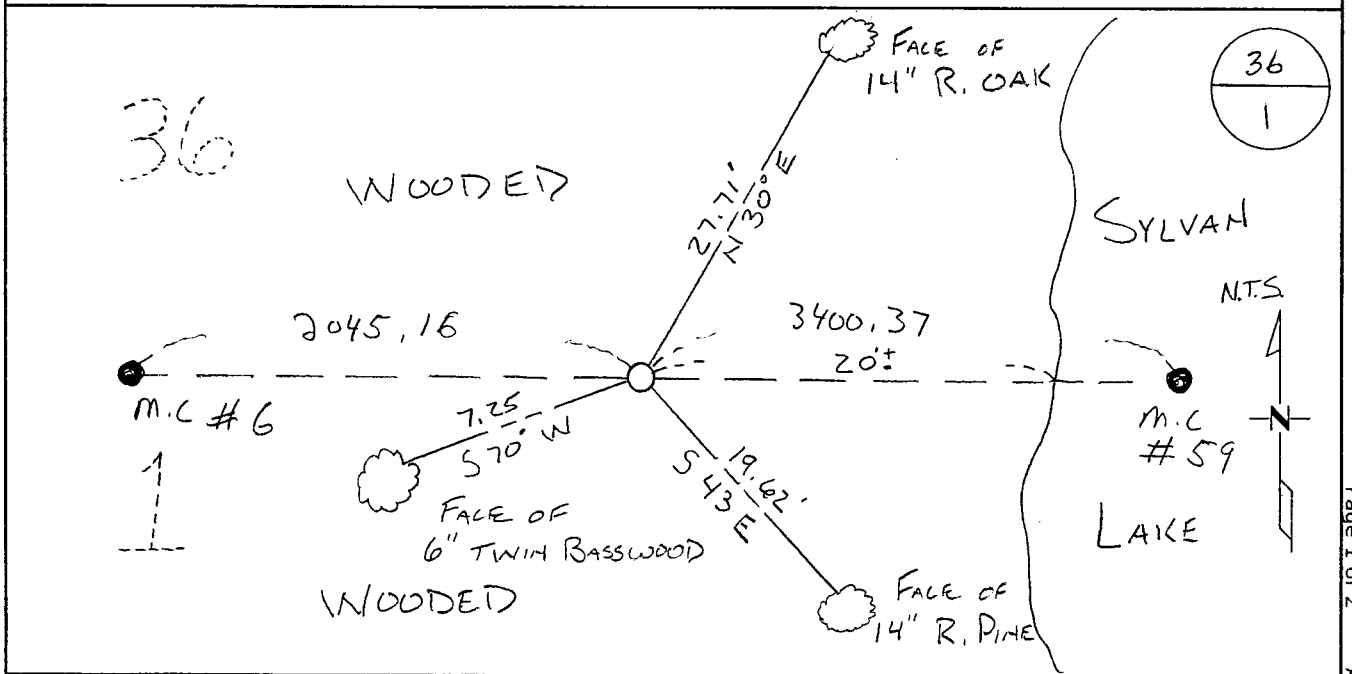
Index Number A-24

CERTIFICATE OF LOCATION OF GOVERNMENT CORNER

MC #12 ON NORTH LINE of Section 1, Township 133, Range 30
5TH Principal Meridian, State of Minnesota, County of Cass

At the corner location shown on the sketch:

- On _____ found a _____
- left monument as found lowered monument removed monument (explain)
- On 7-28-11 placed an 1/2" IRON PIPE WITH CAP MARKED LS 43932



Statement of evidence for this corner location is on back of this page.

I hereby certify that this document was researched and prepared by me or under my direct supervision and that I am a licensed Land Surveyor under the laws of the State of Minnesota.

Signature Chris Hoglund
Chris Hoglund, PS
License No. 43932

Date: 6/13/12

Page 1 of 2
A000583924



Statement of Evidence:

Meander Corner #12 on the North line of Section 1, Township 133 North, Range 30 West, Sylvan Township, 5th Principal Meridian, Cass County, Minnesota.

1858 Original US General Land Office survey by E.N. Darling, set a wood post and bearing trees noted as:

14" Pine	S 80° W	14 links
16" Pine	N 67° W	26 links

1923 Plat of Carlyons Sylvan Park was done in Section 1, does not reference Meander Corner. Filed in the office of the Cass County Recorder.

2011 Westwood Professional Services, Inc. searched the area thoroughly for the corner and accessories, finding nothing. Contacted the MN/DNR, Northern Engineering, Cass County Surveyors Office, BLM and Widseth, Smith, Nolting and Stonemark Land Surveying, but no additional information was found. Computed a double proportioned position for the northeast corner of Section 1, Township 133 Range 30 using Meander Corner #1 and M.C. #13 for a north-south direction and Meander Corner #6 and Meander Corner # 59 for an East-West Direction. Set ½"x14" pipe capped L.S. 43932 at a proportionate distance of 1216.96 feet (1188 GLO) from the computed Northeast Corner of Section 1 and Meander Corner #6. Located set monument with a VRS GPS observation. Analysis of the record data and field evidence indicates that the monument set by Westwood Professional Services in 2011 is the best available evidence for Meander Corner #12.

(Meander Corner)

Cass County Coordinates South Zone (NAD 83, 1996 Adj)

N: 177633.35

E: 517806.36

Central State Plane Coordinate:

N: 827410.26

E: 2587777.72