



A000583914

OFFICE OF THE COUNTY RECORDER  
CASS COUNTY, MINNESOTA  
CERTIFIED, FILED, AND/OR  
RECORDED ON

9/7/2012 3:02:57 PM

AS DOC #: A000583914

PAGES: 2

REC FEES: 0.00

KATHRYN M. NORBY  
CASS COUNTY RECORDER

BY SR Dep

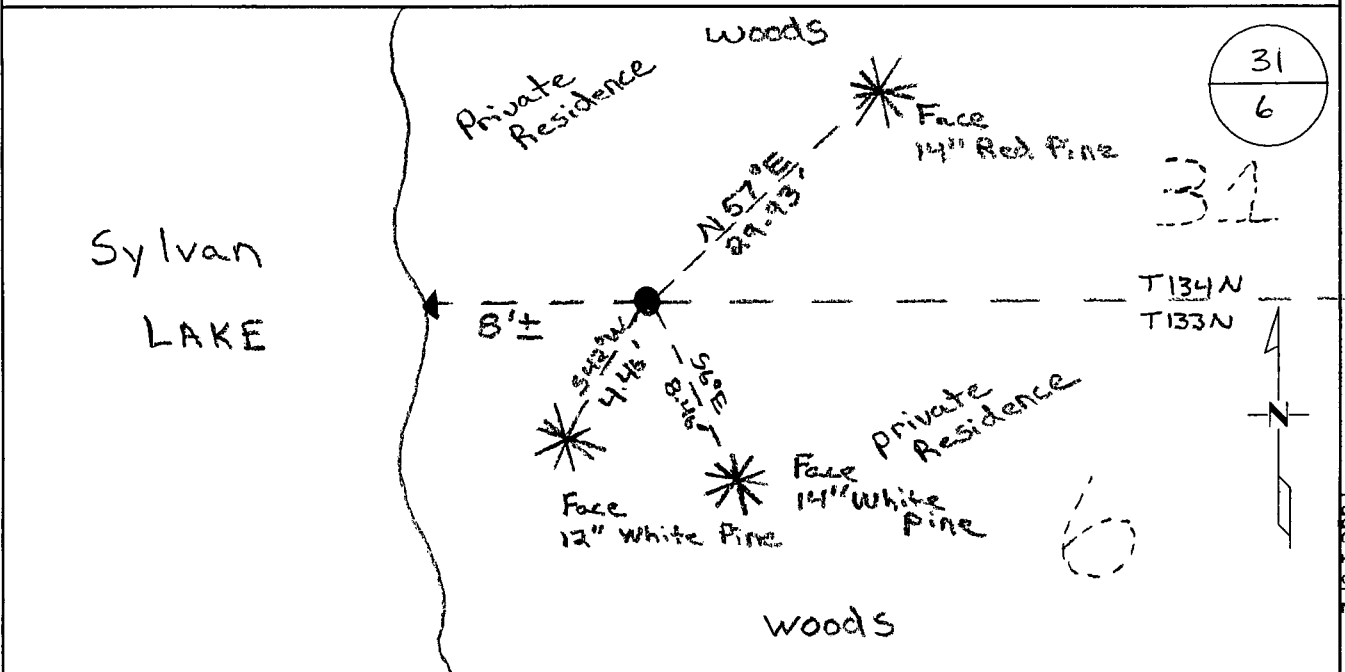
Index Number A 2-3

# CERTIFICATE OF LOCATION OF GOVERNMENT CORNER

MC #59 North line 6 Corner of Section 6, Township 133, Range 29  
5TH Principal Meridian, State of Minnesota, County of Cass

At the corner location shown on the sketch:

- On 5-2011 found a 2" open pipe up 0-3'
- left monument as found       lowered monument       removed monument (explain)
- On \_\_\_\_\_ placed an \_\_\_\_\_



Statement of evidence for this corner location is on back of this page.

I hereby certify that this document was researched and prepared by me or under my direct supervision and that I am a licensed Land Surveyor under the laws of the State of Minnesota.

Signature   
Chris Hoglund, PS  
License No. 43932

Date: 6/13/12





**Statement of Evidence:**

Meander Corner #59 on the North line of Section 6, Township 133 North, Range 29 West, Sylvan Township, 5<sup>th</sup> Principal Meridian, Cass County, Minnesota.

1858 Original US General Land Office survey by E.N. Darling, set a wood post and bearing trees noted as:

20" Pine	S 23 1/2° E	32 links
7" Pine	N 37 3/4° E	42 links

1912 John Curo found old government B.T. stumps (20" Pine, S 23° 30' E, 21.1 Feet and 7" Pine, N 37° 45'E, 27.7 Feet), filed in County Survey Record Book "A" Page 434-443, survey record No. 186, set 3x3x30" oak stake. Reference ties:

Pine (set tack)	S 24° 43' E	21.12 Feet
Pine (set tack)	N 55° 44' E	27.72 Feet
12" Norway Pine	N 37° 55' E	3.81 Feet
8" Birch	S 79° 26' W	3.51 Feet

1960 Dean Anderson plat Sylvan Birch Addition found monument in place and calls it out as the Meander Corner, on file in the office of the Cass County Recorder.

2003 C. Conner #41643 certificate of survey shows monument found in place, on file in the office of the Cass County Surveyor.

2011 Westwood Professional Services, Inc. found a 2" pipe in place from 1960 Dean Anderson Plat, which measured a distance 488.71 feet west of the North Quarter Corner of Section 6, compared to a G.L.O. Distance of 508.86 feet. Located found monument with VRS GPS observation. Analysis of the recovered data, field evidence and survey measurements, indicates that the monument found by Westwood Professional Services, Inc is the accepted as the best available evidence for Meander Corner #59.

Cass County Coordinates South Zone obtained by VRS GPS (NAD 83, 1996 Adj)  
 N:177571.93  
 E: 521206.20