



A000583910

OFFICE OF THE COUNTY RECORDER  
CASS COUNTY, MINNESOTA  
CERTIFIED, FILED, AND/OR  
RECORDED ON

9/7/2012 2:57:32 PM

AS DOC #: A000583910

PAGES: 2

REC FEES: 0.00

KATHRYN M. NORBY  
CASS COUNTY RECORDER

BY SR Dep

Index Number F2-13

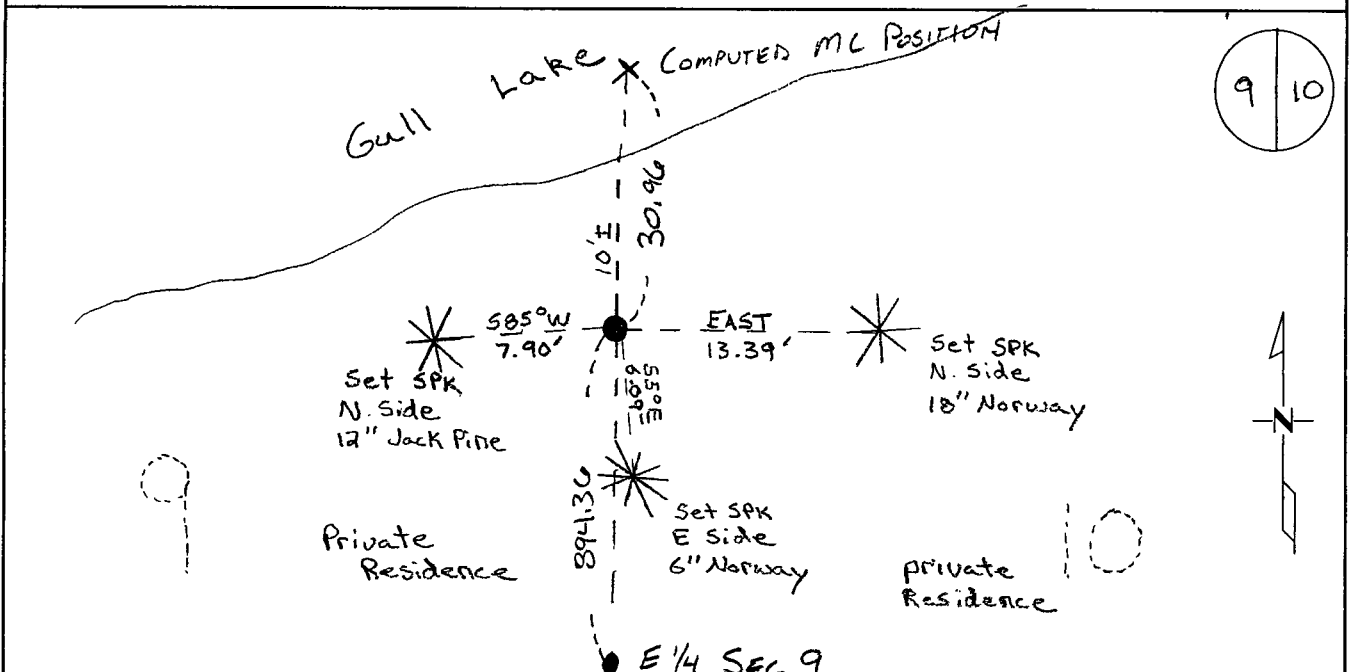
# CERTIFICATE OF LOCATION OF GOVERNMENT CORNER

WITNESS CORNER TO

MC # 51 EAST LINE of Section 9, Township 134, Range 29  
5TH Principal Meridian, State of Minnesota, County of Cass

At the corner location shown on the sketch:

- On 4-18-11 found a 2" open pipe over top of a 1" open pipe. 1" is down 0.7'.
- left monument as found       lowered monument       removed monument (explain)
- On 4-18-11 placed on reset 2" open flush over top of 1 inch.



Statement of evidence for this corner location is on back of this page.

I hereby certify that this document was researched and prepared by me or under my direct supervision and that I am a licensed Land Surveyor under the laws of the State of Minnesota.

Signature

Chris Hoglund, PS  
License No. 43932

Date:

6/13/12





**Statement of Evidence:**

Meander Corner #51 on the East line of Section 9, Township 134 North, Range 29 West, City of East Gull Lake Township, 5<sup>th</sup> Principal Meridian, Cass County, Minnesota.

1865 Original US General Land Office survey by Wright and Walker, set a wood post and bearing trees noted as:

16" Norway Pine	S 5 1/4° E	40 links
17" White Pine	S 18° W	27 links

1920 Plat of Birch Grove on Gull, prepared by L. Knutson shows a monument 897.18 feet north of the E1/4 corner of Section 9. (Corner not labeled on plat), filed in office of the Cass County Recorder.

1922 Plat of East Shore Terrace, prepared by L. Knutson shows monument in area of MC. (Corner not labeled on plat), filed in the office of the Crow Wing County Recorder.

1981 RCM in Crow Wing County Book S105, Page 27 notes found 1.5" iron pipe found at top of steep bank to Gull Lake. No ties found or taken.

2011 Westwood Professional Services, Inc. found a 2" iron pipe in place set as part of the plat of East Shore Terrace. Found monument was 894.36 feet north of the east quarter corner of Section 9. Meander corner position was computed at a GLO distance of 925.32 feet north from the east quarter corner of Section 9 through the found 2" iron pipe as a point of single point of control. Located found monument with a VRS GPS observation. Meander corner falls in Gull Lake because of raised water elevation of 1912 dam. Analysis of the record data and field evidence indicates that the monument found by Westwood Professional Services in 2011 is the best available evidence for a witness corner to Meander Corner #51.

(Witness Corner)

Cass County Coordinates South Zone obtained by VRS GPS (NAD 83, 1996 Adj)  
N: 202404.04  
E: 534940.33

(Meander Corner)

Cass County Coordinates South Zone  
N: 202434.99  
E: 534940.55

Central State Plane Coordinate:

N: 852161.54  
E: 2604977.47