

CERTIFICATE OF LOCATION OF GOVERNMENT CORNER

I hereby certify that this survey, plan, or report was prepared by me or under my direct supervision and that I am a duly Licensed Land Surveyor under the laws of the State of Minnesota.

OFFICE OF THE COUNTY RECORDER
County of Cass

I hereby certify that this document was filed in the Office of the County Recorder at _____ o'clock _____ .M. on the _____ day of _____, 20____ A.D.

Cynthia M. Hidde
Cynthia M. Hidde

County Recorder _____

Date: 7/12/12 License No: 44881
44881

By: _____, Deputy
DOCUMENT NO.

North Quarter Corner of Section 33, Township 137, Range 30, 5th P.M.

On _____ found a _____

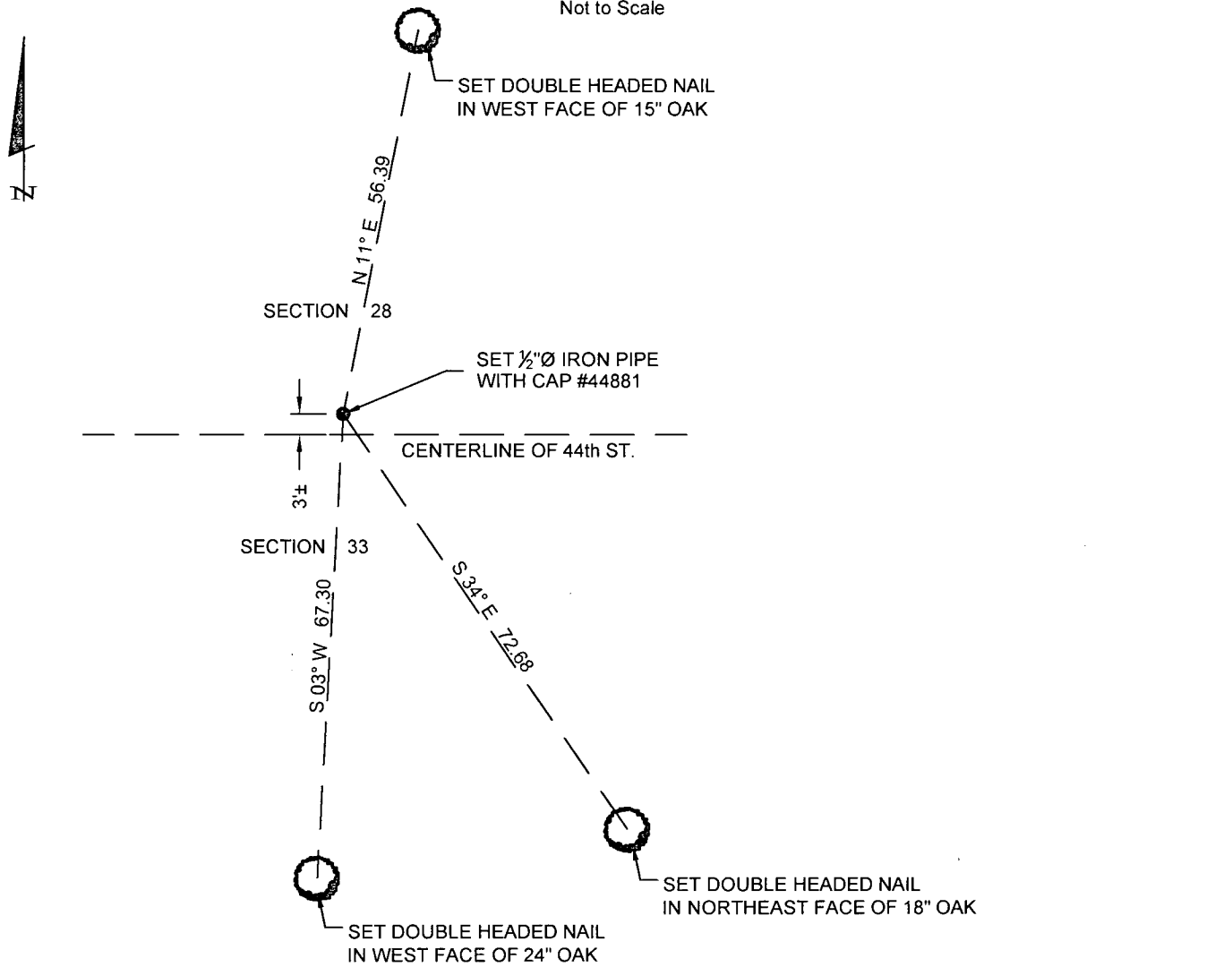
left monument as found, lowered monument, removed monument (explain)

On May 11, 2012 placed a 1/2"Ø Iron Pipe with cap #44881

SKETCH OF REFERENCE TIES

Corner Index: **V-11**

Not to Scale



Statement of evidence for this corner position is on the back of this page



Statement of Evidence

North Quarter Corner of Section 33, Township 137 North, Range 30 West
of the 5th P.M., Cass County, Minnesota

- 1870 R. Cronk, General Land Office (GLO) Deputy Surveyor set a post for the original corner and referenced it as follows: 20" Dead Oak, N63°E, 110 links; 8" Black Oak, S 27°E, 95 links.
- 1975 Landecker & Associates, Inc. File 1079, shows a monument in place when surveying the NW 1/4-SW 1/4.
- 2012 On May 11, 2012 Stonemark Land Surveying, Inc. did not find evidence of the monument. Therefore set a 1/2"Ø Iron Pipe with cap #44881 in a position as perpetuated from previous Landecker survey and established references for the position are shown on the face of this document.
- 2012 This monument was accepted on May 11, 2012 by Cynthia M. Hidde, PLS #44881 as a perpetuation of the original corner.

A000582324
OFFICE OF COUNTY RECORDER
CASS COUNTY MINNESOTA
CERTIFIED, FILED, AND/OR
RECORDED ON
07/19/2012 2:12:33 PM
AS DOC #: A000582324
PAGES: 2 REC FEES: 0.00
KATHRYN M. NORBY
COUNTY RECORDER