

CERTIFICATE OF LOCATION OF GOVERNMENT CORNER

Meander (#16) Corner of Section 4
 Township 141 N, Range 26 W, 5th P.M.
 STATE OF MINNESOTA, COUNTY OF CASS.

A000581320
OFFICE OF COUNTY RECORDER
CASS COUNTY MINNESOTA
CERTIFIED, FILED, AND/OR
RECORDED ON
06/12/2012 11:25:58 AM
AS DOC #: A000581320
PAGES: 2 REC FEES: 0.00
KATHRYN M. NORBY
COUNTY RECORDER

(reserved for recording data)

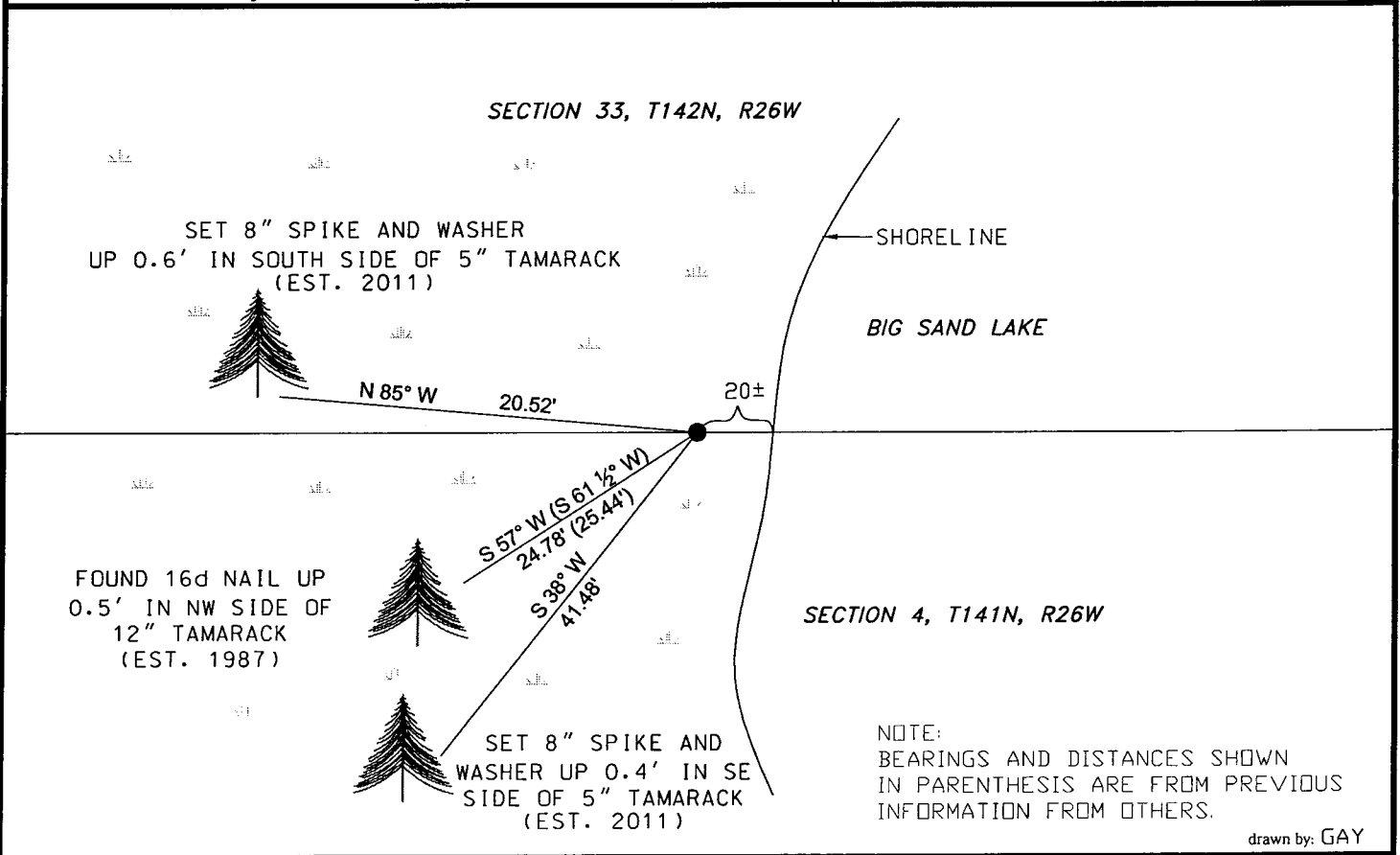
On 5-2-11, found a(n): 2" Square tube with a 3" Square Aluminum Cap flush with surface. Corner is in floating bog having poor stability.

- left monument as found lowered monument
 removed monument (explain) raised monument

On , set a(n):

See "Statement of Evidence" for further details (on back)

GPS I.D.: Co. Proj. No.:



NOTE:
 BEARINGS AND DISTANCES SHOWN
 IN PARENTHESIS ARE FROM PREVIOUS
 INFORMATION FROM OTHERS.

drawn by: GAY

"SKETCH OF REFERENCE TIES"

(not to scale - bearings are magnetic)

Ties are measured to center of monument unless otherwise noted.

UNITS = Metric English

NAD 83 Latitude (N): 47°03'49.23536"
 Longitude (W): 93°58'43.23964"
 CCNZC 83/96 Northing: 194949.97
 Easting: 559315.60
 NAD 83 S.P. Northing: 1080754.19
 Central Zone Easting: 2692286.44

Dennis J. Warner
 signature
 Printed Name: Dennis J. Warner

5/10/2012
 date

License No. 42656

County Surveyor Land Surveyor

STATEMENT OF EVIDENCE: Meander Corner between Section 4, Township 141 North, Range 26 West, and Section 33, Township 142 North, Range 26 West of the 5th Principal Meridian.

1872 This corner was established by Walker, Allen & Putnam, Deputy Surveyors, in the township boundary survey. Their notes indicate a post was placed at the corner and established witnesses as follows:

Tamarack	6"	N 30° W	5 links	(3.30 feet)
Tamarack	4"	S 01° W	121 links	(79.86 feet)

1964 James Ekstrom searched for this corner and found no evidence. Information on file with the US Forest Service Office in Cass Lake.

1987 Roger Mustonen, on file with the USFS Cass Lake, 141-26, Book 1, page 27, found a 15" Tamarack with overgrown blaze he determines to be an original bearing tree. He sets a 2" square tubular steel, aluminum capped Cass County monument and notes the following witnesses:

Tamarack	15"	N 28½° W	3.48 feet
Tamarack	10"	N 61½° W	25.44 feet
Spruce	3"	N 01½° E	15.82 feet

2011 Personnel from Short Elliott Hendrickson found the 2" square tube capped with a 3" aluminum cap monument and 3 bearing trees from the 1987 Mustonen survey. The 15" Tamarack is now a well rotted stump with scribes visible. The 10" Tamarack is now 12" with blaze partially grown over and scribes visible with a 16d nail in the northwest face. The 3" spruce is windfall. This monument is in the fringe wetland of Big Sand Lake and is very unstable. Witnesses were found and made as shown on the face of this certificate. An analysis of the record information and field evidence supports this monument as the best evidence of the original corner position.