

CERTIFICATE OF LOCATION OF GOVERNMENT CORNER

Northeast 1 Corner of Section 1

Township 141 N, Range 27 W, 5th P.M.

STATE OF MINNESOTA, COUNTY OF CASS.

A000581319
OFFICE OF COUNTY RECORDER
CASS COUNTY MINNESOTA
CERTIFIED, FILED, AND/OR
RECORDED ON
06/12/2012 11:25:57 AM
AS DOC #: A000581319
PAGES: 2 REC FEES: 0.00
KATHRYN M. NORBY
COUNTY RECORDER

(reserved for recording data)

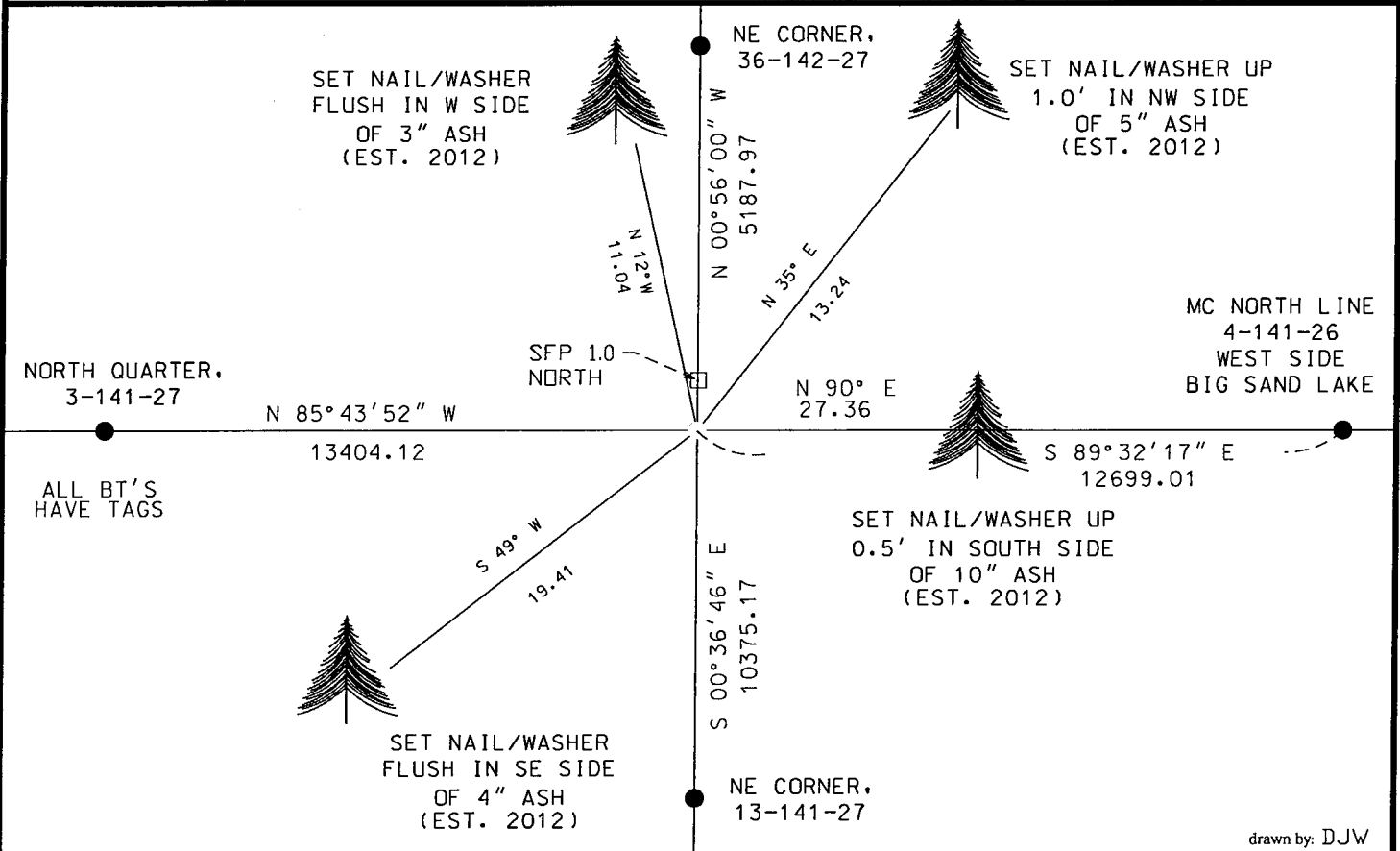
On _____, found a(n): _____

- left monument as found
- lowered monument
- removed monument (explain)
- raised monument

On 5-01-2012, set a(n): 1.25' X 4' galvanized pipe with a 3.5" alum. cap up 0.5 feet above swamp by double proportionate measurement. Area is flooded.

See "Statement of Evidence" for further details (on back)

GPS I.D.: _____ Co. Proj. No.: _____



drawn by: DJW

"SKETCH OF REFERENCE TIES"

(not to scale - bearings are magnetic)



Ties are measured to center of monument unless otherwise noted.

UNITS = Metric English

NAD 83 Latitude (N): 47°03'50.58648"
 Longitude (W): 94°01'46.67886"
 CCNZC 83/96 Northing: 195052.36
 Easting: 546616.99
 NAD 83 S.P. Northing: 1080851.67
 Central Zone Easting: 2679588.52

I hereby certify that this document and the data contained herein was prepared by me or under my direct supervision.

Dennis J. Warner
 signature

5/10/2012
 date

License No. 42656

Printed Name: Dennis J. Warner

County Surveyor Land Surveyor

STATEMENT OF EVIDENCE: Township corner, northeast corner of Section 1, T141N, R27 West of the 5th Principal Meridian.

1871 This corner was established by Walker, Allen & Putnam, Deputy Surveyors, in the township boundary survey. Their notes indicate a post was placed at the corner from which:

Cedar	8"	S50E	16 links	(10.56 feet)
Tamarack	10"	N12 1/2W	23 links	(15.18 feet)
Tamarack	10"	N58E	22 links	(14.52 feet)
Tamarack	12"	S52W	21 links	(13.86 feet)

1967 US Forest Service, J. Ekstrom, searched for the corner for 2 man hours and found no evidence. Book 2, 141-27, page 30.

2011 Personnel from Short Elliott Hendrickson searched for the monument and its accessories but none were found. The corner was set lost by double proportionate measurement using the closest found corners in all four directions. Witnesses were made as shown on the face of this certificate. An analysis of the record information and field evidence supports this monument as the best evidence of the corner position.