

# CERTIFICATE OF LOCATION OF GOVERNMENT CORNER

Meander (#2) Corner of Section 1

Township 142N, Range 25 W, 5th P.M.

STATE OF MINNESOTA, COUNTY OF CASS.

**A000581316**  
**OFFICE OF COUNTY RECORDER**  
**CASS COUNTY MINNESOTA**  
**CERTIFIED, FILED, AND/OR**  
**RECORDED ON**  
**06/12/2012 11:25:54 AM**  
**AS DOC #: A000581316**  
**PAGES: 2 REC FEES: 0.00**  
**KATHRYN M. NORBY**  
**COUNTY RECORDER**

On 4-28-2011, found a(n): 2" Iron post with a 3" Brass cap 2.8' above the surface leaning easterly. Reset position from Milo Stefan survey in 2000.

- left monument as found       lowered monument  
 removed monument (explain)       raised monument

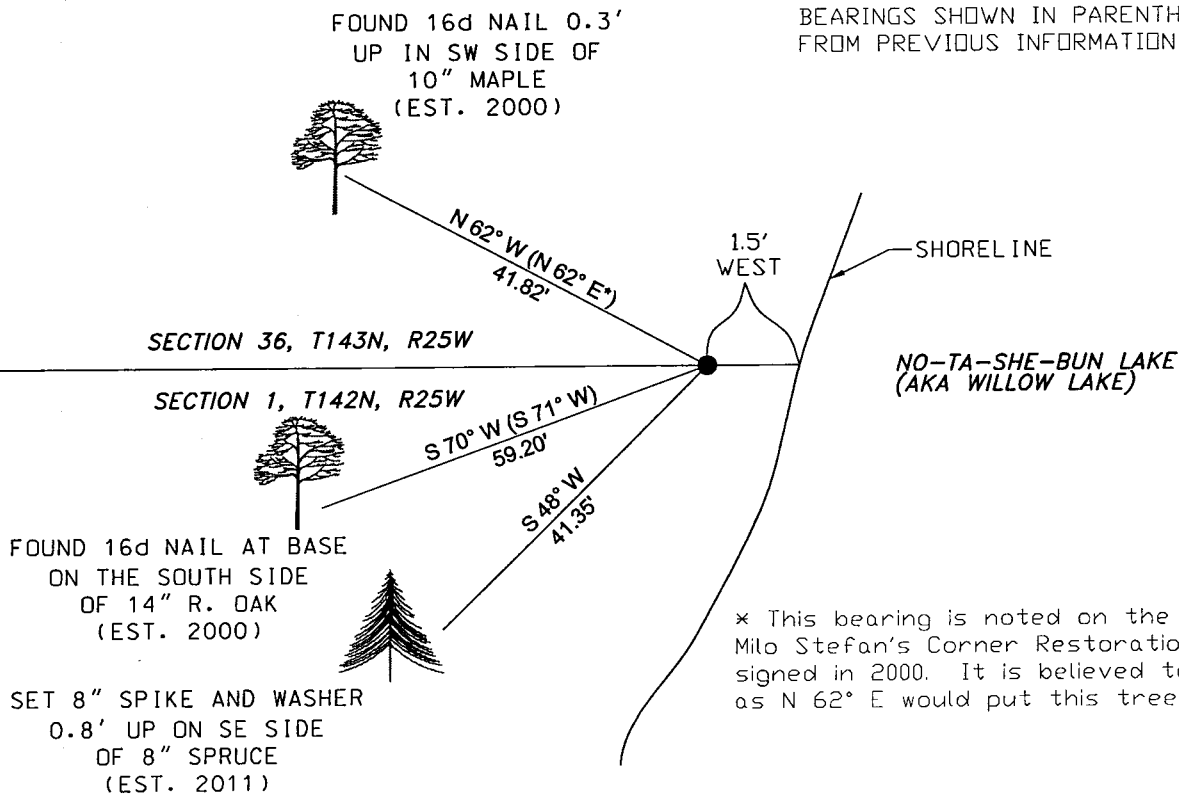
On \_\_\_\_\_, set a(n): \_\_\_\_\_

(reserved for recording data)

See "Statement of Evidence" for further details (on back)

GPS I.D.: \_\_\_\_\_ Co. Proj. No.: \_\_\_\_\_

NOTE:  
 BEARINGS SHOWN IN PARENTHESIS ARE FROM PREVIOUS INFORMATION FROM OTHERS.



\* This bearing is noted on the face of Milo Stefan's Corner Restoration drawing signed in 2000. It is believed to read N 62° W as N 62° E would put this tree in the lake.

drawn by: GAY

## "SKETCH OF REFERENCE TIES"

(not to scale - bearings are magnetic)



Ties are measured to center of monument unless otherwise noted.

UNITS =  Metric  English

NAD 83 Latitude (N): 47°08'58.23904"  
 Longitude (W): 93°46'41.29774"  
 CCNZC 83/96 Northing: 226474.84  
 Easting: 609125.23  
 NAD 83 S.P. Northing: 1112295.74  
 Central Zone Easting: 2742082.12

*Dennis J. Warner*  
 signature

Printed Name: Dennis J. Warner

5/10/2012  
 date

License No. 42656

County Surveyor       Land Surveyor

STATEMENT OF EVIDENCE: Meander corner, west shore of No-ta-she-bun Lake, Section 1, T142N, R25W of the 5<sup>th</sup> Principal Meridian.

1871 This corner was established by Walker, Allen & Putnam, Deputy Surveyors, in the township boundary survey. Their notes indicate a post was placed at the corner and established witnesses as follows:

Cedar	6"	N 03° E	8 links	(5.28 feet)
Cedar	6"	S 04° W	10 links	(6.60 feet)

1934 MN/DOT right of way map (file no. 5-68), information on line on GIS mapping web page, shows a distance from the South Quarter Corner of Section 36, T143N, R25W, to the meander corner as being 1590.6 feet.

1966 James Ekstrom recovered a scribed square post with a 1" diameter iron post along along side, and a Cedar stump with scribe marks visible. He set a 2" x 60" iron pipe with a 3" diameter bronze cap from which:

Birch	7"	N 66° W	81.8 feet
Elm	6"	N 25° W	57.1 feet

Information on file with the US Forest Service Office in Cass Lake, Book 1, 143-25.

1971 William Okerman, filed a Affidavit As To Location Of Government Corner, document number not shown but it is signed and dated, and on file with the Office of Register of Deeds in Cass County. The information shown is the same as in the 1966 entry above.

1976 A Bureau of Land Management Dependant Resurvey shows the Meander Corner in Place and lists the following witnesses:

Birch	10"	N66W	125 links	(82.5 feet)	(1966)
Elm	7"	N25W	87 links	(57.42 feet)	(1966)

Information on file with the US Forest Service Office in Cass Lake.

2000 Milo Stephan found the iron pipe set by William Okerman tipped nearly horizontal, and the stumps of both bearing trees. He reset the iron pipe from the 1966 Bearing trees and made three new Bearing Trees as follows:

Red Maple	7"	N 62° E	41.82 feet
Black Ash	6"	S 83° W	40.78 feet
Red Oak	8"	S 71° W	59.20 feet

Information on file with the Cass County Survey Office.

2011 Personnel from Short Elliott Hendrickson found the monument set by William Okerman leaning Easterly, and the three bearing trees from Milo Stephan's 2000 survey. The Red Maple and Red Oak were in good condition and the Black Ash had been chewed off by beaver. The monument was placed in position from the two bearing trees and one new bearing tree blazed and scribed as shown on the face of this certificate. An analysis of the record information and field evidence supports this monument as the best evidence of the original corner position.