

CERTIFICATE OF LOCATION OF GOVERNMENT CORNER

A000581310
OFFICE OF COUNTY RECORDER
CASS COUNTY MINNESOTA
CERTIFIED, FILED, AND/OR
RECORDED ON
06/12/2012 11:25:48 AM
AS DOC #: A000581310
PAGES: 2 REC FEES: 0.00
KATHRYN M. NORBY
COUNTY RECORDER

(reserved for recording data)

Witness Corner to Meander (#9) Corner of Section 2
 Township 143N, Range 25 W, 5th P.M.
 STATE OF MINNESOTA, COUNTY OF CASS.

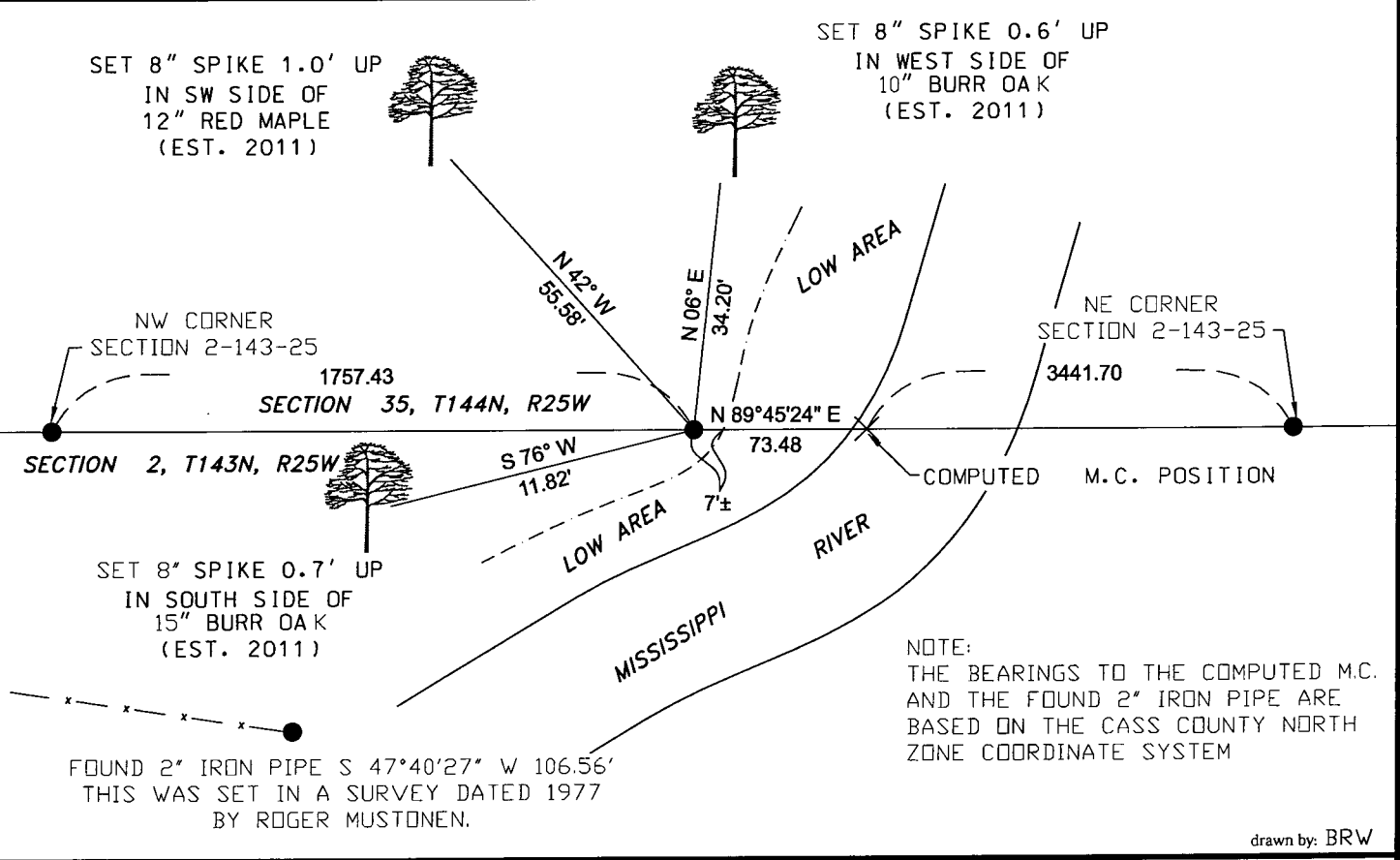
On _____, found a(n): _____
DATE

- left monument as found lowered monument
 removed monument (explain) raised monument

On 6-15-2011, set a(n): 2 1/4" x 36" aluminum pipe
DATE
 with a 3 1/4" aluminum cap (mag. in cap) on line between
 the northeast and northwest corners of Section 2.

See "Statement of Evidence" for further details (on back)

GPS I.D.: _____ Co. Proj. No.: _____



"SKETCH OF REFERENCE TIES"

(not to scale - bearings are magnetic)

Ties are measured to center of monument
unless otherwise noted.

UNITS = Metric English

NAD 83 Latitude (N): 47°14'13.88776"
 Longitude (W): 93°48'34.85657"
 CCNZC 83/96 Northing: 258414.91
 Easting: 601109.26
 NAD 83 S.P. Northing: 1144232.10
 Central Zone Easting: 2734055.15

Dennis J. Warner
signature

Printed Name: Dennis J. Warner

5/10/2012
date

License No. 42656

County Surveyor Land Surveyor

STATEMENT OF EVIDENCE: Witness Corner to the Meander corner, west bank of Mississippi River, Section 2, Township 143 North, Range 25 West of the 5th Principal Meridian.

1872 The Meander corner was established by Hayward & Griffin, Deputy Surveyors, in the township boundary survey. Their notes indicate a post was placed at the corner and established witnesses as follows:

Balsam 6" S 21° W 210 links (138.6 feet)

1900 Corps of Engineers map of the Pokegama Reservoir does not indicate the corner to be a known corner. Information on file with the US Forest Service in Cass Lake.

1977 Plat of Survey by Roger Mustonen indicates he set a 2" iron pipe on an old fence line on the west bank of the Mississippi River. He does not call this monument the Meander Corner, but does indicate it being on the Township Line. Roger also did not file a Certificate of Location of Government Corner for this position.

1996 Minnesota Department of Natural Resources survey of Schoolcraft State Park indicates no monument was found on the west bank of the Mississippi River.

2011 Personnel from Short Elliott Hendrickson found the monument set in 1977 by Roger Mustonen. This position is found to have no further basis other than the fence line, and as such was not accepted as the true position of the original Meander Corner. A diligent search was made in the location of the prorated location for the Meander Corner and no evidence of the monument or bearing trees was found. This location fell about 60 feet east of the west river bank, and in about 6 feet of water. A 2 ¼" x 36" aluminum pipe with a 3 ¼" aluminum cap with magnet was placed as a Witness Corner to the Meander Corner 73.48 feet, S 89°45'24" W of the prorated position, and on line between the northeast and northwest corners of Section 2. Witnesses were made as shown on the face of this certificate. An analysis of the record information and field evidence supports this monument as the best evidence of the corner position.