

CERTIFICATE OF LOCATION OF GOVERNMENT CORNER

Northeast Corner of Section 1

Township 143 N, Range 27 W, 5th P.M.

STATE OF MINNESOTA, COUNTY OF CASS.

A000581308
OFFICE OF COUNTY RECORDER
CASS COUNTY MINNESOTA
CERTIFIED, FILED, AND/OR
RECORDED ON
06/12/2012 11:25:46 AM
AS DOC #: A000581308
PAGES: 2 REC FEES: 0.00
KATHRYN M. NORBY
COUNTY RECORDER

(reserved for recording data)

GPS I.D.: _____ Co. Proj. No.: _____

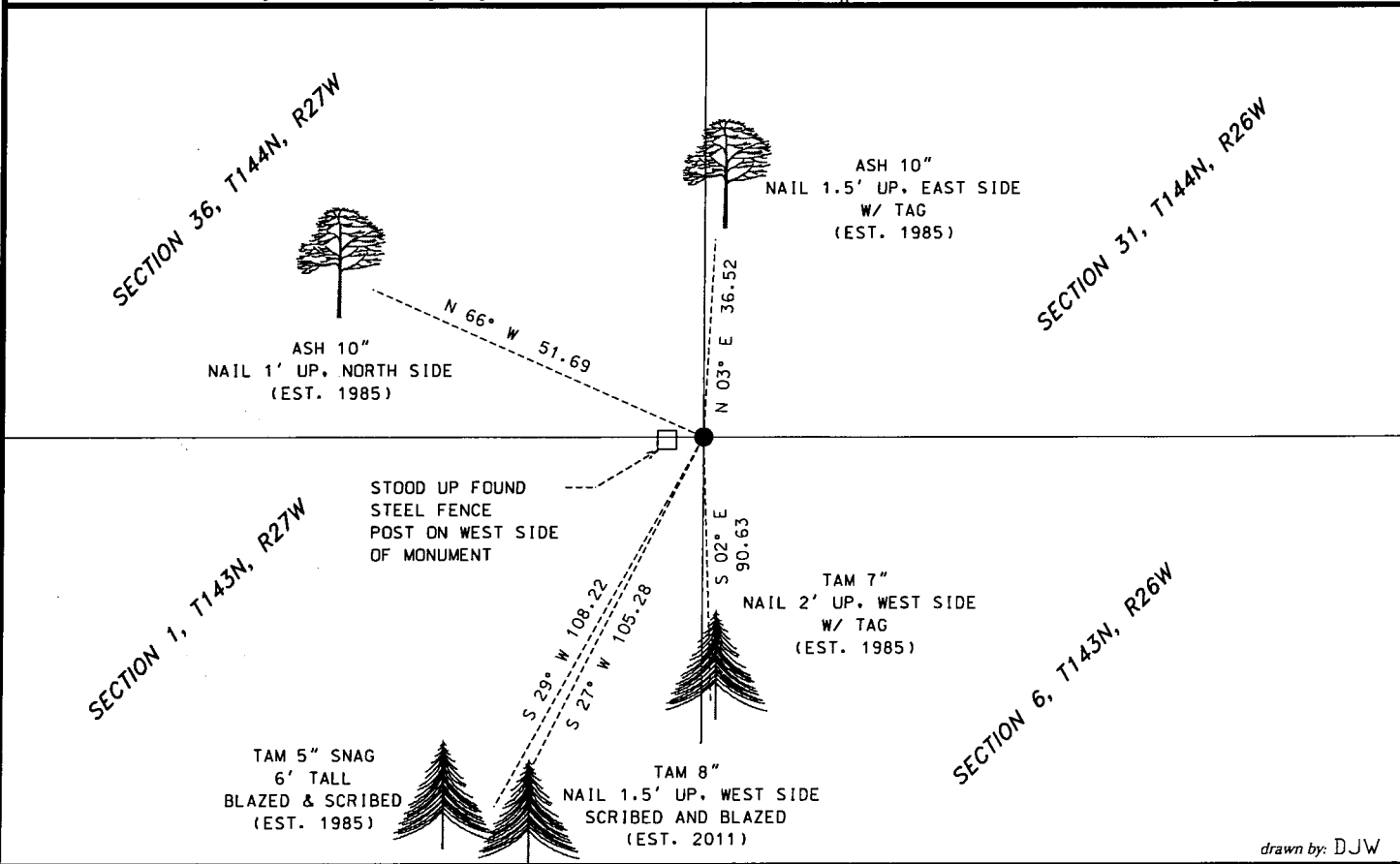
037304
 Tx:4026798

On 2-14-2011, found a(n): _____
DATE
 brass cap on a 7" circular concrete monument
 approximately 1.5 feet below the surface of the swamp.

- left monument as found lowered monument
 removed monument (explain) raised monument

On _____, set a(n): _____
DATE

See "Statement of Evidence" for further details (on back)



drawn by: DJW

"SKETCH OF REFERENCE TIES"

(not to scale - bearings are magnetic)

Ties are measured to center of monument unless otherwise noted.

UNITS = Metric English

NAD 83 Latitude (N):	47° 14' 27.677"
Longitude (W):	94° 01' 45.316"
CCNZC 83 Northing:	259604.85
Easting:	546556.60
NAD 83 S.P. Northing:	1145401.71
(Central) Easting:	2679502.96

Dennis J. Warner
signature

Printed Name: Dennis J. Warner

5/10/2012
date

License No. 42656

County Surveyor Land Surveyor

STATEMENT OF EVIDENCE: Township corner, northeast corner of Section 1, T143N, R27 West of the 5th Principal Meridian.

- 1872 This corner was established by Hayward & Griffin, Deputy Surveyors, in the township boundary survey. Their notes indicate a post was placed at the corner and established witnesses as follows:
- | | | | | |
|--------|----|------|----------|-------------|
| Birch | 6" | S17E | 10 links | (6.60 feet) |
| Spruce | 5" | N73E | 5 links | (3.30 feet) |
| Spruce | 5" | S70W | 6 links | (3.96 feet) |
| Spruce | 6" | N20W | 8 links | (5.28 feet) |
- 1900 The US Corps of Engineers, Pokegama Reservoir Survey, indicates the corner to be a known corner. Information on file with the US Forest Service Office in Cass Lake.
- 1937 The corner position was determined to be obliterated at this time when the Government Land Office was performing a dependent resurvey of the south boundary of T144N, R27W. The obliterated position was established by using the northeast corner of Section 6 and by using a well defined east-west blazed line to the south that they believed were original blazes for the 1872 or 1900 survey. Since this position fit well with the Leech River on the north, the position was accepted. A more detailed description of this position establishment is included in the notes of the dependent resurvey. A two foot long, seven inch diameter brass capped concrete monument was placed at the obliterated position. Information on file with the US Forest Service Office in Cass Lake. Witnesses were established as follows:
- | | | | |
|-------|-----|-------------|-------------------------|
| Cedar | 6" | S82 3/4E | 188 links (124.08 feet) |
| Ash | 7" | N02 1/2E | 55 links (36.3 feet) |
| Cedar | 9" | S66deg 10'W | 242 links (159.72 feet) |
| Cedar | 14" | N04W | 91 links (60.06 feet) |
- 1968 Bill Okerman, licensed surveyor, information on file with the US Forest Service Office in Cass Lake, recovered the 1937 concrete monument and found and established witnesses as follows:
- | | | | |
|-------|-----|-------|--|
| Cedar | 14" | N04W | .91 chains (recovered, all scribing visible) |
| Ash | 6" | N66W | 51.85 feet (new) |
| Ash | 5" | N01E | 36.53 feet (new) |
| SFP | | South | 7.0 feet (new) |
| SFP | | North | 5.85 feet (new) |
- 1971 William Okerman, filed an Affidavit As To Location of Government Corner, document number not present but is signed and dated by the Register of Deeds, on file with the Cass County Surveyors Office, the instrument shows the 1968 information by Okerman except for the recovered 14" Cedar the distance is shown as 0.91 feet and is shown in 1937 as being 0.91 links.
- 1985 US Forest Service, Book 3, page 49. G. Kosenko & B. Ausk recovered a 7 inch diameter by 3 foot long cylindrical concrete monument, lying over in swamp grass. They also recovered two 1968 Okerman bearing trees. They reset the monument 10" above the swamp from the 1968 BT's. The monument had a 3 3/4" diameter brass cap, witnesses as follows:
- | | | | | |
|-----------------|-------|-------|-------------|---------------------------------------|
| Cedar down/dead | North | | 61.00 feet | no scribing, tree badly rotted (1937) |
| Ash | 8" | N03E | 36.52 feet | (1968) |
| Ash | 8" | N66W | 51.69 feet | (1968) |
| SFP | | South | 6.5 feet | |
| Tamarack5" | | S02E | 90.63 feet | |
| Tamarack5" | | S29W | 108.25 feet | |
| SFP | | West | 3.0 feet | |
- 2008 Cass County Survey Office field notes, on file in the Cass County Survey Office, indicate the GLO Brass cap in concrete was recovered, tipped northwest, with a steel sign post adjacent to the south. Could not move due to frost, set 60d spike from 1985 witnesses. Steel sign posts have fallen over. Also make note of the following recovered witnesses:
- | | | | | |
|----------|----|------|------------|-------------------------------|
| Ash | 8" | N66W | 51.85 feet | 16d spike on n. side, up 1.0' |
| Ash | 8" | N01E | 36.53 feet | 16d spike on e. side, up 1.1' |
| Tamarack | 6" | S02E | 90.55 feet | 16d spike on w. side, up 1.3' |
- 2011 Personnel from Short Elliott Hendrickson found the 1937 monument and witnesses were found and established as shown on the face of this certificate. An analysis of the record information and field evidence supports this monument as the best evidence of the corner position.