

CERTIFICATE OF LOCATION OF GOVERNMENT CORNER

Closing Corner, Northeast 1 Corner of Section 1
 Township 144 N, Range 27 W, 5th P.M.
 STATE OF MINNESOTA, COUNTY OF CASS.

A000581302
OFFICE OF COUNTY RECORDER
CASS COUNTY MINNESOTA
CERTIFIED, FILED, AND/OR
RECORDED ON
06/12/2012 11:25:40 AM
AS DOC #: A000581302
PAGES: 2 REC FEES: 0.00
KATHRYN M. NORBY
COUNTY RECORDER

037298
 Tx:4026798

On _____, found a(n): _____
DATE

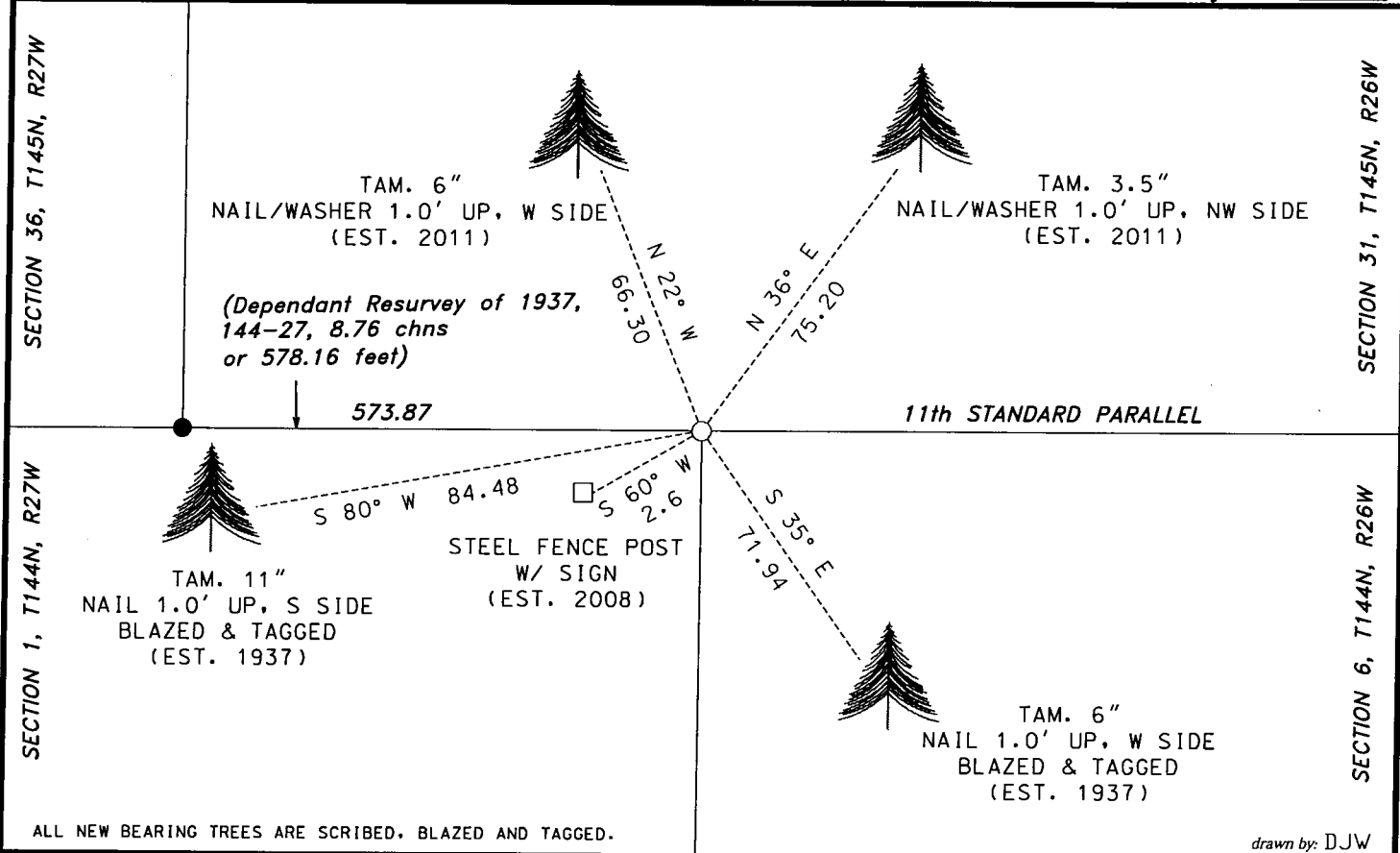
- left monument as found
- removed monument (explain)
- lowered monument
- raised monument

On 4-13-2011, set a(n): 1 1/4" x 6' galvanized pipe with a 3 1/2" aluminum cap flush with swamp.
DATE

(reserved for recording data)

See "Statement of Evidence" for further details (on back)

GPS I.D.: _____ Co. Proj. No.: _____



ALL NEW BEARING TREES ARE SCRIBED, BLAZED AND TAGGED.

drawn by: DJW

"SKETCH OF REFERENCE TIES"

(not to scale - bearings are magnetic)

Ties are measured to center of monument unless otherwise noted.

UNITS = Metric English

NAD 83 Latitude (N):	47°19'31.09519"
Longitude (W):	94°01'45.38912"
CCNZC 83 Northing:	290348.96
Easting:	546477.90
NAD 83 S.P. Northing:	1176145.59
(Central) Easting:	2679412.27

Dennis J. Warner
 signature

Printed Name: Dennis J. Warner

5/10/2012
 date

License No. 42656

County Surveyor Land Surveyor

STATEMENT OF EVIDENCE: Closing corner, northeast corner of Section 1, T144N, R27 West of the 5th Principal Meridian.

1873 This corner was established by P.H. Conger, Deputy Surveyor, in the township boundary survey. His notes indicate a post was placed at the corner.

1937 A GLO dependant resurvey of T144N, R27 W, shows the corner as being 8.76 chains (578.16 feet) east of the standard township corner. A 2' by 6" monument was set lost with a 3 1/2" brass cap, from the following found witnesses:

Tamarack 4" S35 1/2E 71.94 feet

Tamarack 5" S80 1/2W 84.48 feet

The new information they reported for the recovered witnesses are as follows:

Tamarack 5" S35 30'E 71.94 feet with spike and tag

Tamarack 8" S80 30'W 84.48 feet with nail and tag

Information found online with the Minnesota Land Information Center.

2008 Personnel from the USFS found the 1937 trees and located the corner position with GPS from ties. They state the corner had sunk and they could not find it, from which they placed:

8' SFP S60W 2.6 feet

Information on file with the US Forest Service Office in Cass Lake.

2011 Personnel from Short Elliott Hendrickson searched extensively for the corner monument but none were found. A new monument was placed from the 1937 witnesses. Witnesses were found and made as shown on the face of this certificate. An analysis of the record information and field evidence supports this monument as the best evidence of the corner position.