

CERTIFICATE OF LOCATION OF GOVERNMENT CORNER

Standard South Quarter Corner of Section 33
Township 145 N , Range 26 W , 5th P.M.
STATE OF MINNESOTA, COUNTY OF CASS.

A000581300
OFFICE OF COUNTY RECORDER
CASS COUNTY MINNESOTA
CERTIFIED, FILED, AND/OR
RECORDED ON
06/12/2012 11:25:38 AM
AS DOC #: A000581300
PAGES: 2 REC FEES: 0.00
KATHRYN M. NORBY
COUNTY RECORDER

037296
Tx: 4026798

On 1-24-2011, found a(n): 2" galvanized pipe with a brass cap in good condition in pipeline clearing.

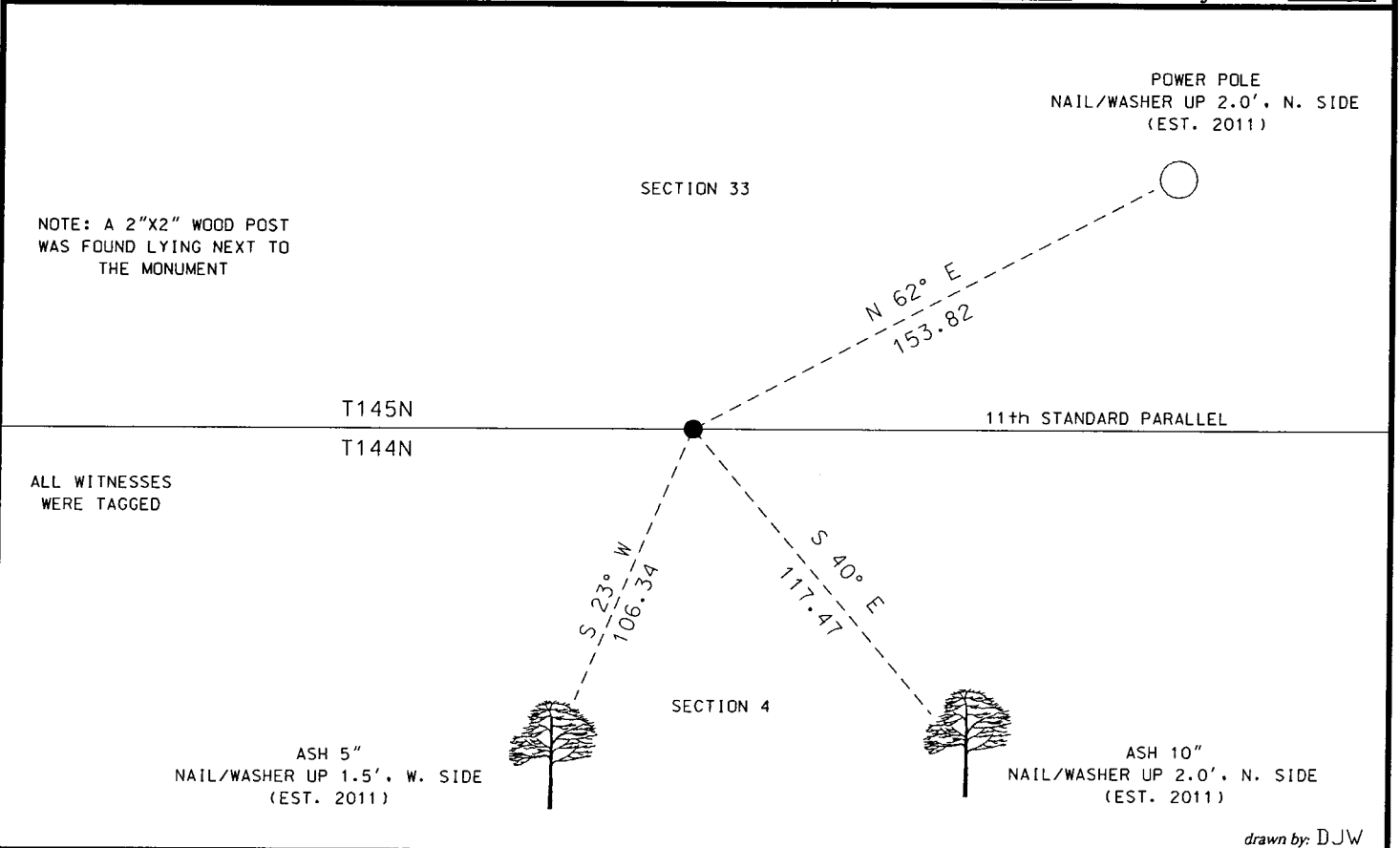
- left monument as found
- lowered monument
- removed monument (explain)
- raised monument

On _____, set a(n): _____

(reserved for recording data)

See "Statement of Evidence" for further details (on back)

GPS I.D.: _____ Co. Proj. No.: _____



ALL WITNESSES WERE TAGGED

drawn by: DJW

"SKETCH OF REFERENCE TIES"

(not to scale - bearings are magnetic)



Ties are measured to center of monument unless otherwise noted.

UNITS = Metric English

NAD 83 Latitude (N):	47° 19' 30.79387"
Longitude (W):	93° 58' 42.18323"
CCNZC 83 Northing:	290352.78
Easting:	559100.09
NAD 83 S.P. Northing:	1176154.29
(Central) Easting:	2692034.50

Dennis J. Warner
signature

I hereby certify that this document and the data contained herein was prepared by me or under my direct supervision.

5/10/2012
date

License No. 42656

Printed Name: Dennis J. Warner

County Surveyor Land Surveyor

STATEMENT OF EVIDENCE: Standard South Quarter Corner of Section 33, T145N, R26 West of the 5th Principal Meridian.

1871 This corner was established Geo. R. Stuntz, Deputy Surveyor, in the township boundary survey. His notes indicate a post was placed at the Corner and established witnesses as follows:

Tamarack	6"	N30E	98 links	(64.68 feet)
Aspen	5"	N28W	122 links	(80.52 feet)

1953 R.W. Fassett, USFS, Resurvey found the original Tamarack stub with scribe marks and set a 4" treated and scribed post. Information on file with the US Forest Service office in Cass Lake.

1971 Curtis Krause, USFS, to perpetuate the corner, set a 2" x 5' long galvanized steel pipe filled with concrete and capped with a 3" brass tablet and witnesses as follows:

Tamarack	12"	N67E	27.1 feet	scribed
Ash	6"	N28W	47.4 feet	scribed
Tamarack	14"	N73W	3.3 feet	scribed
SFP		East	1.9 feet	w/ sign
Treated post	4"	North	1.7 feet	reset
Hub	2"x2"x36"	North	1.7 feet	fd next to treated post-reset
Balsam-dead	8"	SE	3'	found w/ FSLP

Information on file with the US Forest Service Office in Cass Lake.

1978 A Certificate Of Location Of Government Corner, Document Number 246278, signed by Milo Stefan, Licensed Surveyor, No. 12261, states the above described information from 1971 except for the Balsam witness.

2011 Personnel from Short Elliott Hendrickson found the 1971 galvanized pipe at the corner. Witnesses found and established as shown on the face of this certificate. An analysis of the record information and field evidence supports this monument as the best evidence of the corner position.