

CERTIFICATE OF LOCATION OF GOVERNMENT CORNER

Standard Southeast Corner of Section 36
 Township 145 N, Range 28 W, 5th P.M.
 STATE OF MINNESOTA, COUNTY OF CASS.

A000581297
 OFFICE OF COUNTY RECORDER
 CASS COUNTY MINNESOTA
 CERTIFIED, FILED, AND/OR
 RECORDED ON
06/12/2012 11:25:35 AM
 AS DOC #: **A000581297**
 PAGES: **2** REC FEES: **0.00**
KATHRYN M. NORBY
 COUNTY RECORDER

037293
 Tx:4026798

On 1-24-2011, found a(n): 6" concrete monument
 with a 3" brass cap flush with the ground.

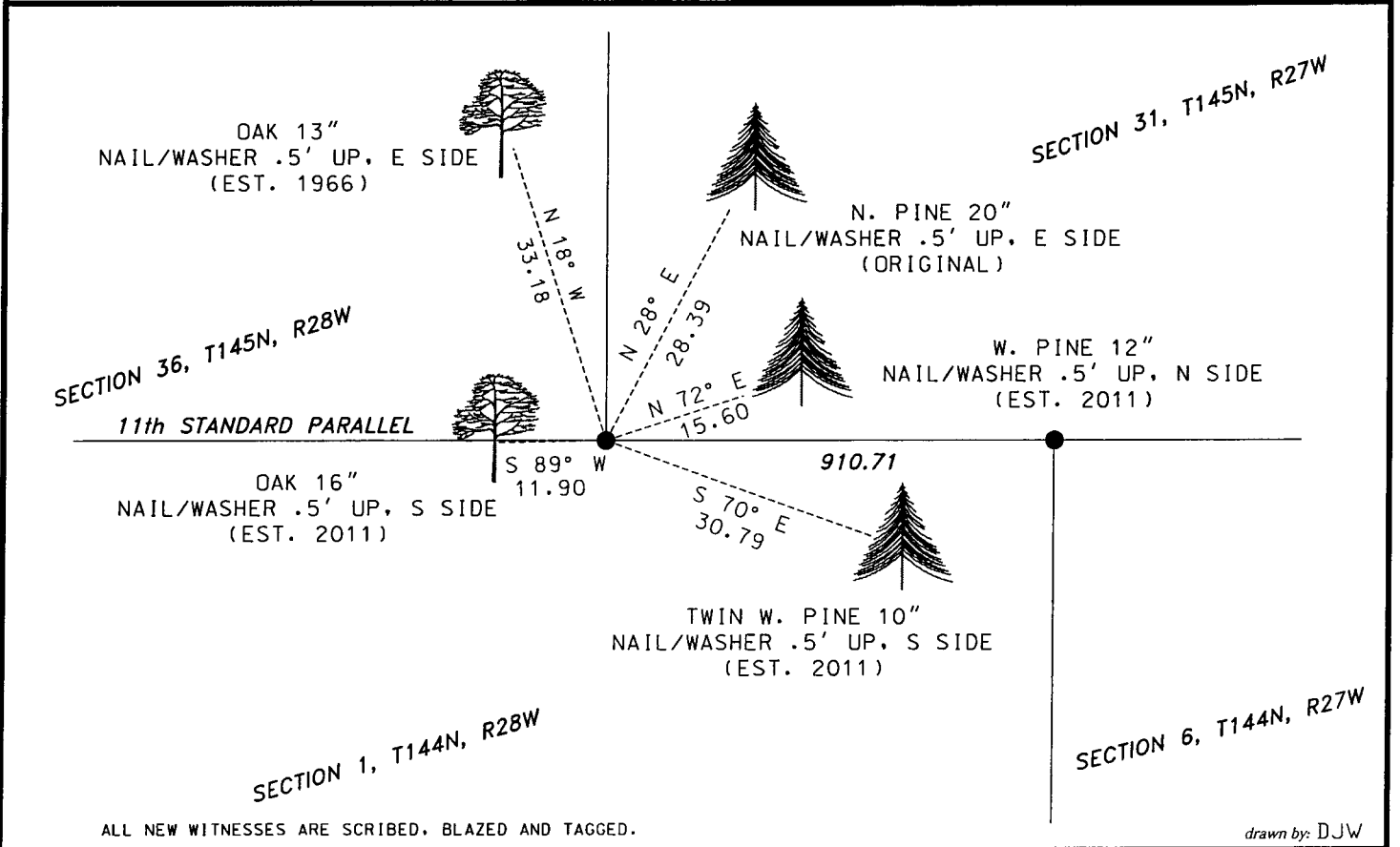
- left monument as found lowered monument
 removed monument (explain) raised monument

On _____, set a(n): _____

(reserved for recording data)

See "Statement of Evidence" for further details (on back)

GPS I.D.: _____ Co. Proj. No.: _____



ALL NEW WITNESSES ARE SCRIBED, BLAZED AND TAGGED.

drawn by: DJW

"SKETCH OF REFERENCE TIES"

(not to scale - bearings are magnetic)

Ties are measured to center of monument unless otherwise noted.

UNITS = Metric English

NAD 83 Latitude (N):	<u>47° 19' 31.44456"</u>
Longitude (W):	<u>94° 09' 31.78157"</u>
CCNZC 83 Northing:	<u>290333.97</u>
Easting:	<u>514345.38</u>
NAD 83 S.P. Northing:	<u>1176117.72</u>
Central) Easting:	<u>2647279.63</u>

I hereby certify that this document and the data contained herein was prepared by me or under my direct supervision.

Dennis J. Warner
 signature

5/10/2012
 date

License No. 42656

Printed Name: Dennis J. Warner

County Surveyor Land Surveyor

STATEMENT OF EVIDENCE: Standard township corner, southeast corner of Section 36, T145N, R28 West of the 5th Principal Meridian.

1871 This corner was established by G.R. Stuntz, Deputy Surveyor, in the township boundary survey. His notes indicate a post was placed at the corner and established witnesses as follows:

Yellow Pine	16"	N35W	60 links (39.60 feet)
Yellow Pine	6"	N20E	43 links (28.38 feet)

1912 John W. Curo, Cass County Surveyor, set a 2 ½" by 48" iron monument at the township corner from both government bearing trees he found in place, green and plainly marked. On file in the Office of the Cass County Recorder as Survey No. 222 in Survey Book A, page 544.

1933 USFS technician Z.A. Zasado visited this corner, on file with the US Forest Service Office in Cass Lake, and recovered a 18" iron pipe in good condition and lists the following witnesses:

N. Pine	14"	northeast	33.00 feet
N. Pine	16"	northeast	33.00 feet
N. Pine	24"	northwest	33.00 feet

1937 The GLO made a dependant resurvey of the 11th Standard Parallel, on file with the Office of the Secretary of State, St. Paul. GLO surveyors set a 6" diameter concrete monument with a 3 ½ " brass cap at a position determined from the original bearing trees and made the following witnesses:

W. Pine	5"	N69.5E	23 links (15.18 feet)
R. Oak	6"	N87.5W	18 links (11.88 feet)

1966 Milton Hansey, USFS personnel, recovered the 1937 concrete monument with a brass cap, with a 2 ½" capped pipe found along side and made the following witnesses:

Burr Oak	10"	N14W	33.18 feet
W. Spruce	7"	S77E	27.94 feet

Information on file with the US Forest Service Office in Cass Lake.

1981 Whitehorn and Olesen, USFS personnel, visited the corner and found the 1937 concrete monument in good condition and a 2.5 inch O.D. iron pipe with a well cap alongside. Information on file with the US Forest Service Office in Cass Lake.

1983 Robertson and Harman, USFS personnel, recovered the monument in good condition. Information on file with the US Forest Service Office in Cass Lake.

1984 Kenneth Whitehorn, with the USFS, information on file with the US Forest Service Office in Cass Lake, filed a Certificate for the corner, document number 274372, and lists the following witnesses:

Pine Stump	20.4"	N34W	39.54 feet	Original Bt
Red Oak	10.8"	N18W	33.18 feet	1966
Red Pine	23.3"	N25E	28.39 feet	Original Bt
White Pine	8.0"	N70E	15.60 feet	1937 GLO
White Spruce	8.7"	S75 30"E	27.94 feet	1966
SFP		East	1.6 feet	
Red Oak	11.9"	N88 30"W	11.90 feet	1937 GLO

2011 Personnel from Short Elliott Hendrickson found the 1937 GLO monument and witnesses were found and made as shown on the face of this certificate. An analysis of the record information and field evidence supports this monument as the best evidence of the corner position.