

CERTIFICATE OF LOCATION OF GOVERNMENT CORNER

Northeast Corner of Section 25
 Township 145 N, Range 28 W, 5th P.M.
 STATE OF MINNESOTA, COUNTY OF CASS.

A000581294
OFFICE OF COUNTY RECORDER
CASS COUNTY MINNESOTA
CERTIFIED, FILED, AND/OR
RECORDED ON
06/12/2012 11:25:32 AM
AS DOC #: A000581294
PAGES: 2 REC FEES: 0.00
KATHRYN M. NORBY
COUNTY RECORDER

037290
 TX:4026798

On 1-08-04, found a(n):
DATE
2 1/2" iron pipe w/cap 14" above the ground.

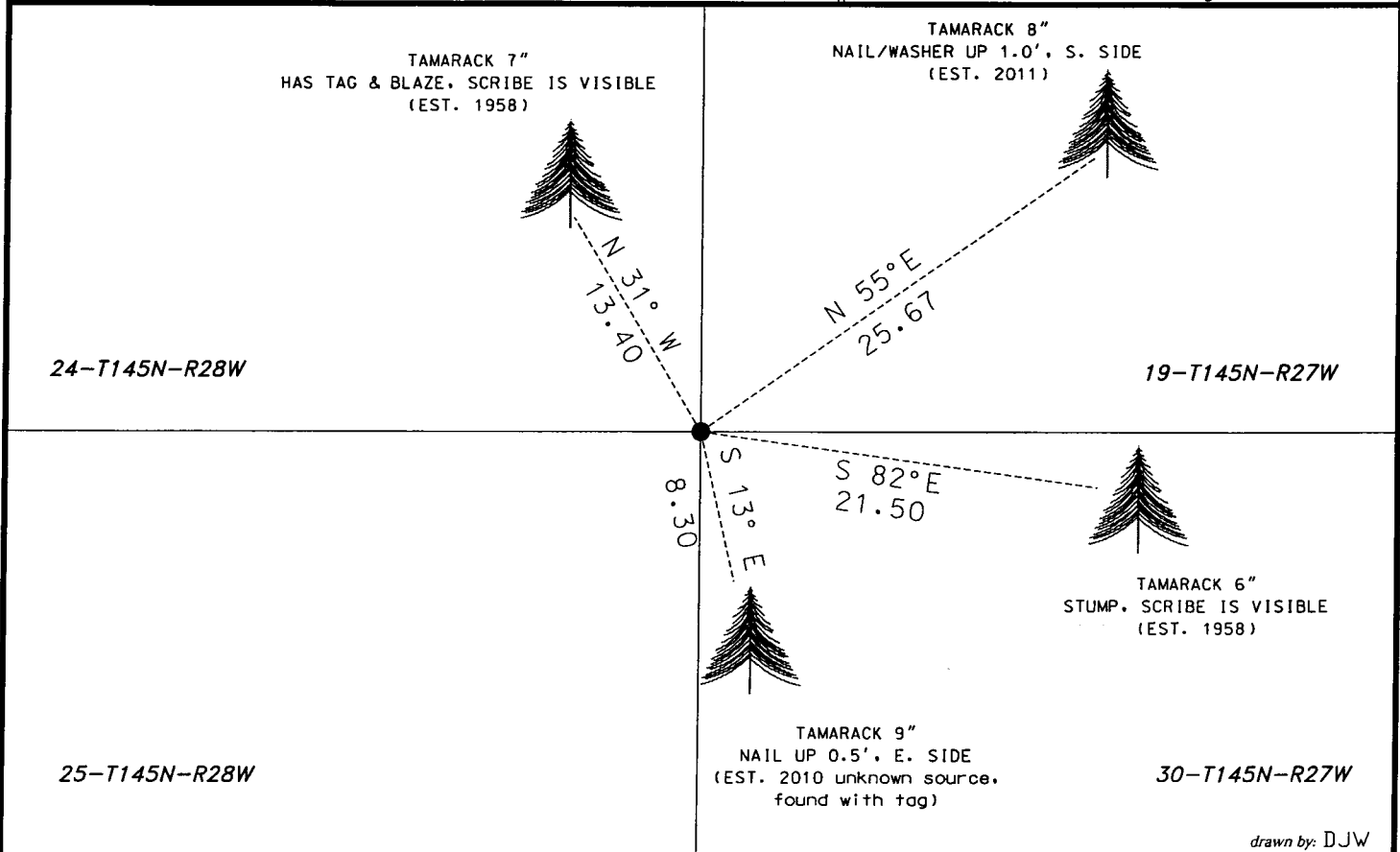
- left monument as found lowered monument
 removed monument (explain) raised monument

On _____, set a(n):
DATE

(reserved for recording data)

See "Statement of Evidence" for further details (on back)

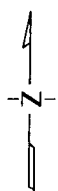
GPS I.D.: _____ Co. Proj. No.: _____



drawn by: DJW

"SKETCH OF REFERENCE TIES"

(not to scale - bearings are magnetic)



Ties are measured to center of monument unless otherwise noted.

UNITS = Metric English

NAD 83 Latitude (N):	47°21'17.584"
Longitude (W):	94°09'48.060"
CCNZC 83 Northing:	301088.11
Easting:	513216.468
NAD 83 S.P. Northing:	1186871.48
(Central) Easting:	2646146.28

I hereby certify that this document and the data contained herein was prepared by me or under my direct supervision.

Dennis J. Warner 5/10/2012 License No. 42656
signature date

Printed Name: Dennis J. Warner County Surveyor Land Surveyor

STATEMENT OF EVIDENCE: Northeast Corner of Section 25, T145N, R28 West of the 5th Principal Meridian.

1873 This corner was established by P.H. Conger, Deputy Surveyor, in the township boundary survey. His notes indicate a post was placed at the Section Corner and established witnesses as follows:

Tamarack	6"	N52W	10 links (6.60 feet)
Tamarack	6"	N24E	16 links (10.56 feet)
Tamarack	6"	S60W	12 links (7.92 feet)
Tamarack	4"	S39E	29 links (19.14 feet)

1900 The U.S. Army Corps of Engineers Lake Winnibigoshish Reservoir map indicates the corner to be a known section corner. Map on file with the USFS office in Cass Lake.

1912 John Curo, Cass County Surveyor, Book A, pages 544-550, Survey Record No. 222, visited the corner and found the following:

Gov't Tam.	6"	N52W	6.60 feet	found stump plainly marked
Gov't Tam.	6"	N24E	10.56 feet	found stump plainly marked
Gov't Tam.	6"	S60W	7.92 feet	found stump plainly marked
Gov't Tam.	4"	S39E	19.14 feet	found stump plainly marked (17.48 feet)

Mr. Curo states that "we find old stake set well in to swamp, found all four original BT stumps which check for bearing but differ in distance by about 1.0'. Set a 2 ½" x 48" iron pipe over 5' long Tam. stake which is driven solid into swamp-18" above swamp".

Established new witnesses as follows:

Tamarack	3"	S53 deg 31'E	12.54 feet
Tamarack	3"	S61 deg 35'W	16.44 feet
Tamarack	3"	N28 deg 18'W	9.56 feet
Tamarack	4"	N32 deg 50'E	26.49 feet

1926 R.A. Dahms, Engineer, found a cast iron monument at the corner, transit notes Cass S.A.R. #9, Book 156, Page 3, 792' south of STA. 68+58, ditch survey. Information on file with Cass County Surveyors Office.

1928 D.F. Kirkmire, USFS personnel, visited the corner and states that he found the 2 ½" iron pipe set by Curo at the north edge of a Tamarack swamp. Information on file with the USFS office in Cass Lake.

1955 Curo Book 245, Image 37, indicates a 2 ½" x 48" monument at the corner.

1958 Joe Lausche, USFS personnel, states he found a 2" x 24" high iron pipe at the corner and established new witnesses as follows:

Tamarack	7"	N31W	13.4 feet	
Tamarack	6"	S20W	8.9 feet	
Tamarack	6"	S82E	21.5 feet	
Tamarack	7"	N54E	18.7 feet	FSLP

Mr. Lausche states that the corner is in a Tamarack swamp approximately 834 feet south of County Road #9 to ¼ corner. Tag on north side of County Road #9. Information on file with the USFS office in Cass Lake.

2011 Personnel from Short Elliott Hendrickson found the 1912 2 ½" monument set by Curo. Witnesses found and established as shown on the face of this certificate. An analysis of the record information and field evidence supports this monument as the best evidence of the corner position.