

CERTIFICATE OF LOCATION OF GOVERNMENT CORNER

EAST Corner of Section 30, Township 136, Range 30, 5th P.M.

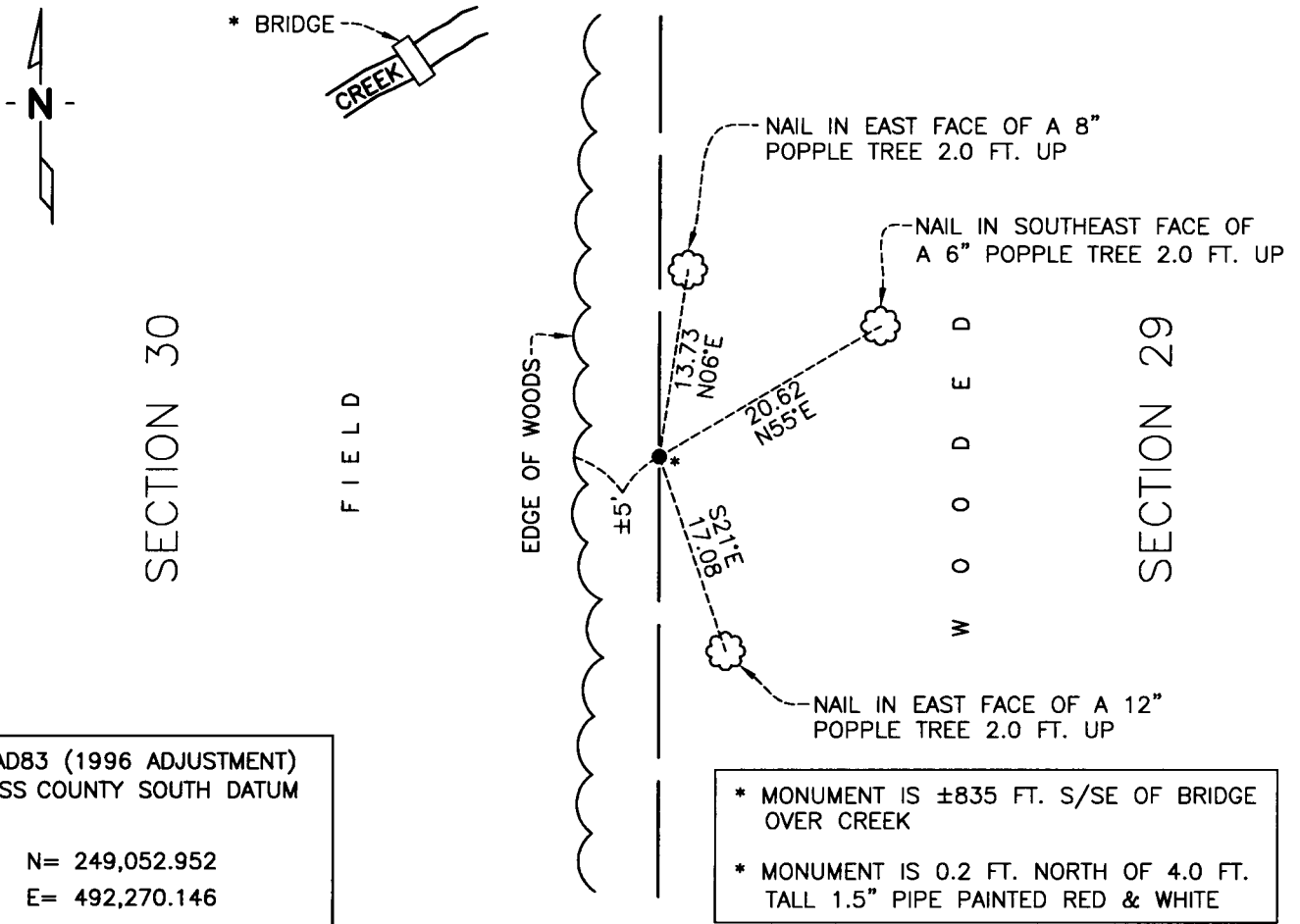
STATE OF MINNESOTA, County of CASS

At the corner location shown on the sketch:

- On 5/4/12 found FOUND IRON PIPE WITH RLS# 11865 UP 0.1'
- left monument as found, lowered monument, removed monument (explain)
- On _____ PLACED _____
DATE



SKETCH OF REFERENCE TIES



Statement of evidence relative to this corner location is on back of page.

I hereby certify that this document and the data contained herein was prepared by me or under my direct supervision.

Craig Johnson
CRAIG JOHNSON SURVEYOR
 Registration No. 44530
 DATE 05/15/2012

- Land surveyor,
- County Surveyor,

OFFICE OF THE COUNTY RECORDER

County of _____
 I hereby certify that this document was filed in the Co. Recorders office at ____M. on the _____ day of _____ A.D., 20____
 County Recorder _____
 By _____, Deputy
 DOCUMENT NO. _____

Statement of Evidence:**East corner of Section 30, Township 136 North, Range 30 West**

- Oct. 1870 R. Cronk, GLO Deputy Surveyor set a wood post for the original corner and referenced it as follows:
- | | | |
|-----------|-------|-----------------------|
| 8" Spruce | N73°E | 20 links (13.34 feet) |
| 9" Spruce | S40°W | 35 links (23.35 feet) |
- 2001 James Nielsen, LS 11865, while surveying in Section 29, computed this corner by using single proportion, on line and mid way between the NW and SW corners of Section 29.
- Jan. 2004 John Walker, LS 18098, used Nielsen's position for the East 1/4 corner of Section 30 during a survey of the Stoney Brook Fisheries Management Area for the Minnesota DNR, (DNR file no. FMA00508).
- May 2012 Craig E. Johnson, LS, CFedS, 44530, while surveying in Section 29, found Nielsen's 1/2" pipe capped 11865, Johnson accepted the pipe as the corner and set reference ties as depicted on the face of this certificate.

A000580963
OFFICE OF COUNTY RECORDER
CASS COUNTY MINNESOTA
CERTIFIED, FILED, AND/OR
RECORDED ON
05/31/2012 10:45:03 AM
AS DOC #: A000580963
PAGES: 2 REC FEES: 0.00
KATHRYN M. NORBY
COUNTY RECORDER