

CERTIFICATE OF LOCATION OF GOVERNMENT CORNER

MC #24 of Section 3, Township 143 N., Range 30 W., 5th P.M.
State of Minnesota, County of Cass

At the corner location shown on the sketch:

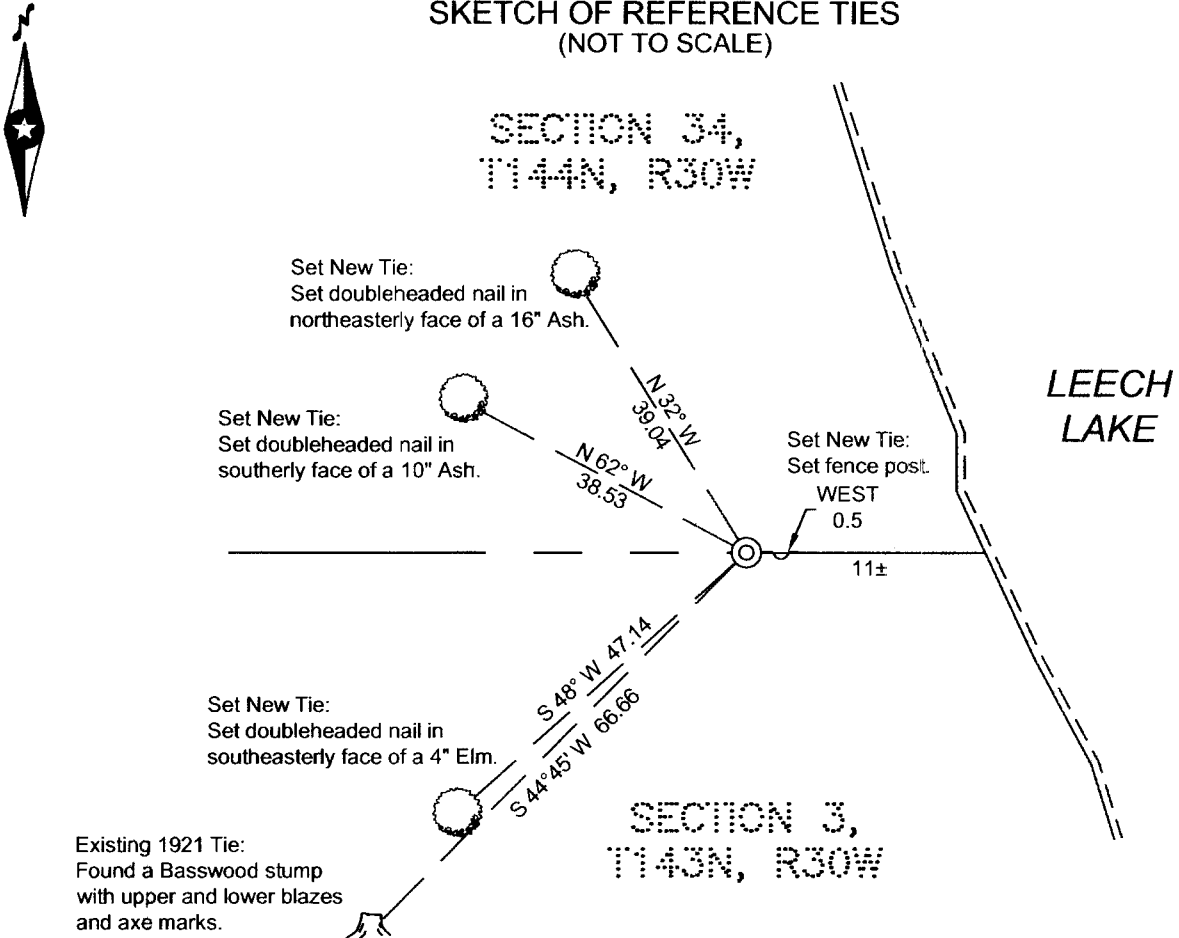
On 04-05-2012 found remains of 1921 SW BT

left monument as found lowered monument removed monument (explain)

On 04-05-2012 placed a 3/4" x 20" iron pipe with a 3-1/2" diameter aluminum cap, up 0.5'



SKETCH OF REFERENCE TIES (NOT TO SCALE)



NOTE: All bearings are true.

Statement of evidence relative to this corner location is on the back of this page.

I hereby certify that this survey, plan, or report was prepared by me or under my direct supervision and that I am a duly Licensed land Surveyor under the laws of the State of Minnesota. I further certify that this United States public land survey monument record is correct and complete to the best of my knowledge and belief.

Terry L. Freeman
Terry L. Freeman, Land Surveyor

Date 4/11/12 MN License No. 21367

A000579602
OFFICE OF COUNTY RECORDER
CASS COUNTY MINNESOTA
CERTIFIED, FILED, AND/OR
RECORDED ON
04/16/2012 10:58:44 AM
AS DOC #: A000579602
PAGES: 2 REC FEES: 0.00
KATHRYN M. NORBY
COUNTY RECORDER

Index No. A.0 - 14.3

STATEMENT ON EVIDENCE

MC #24 of Section 3, Township 143 North, Range 30 West of the 5th Principal Meridian.

In 1875, B.C. Baldwin, U.S. Deputy Surveyor, set a wood post in place to mark the location of this corner and established bearing trees as follows: a 6" White Birch, N23°E 14 links and a 12" White Birch, S43°W 28 links.

1900, U.S. Army Corp of Engineers map for the Leech Lake Reservoir shows corner was found by surveyor Horace Dunaway. A copy of the map is on file in the Cass County Survey Department.

In 1921, Albinus N. Kimmell, U.S. Cadastral Engineer, found a squared post and original BT's laying on the ground. He set a 1" x 36" iron pipe with stamped brass cap and marked two new BT's: a 7" Elm, N13°45'E 184 links and an 8" Basswood, S44°45'W 101 links. Running notes on file in the Cass County Survey Department.

On June 21, 2011, a Northern Engineering & Consulting survey crew searched for corner and BT's. Also searched for 1/16 and section corners to west. They found a 1934 CCC Metal location Poster at the East 1/16 corner of sections 4 and 33. MC Corner position calculated at the lost, single proportion position using the 1921 GLO bearings and distances between the East 1/16 corner of Section 4 and the northeast corner of Section 1, using the compass rule adjustment. Computed MC position falls near Leech Lake.

On April 5, 2012, Terry Freeman of Northern Engineering & Consulting and Brian Hippen, Cass County Survey Technician found the stump of the 1921 SW Basswood BT with upper and lower blazes and axe marks. They set a 3/4" x 20" iron pipe with a 3-1/2" aluminum cap, up 0.5 feet for the MC. Three ties were set as shown on the front page of this certificate. I accept the set monument as a perpetuation of the original corner.

MC Position

Minnesota State Plane (Central Zone)

Northing 1143599.728
Easting 2572727.970

County Coordinates (Cass County North)

Northing 257848.256
Easting 439779.045