

CERTIFICATE OF LOCATION OF GOVERNMENT CORNER

EAST QUARTER Corner of Section 33, Township 135 N, Range 32 W

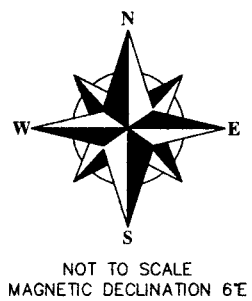
5TH Principal Meridian, State of Minnesota, County of CASS

At the corner location shown on the sketch:

On _____ found a _____
DATE

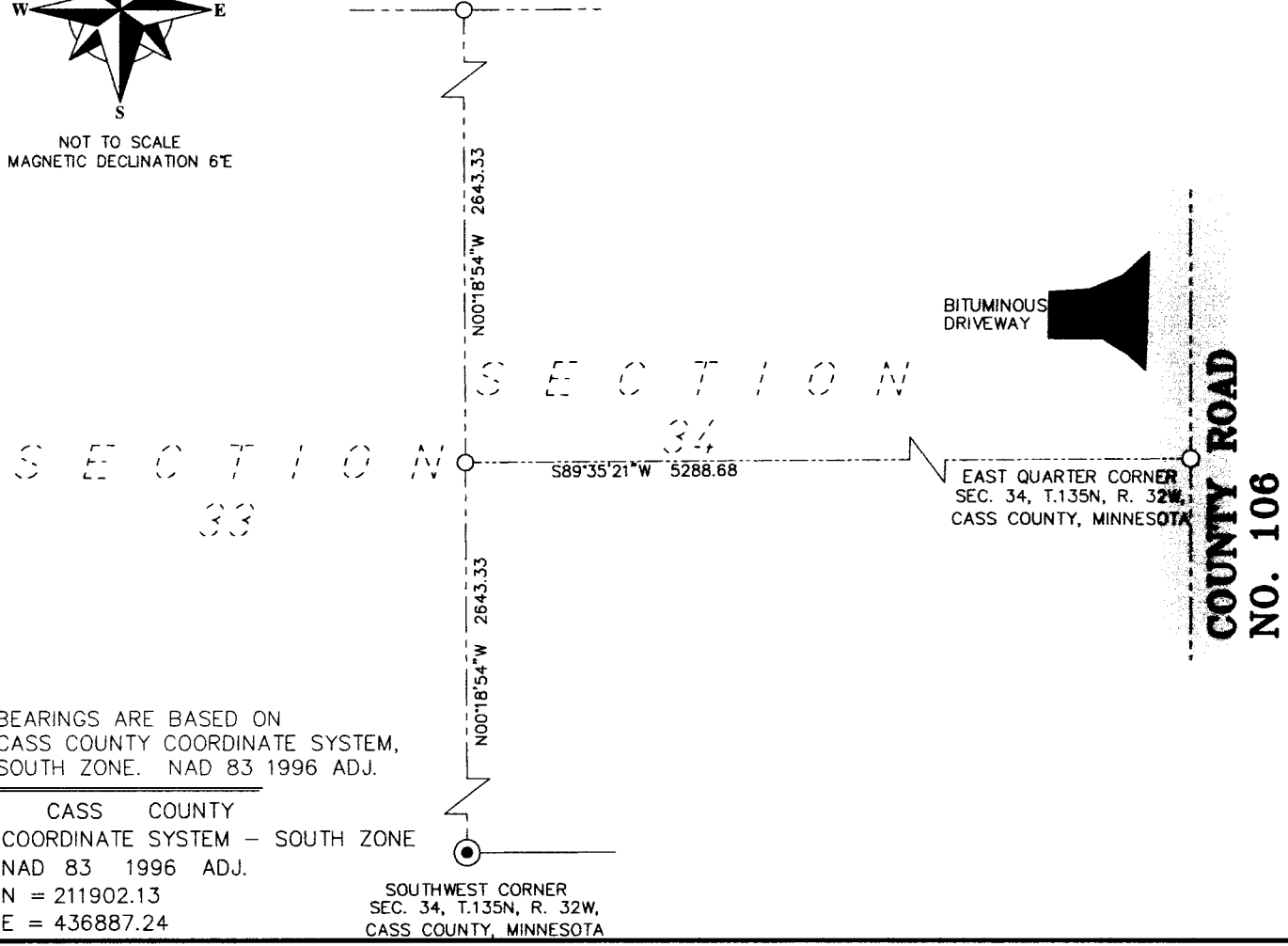
left monument as found, lowered monument, removed monument (explain)

■ On 5-3-11 Placed a 1/2 x 14 INCH IRON PIPE MARKED WITH RLS CAP 17768
DATE
1 INCH ABOVE GROUND



NORTHWEST CORNER
SEC. 34, T.135N, R. 32W,
CASS COUNTY, MINNESOTA

SKETCH OF REFERENCE TIES



BEARINGS ARE BASED ON
CASS COUNTY COORDINATE SYSTEM,
SOUTH ZONE. NAD 83 1996 ADJ.

CASS COUNTY
COORDINATE SYSTEM - SOUTH ZONE
NAD 83 1996 ADJ.
N = 211902.13
E = 436887.24

SOUTHWEST CORNER
SEC. 34, T.135N, R. 32W,
CASS COUNTY, MINNESOTA

Statement of evidence relative to this corner location is on back of page.

I hereby certify that this document and the data contained herein was prepared by me or under my direct supervision.

[Signature] 3/1/2012
Signature Date

License No. 17768

Land Surveyor Professional Engineer
 County Surveyor County Engineer

OFFICE OF THE COUNTY RECORDER
County of CASS

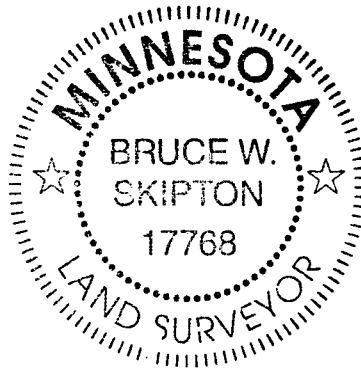
I hereby certify that this document was filed in the County Recorders office at _____ .M. on the _____ day of _____ A.D., 20____

County Recorder _____
By _____, Deputy

DOCUMENT NO. _____

East Quarter Corner, Section 33, Township 135 North, Range 32, Cass County, MN

- 1866 Oscar E. Garrison, GLO Deputy Surveyor, set post with two bearing trees for this corner. Reference ties: 12 inch Tamarac S 66 degrees E .15 chains; 8 inch Tamarac S 79 degrees W .06 chains.
- 5/2011 Arro Land Surveyors search the area for the GLO reference ties and post and found nothing.
- 5/2011 Arro Land Surveyors has determined the position of for this PLS corner to be lost due to the lack of any evidence to relocate its location. We placed an ½ inch iron pipe 14 inches long with RLS 17768 plastic cap at the lost position being on line and midway between the Northwest corner and the Southwest corner of said Section 34. Please note that there were no objects within 150 feet to establish reference ties.



A000578696
OFFICE OF COUNTY RECORDER
CASS COUNTY MINNESOTA
CERTIFIED, FILED, AND/OR
RECORDED ON
03/15/2012 10:27:25 AM
AS DOC #: A000578696
PAGES: 2 REC FEES: 0.00
KATHRYN M. NORBY
COUNTY RECORDER