

CERTIFICATE OF LOCATION OF GOVERNMENT CORNER

NORTHEAST Corner of Section 33, Township 135 N, Range 32 W

5TH Principal Meridian, State of Minnesota, County of CASS

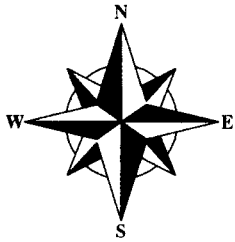
At the corner location shown on the sketch:

On _____ found a _____
DATE

left monument as found, lowered monument, removed monument (explain)

On 5-3-11 Placed a 1/2 x 14 INCH IRON PIPE MARKED WITH RLS CAP 17768
DATE
1 INCH ABOVE GROUND

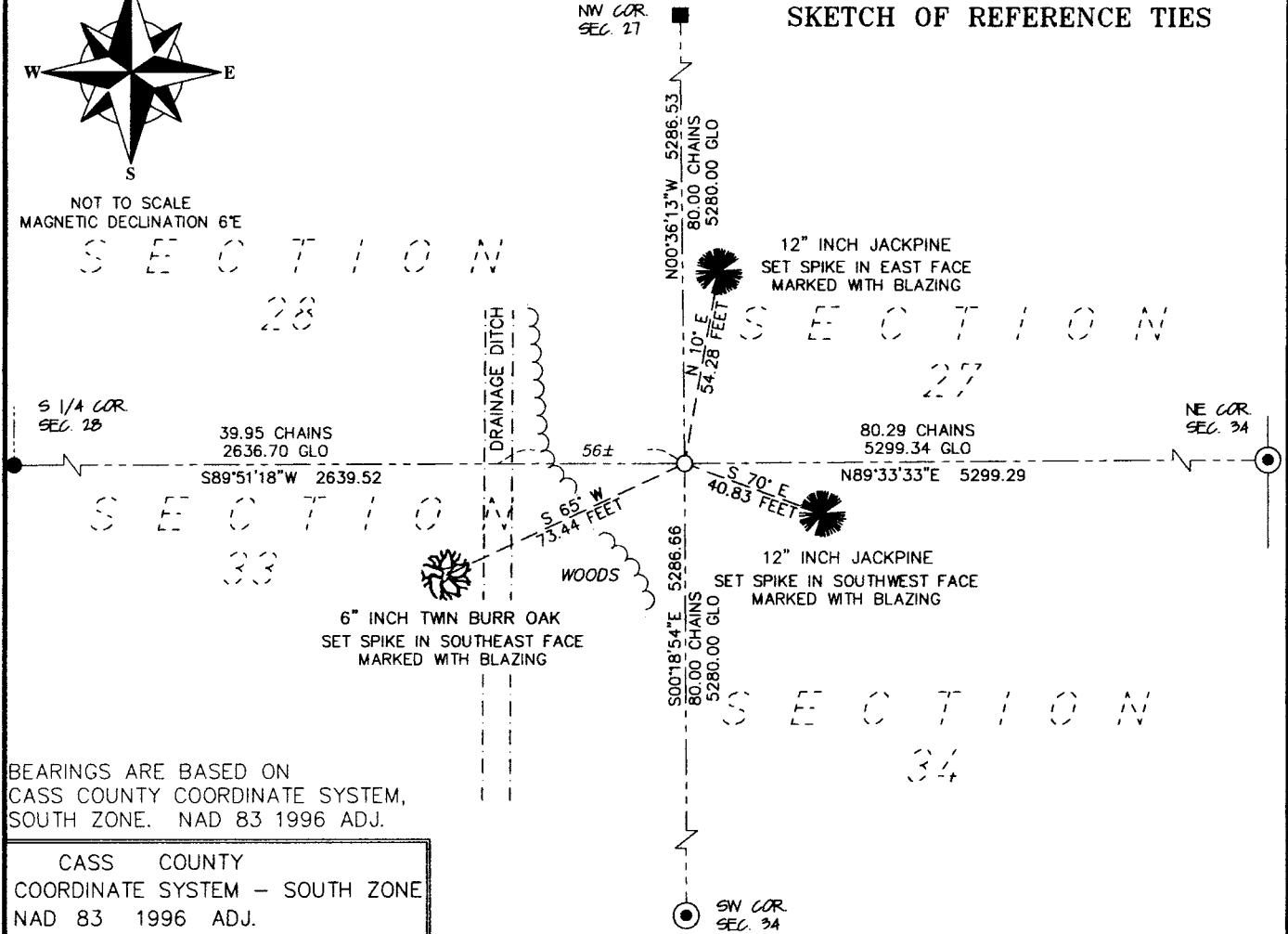
9
8
7
6
5
4
3
2
1
Tx: 4023956



NOT TO SCALE
MAGNETIC DECLINATION 6'E

SECTION
28

SKETCH OF REFERENCE TIES



CASS COUNTY
COORDINATE SYSTEM - SOUTH ZONE
NAD 83 1996 ADJ.
N = 214545.42
E = 436872.71

Statement of evidence relative to this corner location is on back of page.

I hereby certify that this document and the data contained herein was prepared by me or under my direct supervision.

Erwin Christ 3/1/2012
Signature Date

License No. 17768

- Land Surveyor
- Professional Engineer
- County Surveyor
- County Engineer

OFFICE OF THE COUNTY RECORDER
County of CASS

I hereby certify that this document was filed in the County Recorders office at _____ M. on the _____ day of _____ A.D., 20____
County Recorder _____
By _____, Deputy

DOCUMENT NO. _____

Northeast Corner, Section 33, Township 135 North, Range 32, Cass County, MN

- 1866 Oscar E. Garrison, GLO Deputy Surveyor, set post with four bearing trees for this corner. Reference ties: 22 inch White Pine N 65 degrees E .45 chains; 22 inch White Pine S 25 degrees E .35 chains; 24 inch White Pine S 26 degrees W .70 chains; 6 inch White Birch N 82 degrees W .30 chains.
- 1866 The GLO measurements are as follows: NW34-NW27 = 80.00 ch (5280.00 feet); NW34-NE34 = 80.20 ch (5293.20 feet); NW34-SW-34 = 80 ch (5280.00 feet); & NW34-S1/4-28 = 39.95 ch (2636.70 feet).
- 7/1915 RE Bryant, Deputy County Surveyor, survey of a township road , Book C, Page 571, Survey Record 490, states that he found old post badly burned & one BT. Checked to hair for measurement by not very good for course. Curo field book 71, page 84 makes same statement as above. On page 83 shows sketch with a white pine BT drawn to the southwest but labeled S 25 E 35 lks. This sketch also shows a north-south ditch to the east of the post.
- 12/1915 Survey Book C, Page 47, 48 & 49, Survey Record 382 - EB Horst, Deputy County Surveyor states that the land owners have two witness post to the government corner and one BT. True corner is 72 feet west of his random line. His sketch shows a 4 inch by 4 inch by 4 foot long stake and no reference to a ditch.
- 7/1916 Survey Book C, Page 47, 48 & 49, Survey Record 382 - EB Horst states the corner is in a 3 foot ditch and he sets an iron monument for witness 8 feet east of true corner. He measures 5315.6 from the NW-27.
- 5/2011 Arro Land Surveyors search the area for the GLO reference ties, post , EB Horst witness (iron pipe) and found nothing. There was a north-south ditch being 10 feet wide in the vicinity of our search area.
- 5/2011 Arro Land Surveyors concludes that the statements made by Bryant & Horst as to the location of the government corner with the ditch are conflicting. We have determined that the position of for this PLS corner to be lost due to the conflicting statements made by Bryant & Horst and that there was no other evidence to relocate its location. We set a ½ inch by 14 inch iron pipe marked with RLS cap 17768 at the lost position. The lost position was double proportioned from the following found monuments at the NW-27, NE-34, SW-34 & the S ¼ -34. Arro Land Surveyors measurement to the following PLS corners are: NW34 to NW27 = 5286.53 feet; NW34 to NE34 = 5299.29 feet; NW34 to SW34 = 5286.66 feet; & NW34 to S ¼ 28 = 2639.52 feet.

