

CERTIFICATE OF LOCATION OF GOVERNMENT CORNER



I hereby certify that this survey, plan, or report was prepared by me or under my direct supervision and that I am a duly Licensed Land Surveyor under the laws of the State of Minnesota.

Cynthia M. Hidde
 CYNTHIA M. HIDDE

Date: 12-1-11 License No: 44881
 44881

OFFICE OF THE COUNTY RECORDER
 County of CASS

I hereby certify that this document was filed in the Office of the County Recorder at _____ o'clock _____ .M. on the _____ day of _____, 20____ A.D.

County Recorder _____

By: _____, Deputy
 DOCUMENT NO. _____

Northeast _____ Corner of Section 19, Township 139 North, Range 29 West, 5th P.M.

On Nov. 21, 2006 found a bridge spike 0.2' feet below the surface of Highway No. 87

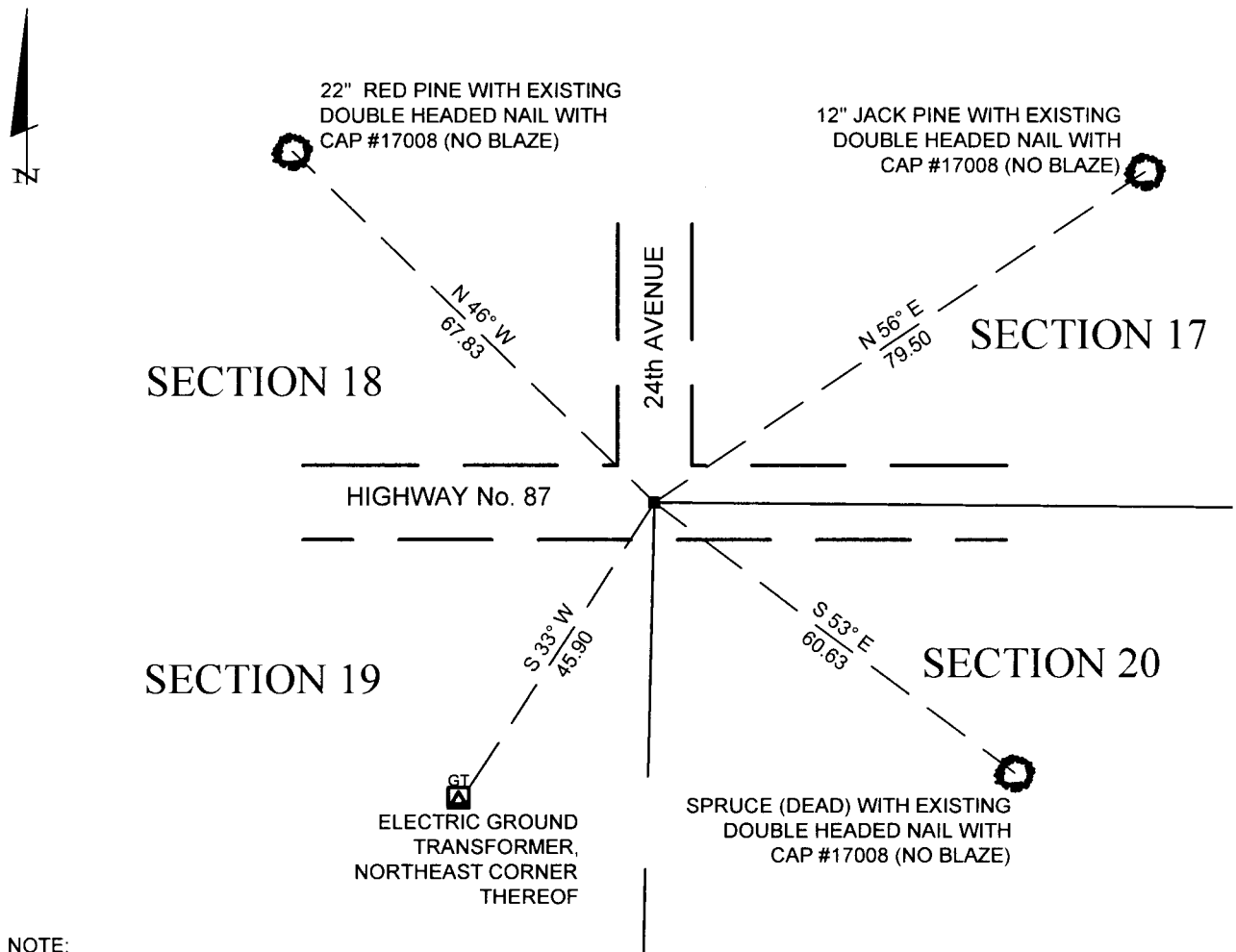
left monument as found, lowered monument, removed monument (explain)

On _____ placed a _____

SKETCH OF REFERENCE TIES

Corner Index: **N-5**

Not to Scale



NOTE:
 ALL DISTANCES SHOWN ARE MEASURED TO THE NAIL AS SET OR FOUND.

Statement of evidence for this corner position is on the back of this page

Statement of Evidence (N-5)

Northeast Corner, Section 19, Township 139 North, Range 29 West, Cass County, Minnesota.

1865 - In accordance with a joint contract dated April 12, 1865, George B. Wright and Thomas B. Walker, deputy surveyors, completed the subdivision of Township 139 North, Range 29 West, 5th Principle Meridian, in August, 1865. The subdivision and map was subsequently approved on February 13, 1866 by the U. S. Surveyor General's Office. The referenced wood post government corner was set as noted from which:

12" Black Pine	N63°W	132 Lks (87.12 feet)
10" Black Pine	S86°30'W	73 Lks (48.18 feet)
10" Dead Pine	N30°E	44 Lks (29.04 feet)
9" Dead Pine	S57°E	25 Lks (16.50 feet)

1912 - John W. Curo - Township road order shows survey.

1912 - John W. Curo found original government bearing trees: NW stump and roots of other stumps, recording information on pages 200-211 in County Survey Record Book "B".

5" Jack Pine	S45°14'W	75.68 feet
6" Jack Pine	S56°18'E	83.02 feet

1916 - A.W. Nowak found corner and recorded on page 605 in County Survey Record Book "B".

1918 - E. B. Horst found corner for Curo's bearing tree: 6" Jack Pine, S56°18'E. Set 8" bolt for corner.

Jack Pine	N73°45'W	193 feet
Telephone Pole	S62°05'W	57.8 feet

1927 - Survey of corner recorded on page 61 in County Ditch Survey Book 160, Box 3 of County Ditch Survey Books.

1980 - David Landecker found PK corner and recorded the following ties therefrom:

Nail in side of Spruce	Southeast	60.80 feet
Nail in side of Willow	Southeast	46.13 feet
NE corner of Elec. Jct. Box	Southwest	45.83 feet
Nail in telephone pole	Northwest	43.84 feet
Nail in side of Jack Pine	Northwest	40.26 feet

Landecker & Associates, Inc. files contain a calculated breakdown of Section 20, including subject corners.

2000 - Terry L. Freeman found corner and showed on recorded plat of STONEBACK WOODS.

2001 - Cass County Surveyors Office found bridge spike down 0.2 feet (1 foot, more or less, North of centerline of Highway #87 on centerline of 20th Avenue).

16" Balsam	S52°E	60.58 feet (nail and disk)
6" Norway Pine	S27°W	63.12 feet (to double-headed nail)
8" Spruce	N50°W	61.73 feet (to double-headed nail)
5" Jack Pine	N36°E	57.13 feet (to double-headed nail)

2003 - Jarrett Leas #42619 showed monument set on Certificate of Survey.

2006 - Cynthia M. Hidde, RLS #44881, Landecker & Associates, Inc., weighs the evidence surrounding the location of the found existing monument and determines it to be a perpetuation of the original corner from which:

22" Red Pine with existing double headed nail with cap 17008 (no blaze)	N46°W	67.83 feet
12" Jack Pine with existing double headed nail with cap 17008 (no blaze)	N56°E	79.50 feet
Spruce (dead) with existing double headed nail with cap 17008 (no blaze)	S53°E	60.63 feet
Electric Ground Transformer (NE corner thereof)	S33°W	45.90 feet

A000578688

**OFFICE OF COUNTY RECORDER
CASS COUNTY MINNESOTA
CERTIFIED, FILED, AND/OR
RECORDED ON
03/15/2012 10:27:17 AM
AS DOC #: A000578688
PAGES: 2 REC FEES: 0.00
KATHRYN M. NORBY
COUNTY RECORDER**