

# CERTIFICATE OF LOCATION OF GOVERNMENT CORNER

Northeast corner of Section 1, Township 141 N., Range 29 W., 5th P.M.  
 State of Minnesota, County of Cass

At the corner location shown on the sketch:

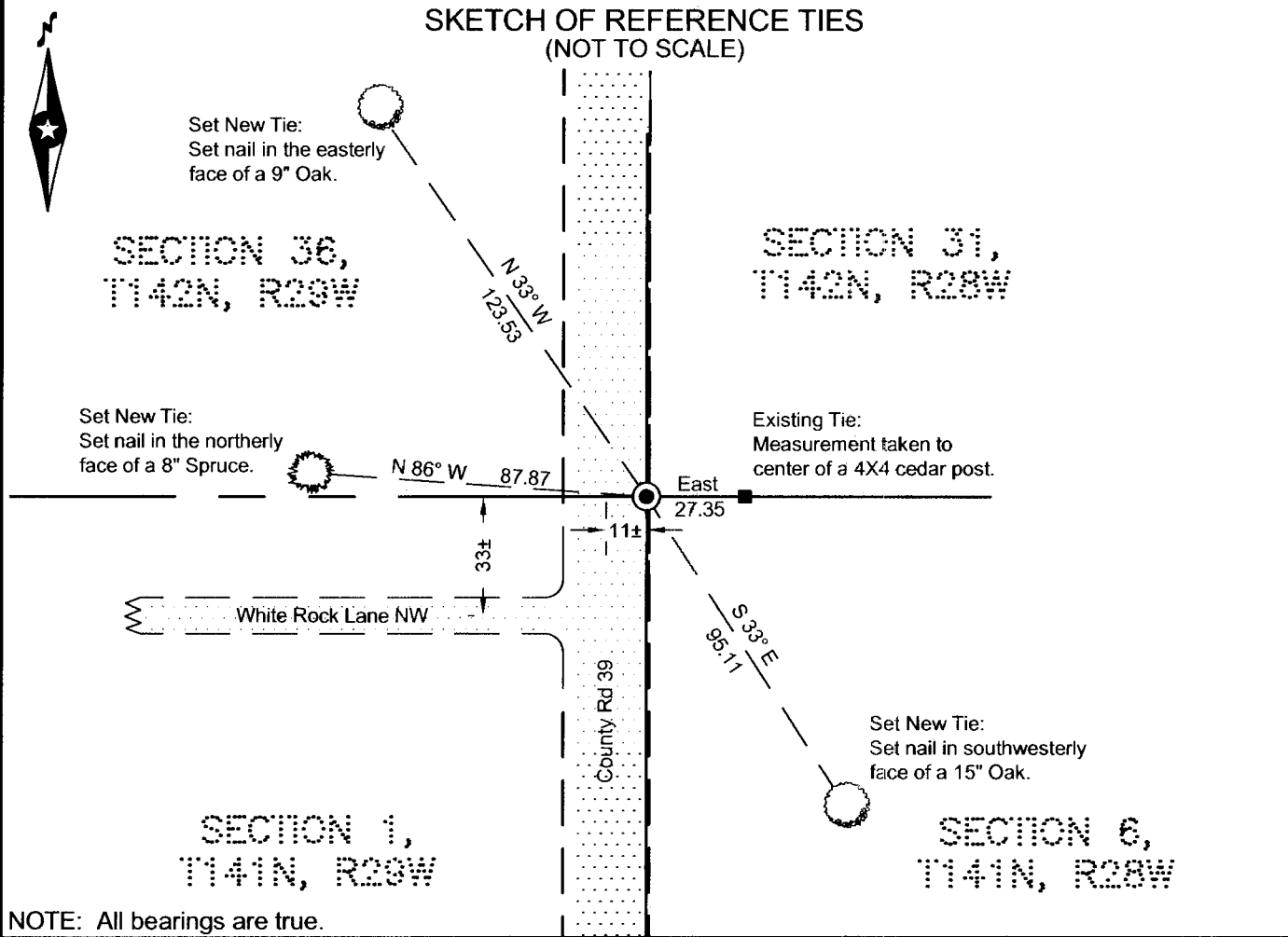
On 3-21-11 found a 3" brass cap in a 6" diameter concrete cylinder,  
 3" below surface grade of bituminous.

left monument as found     lowered monument     removed monument (explain)

On \_\_\_\_\_ placed \_\_\_\_\_



## SKETCH OF REFERENCE TIES (NOT TO SCALE)



Statement of evidence relative to this corner location is on the back of this page.

I hereby certify that this survey, plan, or report was prepared by me or under my direct supervision and that I am a duly Licensed land Surveyor under the laws of the State of Minnesota. I further certify that this United States public land survey monument record is correct and complete to the best of my knowledge and belief.

Terry L. Freeman, Land Surveyor

Date 12/9/11 MN License No. 21367

**A000578313**  
**OFFICE OF COUNTY RECORDER**  
**CASS COUNTY MINNESOTA**  
**CERTIFIED, FILED, AND/OR**  
**RECORDED ON**  
**03/01/2012 2:29:49 PM**  
**AS DOC #: A000578313**  
**PAGES: 2 REC FEES: 0.00**  
**KATHRYN M. NORBY**  
**COUNTY RECORDER**

Index No.     A.0 - 25.0    

**STATEMENT ON EVIDENCE**

**Northeast Corner of Section 01, Township 141 North, Range 29 West of the 5th Principal Meridian.**

In 1873, P.H. Conger, U.S. Deputy Surveyor, set a wood post in place to mark the location of this corner and established bearing trees as follows: a 6" W. Birch, S45°W 23 links; a 5" W. Birch, S25°W 25 links; a 14" W. Oak, N5°E 22 links; a 10" W. Oak, S20°W 18 links.

1903 - 1904, U.S. Army Corps of Engineers map for the Leech Lake Reservoir shows corner found by surveyor Horace Dunaway. A copy of the map is on file in the Cass County Survey Department.

On October 28, 1915, E.B. Horst, Deputy County Surveyor, found: the original 5"x5"x4" post (rotted), both Oak BTs (down) and both Birch BTs (rotted stumps). He set a 2 1/2" x 48" iron pipe with cap and established new bearing trees as follows: a 7" Popple, N15°30'W, 55'; a 4" Birch, S7°30'E, 28'; a 24" W. Pine stump, S54°30'W, 38'. (Curo book #60, page 142 and Cass County Record #263 Book B, pages 169-177)

In 1916, John Curo, Cass County Surveyor, found the previously established iron monument. (Cass County Record #263 Book B, pages 102-104) (also Curo Book 54B, Pg. 45)

In 1916, John Curo, Cass County Surveyor, and E.B. Horst, Deputy County Surveyor, found the previously established iron monument. (Cass County Record #318 Book B, pages 391-398 and Curo Book 60, Pg. 142)

In 1918, E. G. Harrington, United States Cadastral Engineer, made a dependent resurvey of a portion of T141N, R29W, and found a 2" dia. Galvanized iron pipe and remains one of the original BTs as follows: a 16" Oak stump, N5°E, 22 links. He set a 3" dia. x 36" iron post with brass cap, and established four new bearing trees as follows: a 12" Norway Pine, N53°E, 517 links; a 10" Red Oak, S63°E, 325 links; a 14" Red Oak, S68°45'W, 426 links; a 5" Poplar, N29°30'W, 114 links. (Running notes on file in Cass County Survey Department)

On July 29, 1939, John Curo, Cass County Surveyor, found remains of the old iron strewn in ditch and no U.S. BTs. He relocated the corner from old notes and set an iron in the road and established six new BTs as follows: a 5" Twin Tamarack, N59°37'E, 148.30'; a 8" Burr Oak, N62°13'E, 133.50'; a 24" White Pine stump, S28°02'W, 70.65'; a 10" Birch, S26°47'W, 69.10'; a 30" White Pine stump, S36°40'E, 89.95'; a 7" White Oak, S54°55'E, 56.35'. (Cass County Record #559 Book D, page 219)

In 1972, W. Okerman, a U.S. Forest Surveyor, found old BTs and reset the corner with a 5 1/2" x 5 1/2" x 24" concrete monument with brass cap and established three new bearing ties as follows: a 11" White Oak, S65°E, 206.50'; a 11" Red Oak, N62°W, 132.50'; a 4"x4"x72" cedar post, East, 26.70'. Information on file in U.S.F.S. Cass Lake office T141N R28W Book 3, Pg. 57.

In 1989, W. F. Buckler, RLS 9672, recorded a plat: LEECH LAKE HOMESITES as doc #A000314027. The plat shows corner found easterly of road.

On March 21, 2011, a Northern Engineering & Consulting survey crew found a 3" brass cap in a concrete cylinder, 3" below surface grade of bituminous. One existing tie was found and three new ties were set as shown on the front page of this certificate. Concrete monument with brass cap is accepted as a perpetuation of the original corner.

**Minnesota State Plane (Central Zone)**

Northing 1082395.970  
Easting 2614869.458

**County Coordinates (Cass County North)**

Northing 196623.383  
Easting 481894.782

