

CERTIFICATE OF LOCATION OF GOVERNMENT CORNER

Northeast corner of Section 24, Township 143 N., Range 29 W., 5th P.M.
State of Minnesota, County of Cass

At the corner location shown on the sketch:

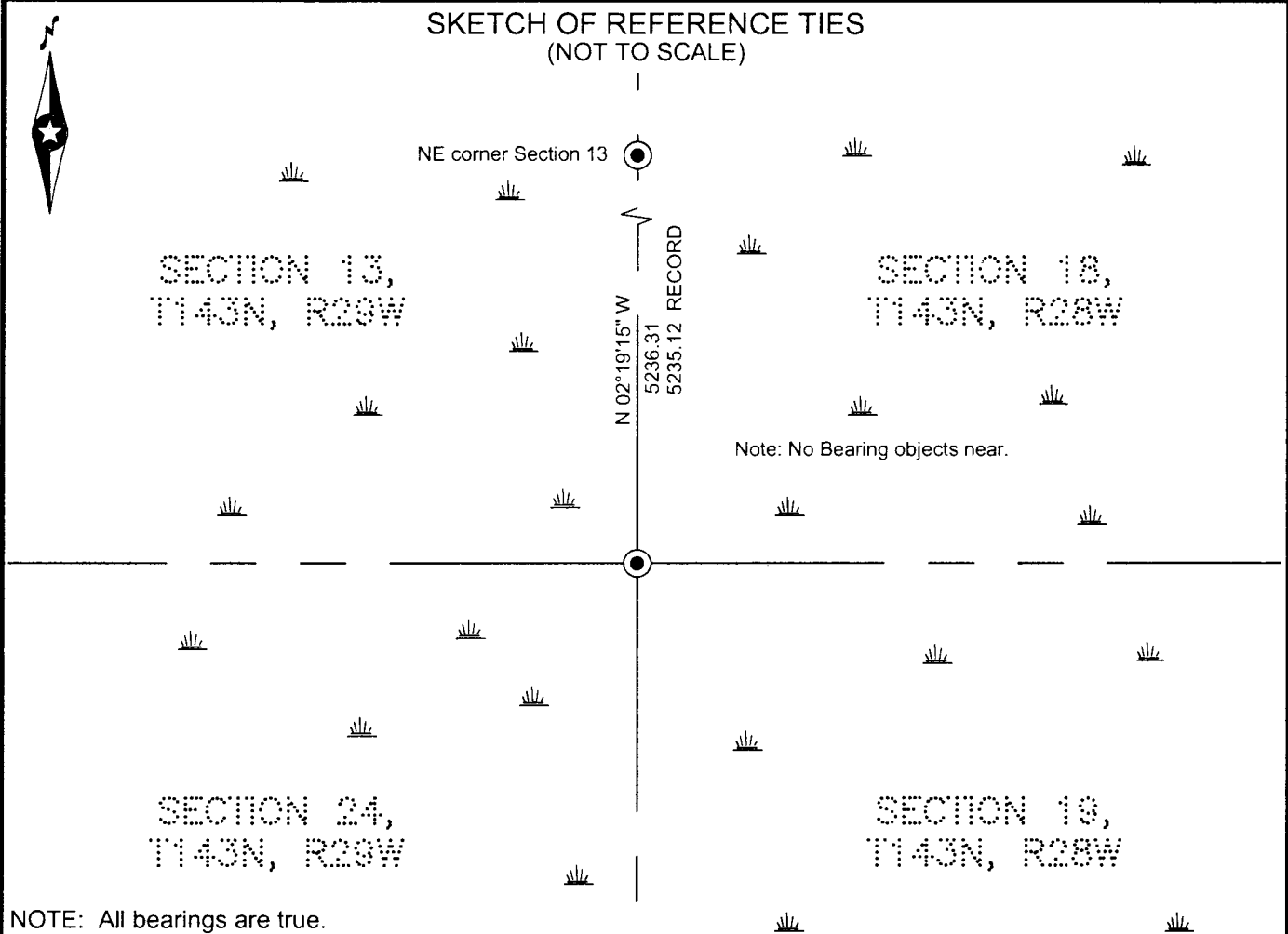
On 06-30-2011 found a 2" iron pipe with a 2.5" diameter G.L.O. brass cap,
lying down under the surface of the water, placed upright, up 8".

left monument as found lowered monument removed monument (explain)

On _____ placed _____



SKETCH OF REFERENCE TIES (NOT TO SCALE)



NOTE: All bearings are true.

Statement of evidence relative to this corner location is on the back of this page.

I hereby certify that this survey, plan, or report was prepared by me or under my direct supervision and that I am a duly Licensed land Surveyor under the laws of the State of Minnesota. I further certify that this United States public land survey monument record is correct and complete to the best of my knowledge and belief.


Terry L. Freeman, Land Surveyor

Date 2/28/12 MN License No. 21367

A000578302
OFFICE OF COUNTY RECORDER
CASS COUNTY MINNESOTA
CERTIFIED, FILED, AND/OR
RECORDED ON
03/01/2012 2:29:38 PM
AS DOC #: A000578302
PAGES: 2 REC FEES: 0.00
KATHRYN M. NORBY
COUNTY RECORDER

Index No. N.O - 25.0

STATEMENT ON EVIDENCE

Northeast Corner of Section 24, Township 143 North, Range 29 West of the 5th Principal Meridian.

In **1873**, P.H. Conger, U.S. Deputy Surveyor, set a wood post in place to mark the location of this corner and established bearing trees as follows: a 5" Tamarack, N20°W 16 links; a 7" Tamarack, S60°W 22 links; a 6" Tamarack, N70°E 12 links; and a 5" Tamarack, S20°E 30 links.

In **1918**, Albinus N. Kimmell, U.S. Cadastral Engineer, set a 2x36" iron pipe with a brass cap at the lost position while marking the East Township line, and established bearing trees as follows: a 5" Poplar, N27-3/4°E 57 links; a 5" Poplar, N17-3/4°W 116 links; a 5" Poplar, S52-1/4°W 198 links; and a 6" Poplar, S8°E 186 links. Information on file in the Cass County Surveyors office.

In **1933**, John M. Greene, Deputy County Surveyor working in area, shows a sketch as part of 1918 resurvey plat and shows a corner in place. Information is on file in the Cass County Survey Department recorded in Curo book 54B, page 140.

In **1974**, The Cass County Highway Department while working on County Road No. 73 found a 2" iron monument. Information on file in the Cass County Surveyors office.

On **April 23, 1986**, Freeman and Hummitesch found the 2" iron monument with a brass cap near the edge of swamp. Information on file in the Cass County Surveyors office.

In **June 2011**, a Northern Engineering & Consulting survey crew found a 2" iron pipe with a 2.5" diameter G.L.O. brass cap lying under the surface of the water, they placed in an upright position. No objects near for ties. Brass cap accepted as corner position established by GLO in 1918.

Minnesota State Plane (Central Zone)

Northing 1129592.543
Easting 2615912.342

County Coordinates (Cass County North)

Northing 243821.492
Easting 482958.117

