

# CERTIFICATE OF LOCATION OF GOVERNMENT CORNER

Northeast corner of Section 05, Township 143 N., Range 29 W., 5th P.M.  
State of Minnesota, County of Cass

At the corner location shown on the sketch:

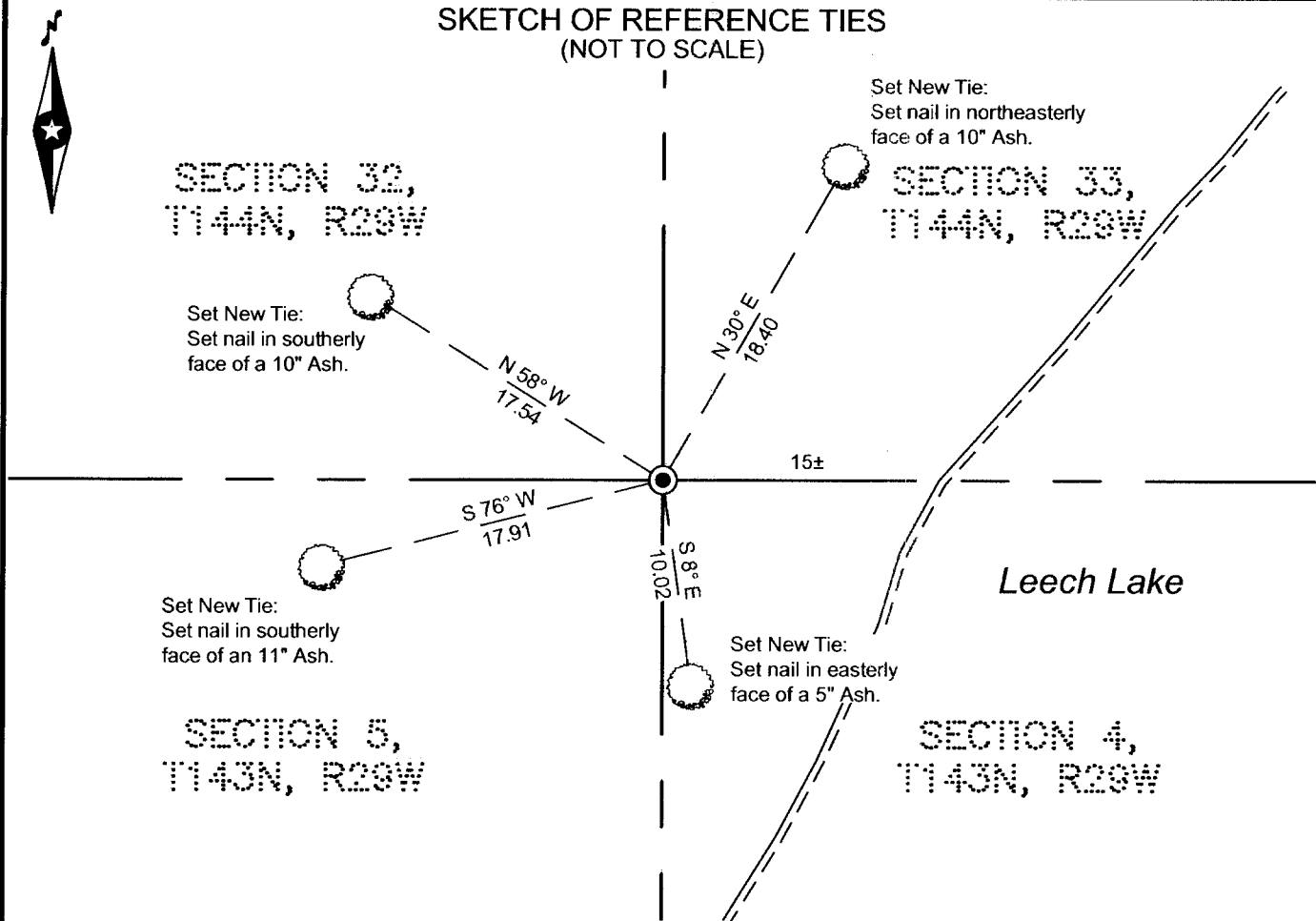
On 06-16-2011 found a 4" diameter pipe filled with concrete with a screw in the center,  
flush with the surface grade.

left monument as found     lowered monument     removed monument (explain)

On \_\_\_\_\_ placed \_\_\_\_\_



## SKETCH OF REFERENCE TIES (NOT TO SCALE)



NOTE: All bearings are true.

Statement of evidence relative to this corner location is on the back of this page.

I hereby certify that this survey, plan, or report was prepared by me or under my direct supervision and that I am a duly Licensed land Surveyor under the laws of the State of Minnesota. I further certify that this United States public land survey monument record is correct and complete to the best of my knowledge and belief.

Terry L. Freeman, Land Surveyor

Date 12/9/11 MN License No. 21367

**A000578297**  
**OFFICE OF COUNTY RECORDER**  
**CASS COUNTY MINNESOTA**  
**CERTIFIED, FILED, AND/OR**  
**RECORDED ON**  
**03/01/2012 2:29:33 PM**  
**AS DOC #: A000578297**  
**PAGES: 2 REC FEES: 0.00**  
**KATHRYN M. NORBY**  
**COUNTY RECORDER**

Index No.     A.0 - 9.0    

**STATEMENT ON EVIDENCE**

**Northeast Corner of Section 5, Township 143 North, Range 29 West of the 5th Principal Meridian.**

In 1873, P.H. Conger, U.S. Deputy Surveyor, set a wood post in place to mark the location of this corner and established bearing trees as follows: a 5" Cedar, N85°E 72 links; a 12" Cedar, N79°W 55 links; a 7" Cedar, S87°W 83 links; and an 8" Cedar, S87°E 49 links.

1900 - 1904, U.S. Army Corp of Engineers map for the Leech Lake Reservoir shows corner found by surveyor Horace Dunaway. A copy of the map is on file in the Cass County Survey Department.

In 1907, John Curo, Cass County Surveyor, found the old government bearing trees; a 15" Cedar, N85°E 48.2 feet; a 12" Cedar, N79°W 36.3 feet; a 7" Cedar S87°W 54.8 feet; and an 8" Cedar, S87°E 32.3 feet. Information on file in the Cass County Surveyors office Book A, Pg. 254-255.

In 1916, A. Nowack, while surveying for the Federal Dam-Sugar Point road, mentions corner. (Information in Cass County Survey Department, in Curo book 54B, pages 96 and 99).

In 1923, Horace Dunaway found the 12" Cedar BT down. He set a 4" iron in a 3" square concrete block. He established bearing trees as follows: an 8" Cedar, N55°20'E 188 feet; and a 14" Spruce, N31°45'W 295.4 feet. Information on file in the Cass County Surveyors office, in Curo book 187, page 5.

In 1924, Earl G. Harrington, U.S. Cadastral Engineer found a 3" diameter iron pipe filled with concrete in a 18" square concrete base. He also found an original bearing tree: 14" Cedar N79°W 55 links (down). He established new bearing trees as follows: an 8" Poplar, N81°E 167 links; and a 10" Poplar N33°45'W 185 links. Information on file in the Cass County Surveyors office.

On June 16, 2011, a Northern Engineering & Consulting survey crew found a 4" diameter pipe filled with concrete with a screw in the center, flush with the surface grade. Four new ties were set as shown on the front page of this certificate. Found monument accepted as a perpetuation of the original corner.

**Minnesota State Plane (Central Zone)**

Northing 1144177.435  
Easting 2596836.49

**County Coordinates (Cass County North)**

Northing 258415.063  
Easting 463888.244

