

CERTIFICATE OF LOCATION OF GOVERNMENT CORNER

Northeast corner of Section 04, Township 145 N., Range 30 W., 5th P.M.
 State of Minnesota, County of Cass

At the corner location shown on the sketch:

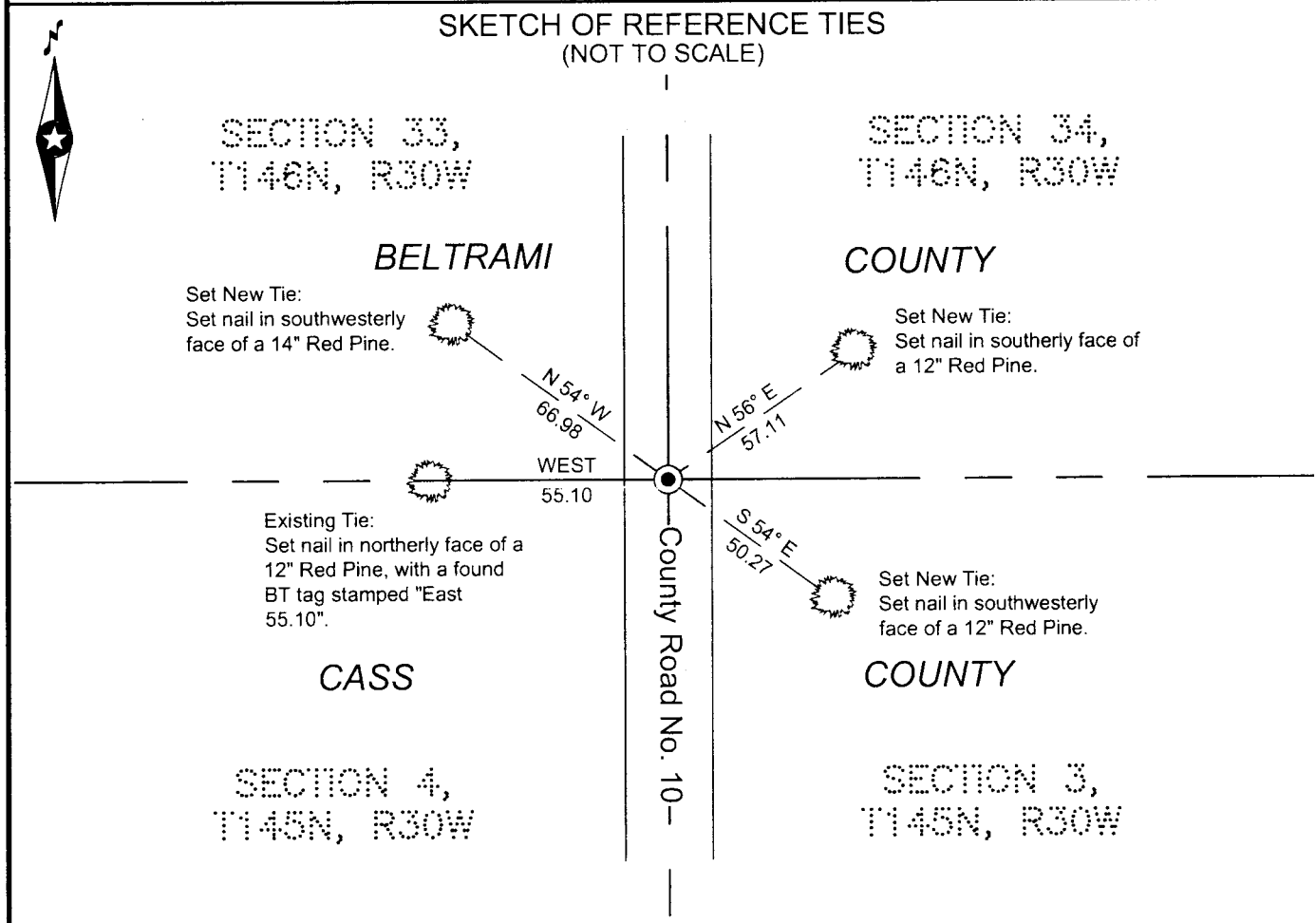
On 06-02-2011 found _____ a cast iron monument, 6" below surface grade.

left monument as found lowered monument removed monument (explain)

On _____ placed _____



SKETCH OF REFERENCE TIES (NOT TO SCALE)



NOTE: All bearings are true.

Statement of evidence relative to this corner location is on the back of this page.

I hereby certify that this survey, plan, or report was prepared by me or under my direct supervision and that I am a duly Licensed land Surveyor under the laws of the State of Minnesota. I further certify that this United States public land survey monument record is correct and complete to the best of my knowledge and belief.



 Terry L. Freeman, Land Surveyor
 Date 2/28/12 MN License No. 21367

A000578275
OFFICE OF COUNTY RECORDER
CASS COUNTY MINNESOTA
CERTIFIED, FILED, AND/OR
RECORDED ON
03/01/2012 2:29:11 PM
AS DOC #: A000578275
PAGES: 2 REC FEES: 0.00
KATHRYN M. NORBY
COUNTY RECORDER

Index No. A.0 - 13.0

STATEMENT ON EVIDENCE

NE Corner of Section 04, Township 145 North, Range 30 West of the 5th Principal Meridian.

In 1873, P.H. Conger, U.S. Deputy Surveyor, set a wood post in place to mark the location of the section corner and established bearing trees as follows: a 7" Jack Pine, N53°E 36 links; a 12" Jack Pine, N82°W 46 links; .
an 8" Jack Pine, S13°W 23 links; a 12" Jack Pine, S51°E 10 links.

In 1914, E.J. Bourgeois established new bearing trees as follows: an 8" Jack Pine, N29°E 46.6'; a 12" Jack Pine, S61°E 39.9'.
Information on file in Beltrami County survey records 3-A1, roll #1.

In 1929, Field Notes for SAR #10 in Cass County Survey Department, shelf 1, Book 167, page 4, shows reference points as follows: an 8" Jack Pine, SW 35.0'; a 5" Oak, NW 73.9'.

In 1930, Field Notes for Cass Lake-Blackduck Road in Cass County Survey Department, shelf 3, Book 168, page 2, shows corner and reference points as follows: an 8" Jack Pine, SW 35.0'; a 5" Oak, NW 73.9'.

In 1931, R.A. Dahms established new bearing trees as follows: an 8" Jack Pine, SW 35.0'; a 5" Oak, NW 73.9'. Information on file in Beltrami County survey records 4-D5, roll #1.

In 1933, H. Craig, United States Cadastral Engineer, found no remaining evidence and reset the corner by proportionate distance. He set a 6" dia. x 24" concrete monument with a 3 1-2" dia. brass tablet, 4" below the surface of Black Duck Road, and established a new bearing tree as follows: a 3" Red Oak, N59 1/2°E 52 links; a 4" Jack Pine, S48°E 84 links; a 14" Norway Pine, S84 1/2°W 299 links; a 12" Jack Pine, N11° 40'W 331 links (Running notes on file in Cass County Surveyor's Office).

On May 29 & 30, 1980, U.S.F.S. personnel Krause, Schoonover, and Hayes found concrete cylinder (brass cap missing) down 1.8' below road surface and 1933 BT: a 2" N. Pine, S84°W 197.7 feet w/scar marks. Marked new BT's: a 10" Jack Pine, S44°E 94.78 feet; a 10" Jack Pine, N46°E 87.45 feet; a 10" Jack Pine, S53°W 89.70 feet; and a 10" Jack Pine, N52°W 103.17 feet; and put a F.S.L.P. on a 4" Red Pine, West 55.10 feet. Notes on file in U.S.F.S. Cass Lake office on Corner Report.

On September 18, 1980, a Beltrami County survey crew found a 6" x 13" round cement monument with broken top and a stove pipe around it, down 22" in road centerline. They set a 20" cast iron monument over cement monument and recorded four new ties: a 10" Jack Pine, S54°W 89.70 feet; a 10" Jack Pine, N52°W 103.19 feet; a 10" Jack Pine, N49°E 87.47 feet; and a 9" Jack Pine, S41°E 94.79 feet. Information on file in the Beltrami County survey records FB 800048.

February 2001, the Cass County Surveyors office found brass cap flush 1 foot west of centerline of County Road No. 10 and 1980 BT's. Information on file in the Cass County Surveyors office.

On April 11, 2011, a Northern Engineering & Consulting survey crew found the cast iron monument down 6" just west of centerline and one existing tie: a 12" Red Pine, West 55.10 feet with a BT tag by CK (U.S.F.S.) dated 4-30-80. Three new ties were set as shown on the front page of this certificate. Found cast iron monument is accepted as a perpetuation of the corner re-established in 1933 by the GLO.

Minnesota State Plane (Central Zone)

Northing 1207702.999
Easting 2567744.611

County Coordinates (Cass County North)

Northing 321953.596
Easting 434825.327