



COUNTY RECORDER 03
TX:4023348

A000578268

**OFFICE OF COUNTY RECORDER
CASS COUNTY MINNESOTA
CERTIFIED, FILED, AND/OR
RECORDED ON
03/01/2012 2:29:04 PM
AS DOC #: A000578268
PAGES: 2 REC FEES: 0.00
KATHRYN M. NORBY
COUNTY RECORDER**

I HEREBY CERTIFY THAT THIS DOCUMENT AND THE DATA CONTAINED HEREIN WAS PREPARED BY ME OR UNDER MY DIRECT SUPERVISION.

Bruce W. Skipton 6/22/2010
Bruce W. Skipton DATE

LICENSE NO. 17768

LAND SURVEYOR PROFESSIONAL ENGINEER
 COUNTY SURVEYOR COUNTY ENGINEER

NAD 1983 CASS COUNTY COORDINATES - 1996 ADJ.
N= 121031.11 FEET E= 546860.72 FEET

CERTIFICATE OF LOCATION OF GOVERNMENT CORNER

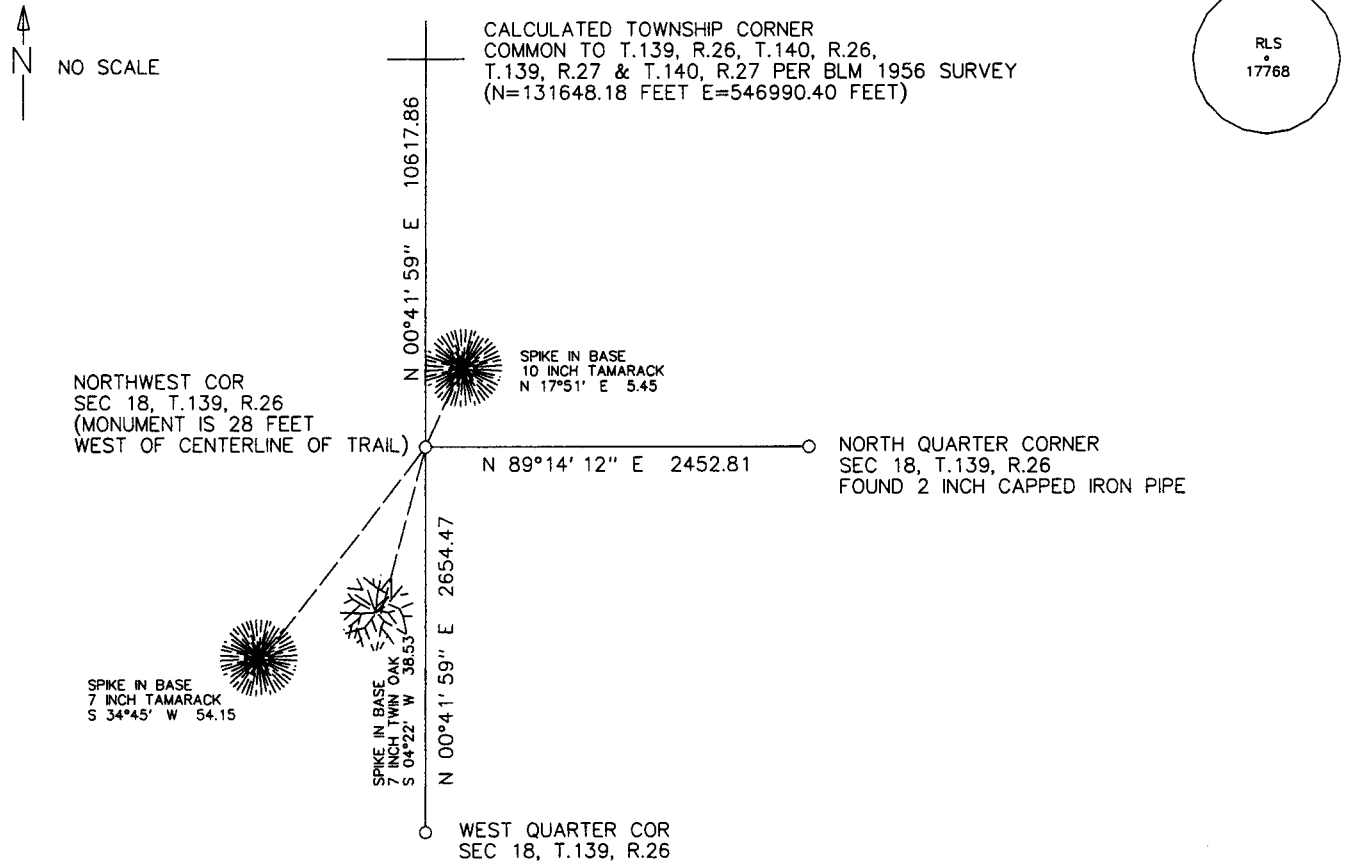
INDEX NO. J-1, NORTHWEST CORNER OF SECTION 18, TOWNSHIP 139, RANGE 26, 5TH P.M.
STATE OF MINNESOTA, COUNTY OF CASS

AT THE CORNER LOCATION SHOWN ON THE SKETCH:

- ON _____ DATE FOUND A(N) _____
- LEFT MONUMENT AS FOUND, LOWERED MONUMENT, REMOVED MONUMENT (EXPLAIN)
- ON APRIL 26, 2010 DATE PLACED A(N) 1/2 INCH BY 14 INCH IRON PIPE MARKED WITH PLASTIC CAP RLS 17768

SKETCH OF REFERENCE TIES

MONUMENT MARKED:



STATEMENT OF EVIDENCE RELATIVE TO THIS CORNER LOCATION IS ON BACK OF PAGE

NORTHWEST CORNER SEC. 18, T. 139, R. 26, 5TH P.M.

- 12/11/1863 The United States Public Land Survey - Original Survey was performed by Johnson & Thornton for the township lines and the subdivision for sections.
- 9/20-24/1956 The Bureau of Land Management performed an island survey in Lake George (Sections 1 & 6, Township 139, Ranges 26 & 27) which was omitted by the original survey. The island survey was surveyed by Hugh B. Crawford under special instructions for Group 83, Minnesota, dated July 16th, 1956. This survey located the common quarter corner to Sec. 31, T. 140, R. 26 & Sec. 36, T. 140, R. 27. From this quarter corner Mr. Crawford established the township corner common to T. 139, R. 26, T. 139, R. 27, T. 140, R. 26 & T. 140, R. 27. (this location was within the water boundaries of Lake George). From the location of the township corner they proceeded South and set meander corners using government brass monuments near the north & south shores of the island.
- 3/2008-4/2008 Cass County Survey Department determined a search area for the northwest corner of Sec. 18 and found a wood stake. No other evidence was located. The wood stake was not old enough to be the wood stake set by the original surveyor. The department also gathered locations of the low area that surrounded the location of this section corner as indicated in the original survey field notes.
- 4/26/2010 Arro Land Surveyors, LLC determined a search area for this corner using the lost corner method (single proportionate) from the location of the common quarter corner to Sec. 31, T. 140, R. 26 & Sec. 36, T. 140, R. 27 and the government brass monument found for the north meander corner of the island to established the township corner determined in the 9/1956 island survey. The 1956 measured between the afore-mention quarter corner to the found north island meander corner was 3028.74 feet (45.89 ch) and Arro's measured distance was 3027.01 feet. The township corner was then established proportionate distance 2647.73 from said common quarter corner to the north island meander corner. From our established township corner we ran a line to the southwest monumented corner to Section 18 which measured 15,926.79 feet (original survey measurement was 15,840.00 feet-240 ch). We searched this area for remnants of the accessories (bearing trees) established by the original survey and found nothing. We did verify the location of the wood post and low area locations by the Cass County Survey Department. Our search location did fall within the low area as indicated by the original survey. Since our search found no evidence of the post or bearings trees from the original survey we determined the location of this corner using the lost corner method (single proportionate) as described above. We sent a ½ inch iron pipe 14 inches long with plastic cap marked "RLS 17768 distant 5308.93 feet north of the monument southwest corner of Section 18 on line with the above established township corner. Bearing trees are noted on the front.