

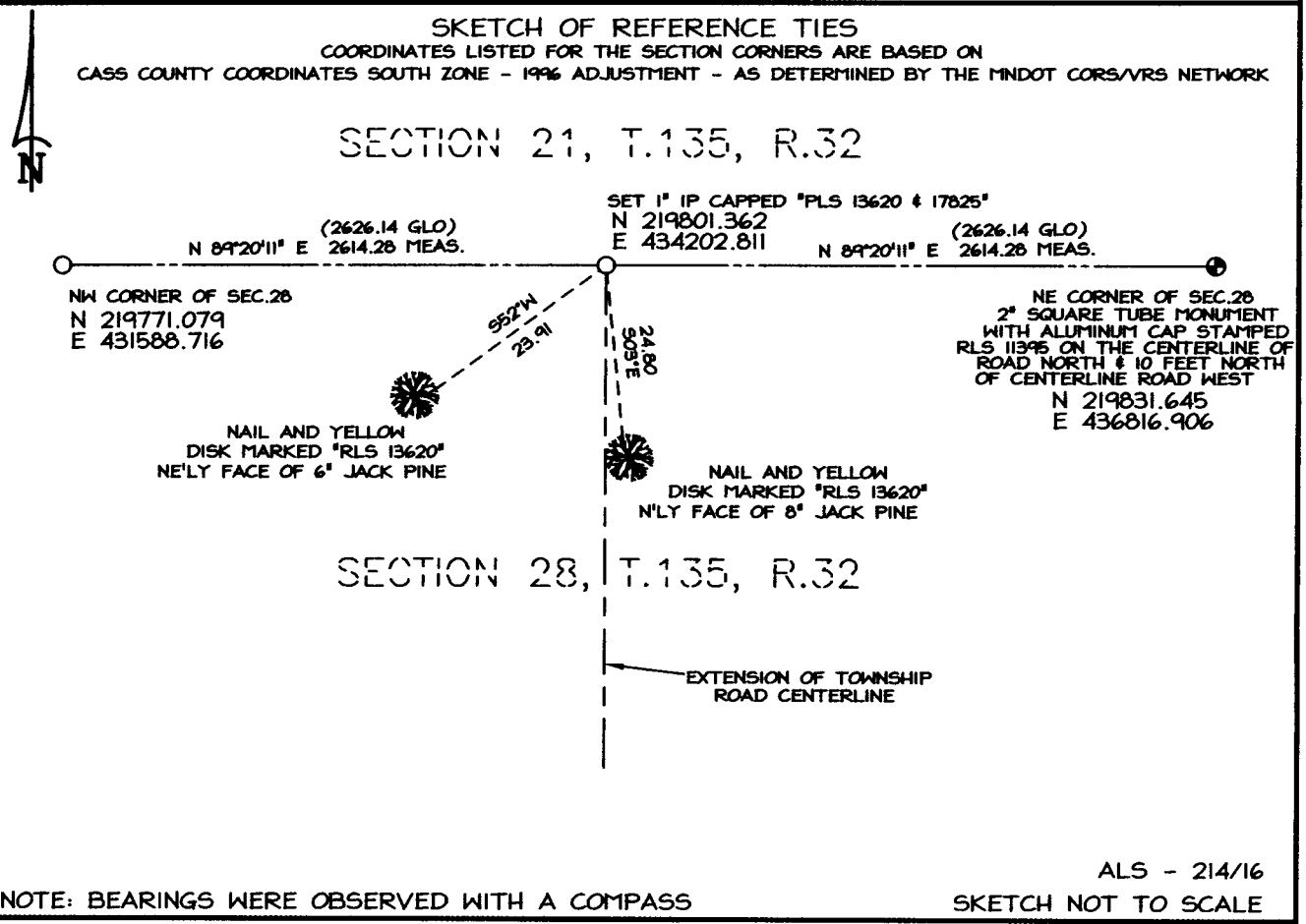
# CERTIFICATE OF LOCATION OF GOVERNMENT CORNER

NORTH QUARTER Corner of Section 28, Township 135N., Range 32W., 5th P.M.

STATE OF MINNESOTA, County of CASS

At the corner location shown on the sketch:

- On \_\_\_\_\_ found a \_\_\_\_\_
- left monument as found  lowered monument  removed monument (explain)
- On 11/10/2010 placed a 1" DIA. IRON PIPE CAPPED "PLS 13620 & 17825"



STATEMENT OF EVIDENCE RELATIVE TO THIS CORNER LOCATION IS ON BACK OF PAGE

I hereby certify that this document and the data contained herein was prepared by me or under my direct supervision.

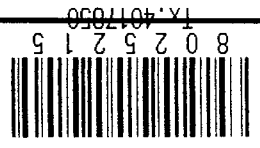
*David A. Anderson*  
 DAVID A. ANDERSON  
 Professional Land Surveyor  
 Minn. Reg. No. 13620

11/3/2011  
 Date

OFFICE OF COUNTY RECORDER  
 COUNTY OF CASS

I hereby certify that the within instrument was filed in the office for record on the \_\_\_\_\_ day of \_\_\_\_\_ A.D., 20\_\_\_\_ at \_\_\_\_\_ o'clock \_\_\_\_\_ M. and was duly Microfilmed as document no. \_\_\_\_\_

County Recorder \_\_\_\_\_  
 By \_\_\_\_\_ Deputy



North Quarter Corner of Section 28, Township 135 North, Range 32 West

The following offices were contacted for information on this corner:

Cass County Auditor's Office  
Cass County Recorder's Office  
Cass County Surveyor's Office  
Wadena County Recorder's Office  
Wadena County Highway Department  
Minnesota Department of Natural Resources  
Minnesota Department of Transportation  
Sunde Land Surveying, Inc.  
Meadowland Surveying, Inc.  
Westwood Professional Services, Inc.  
Files and records of Anderson Land Surveying, Inc.

In 1866, Oscar E. Garrison, GLO Deputy Surveyor, set post for the corner and made a reference tie to a Black Pine.

In 1902 Byron Township (per Township Road order) built a township road from the center of Section 28, southerly on the quarter line through Sections 28 and 33.

In 1915 and 1916, E.B Horst, Deputy Cass County Surveyor, in County Surveyor's Survey Record No. 382, surveyed the north line of Section 28, but did not mark this corner.

In October, 2010, I made thorough search of area. I placed a 1 inch pipe capped "PLS 13620 & 17825" single proportionate between the Northwest and Northeast corners of Section 28. The position lines up with the extension of a township road to the south. I made new ties as noted on page 1. Cass County coordinates are also noted for this corner on page 1.

For further information contact David A. Anderson, PLS of Anderson Land Surveying, Inc. of Fergus Falls, MN.

**A000572890**  
**OFFICE OF COUNTY RECORDER**  
**CASS COUNTY MINNESOTA**  
**CERTIFIED, FILED, AND/OR**  
**RECORDED ON**  
**08/22/2011 1:14:54 PM**  
**AS DOC #: A000572890**  
**PAGES: 2 REC FEES: 0.00**  
**KATHRYN M. NORBY**  
**COUNTY RECORDER**