

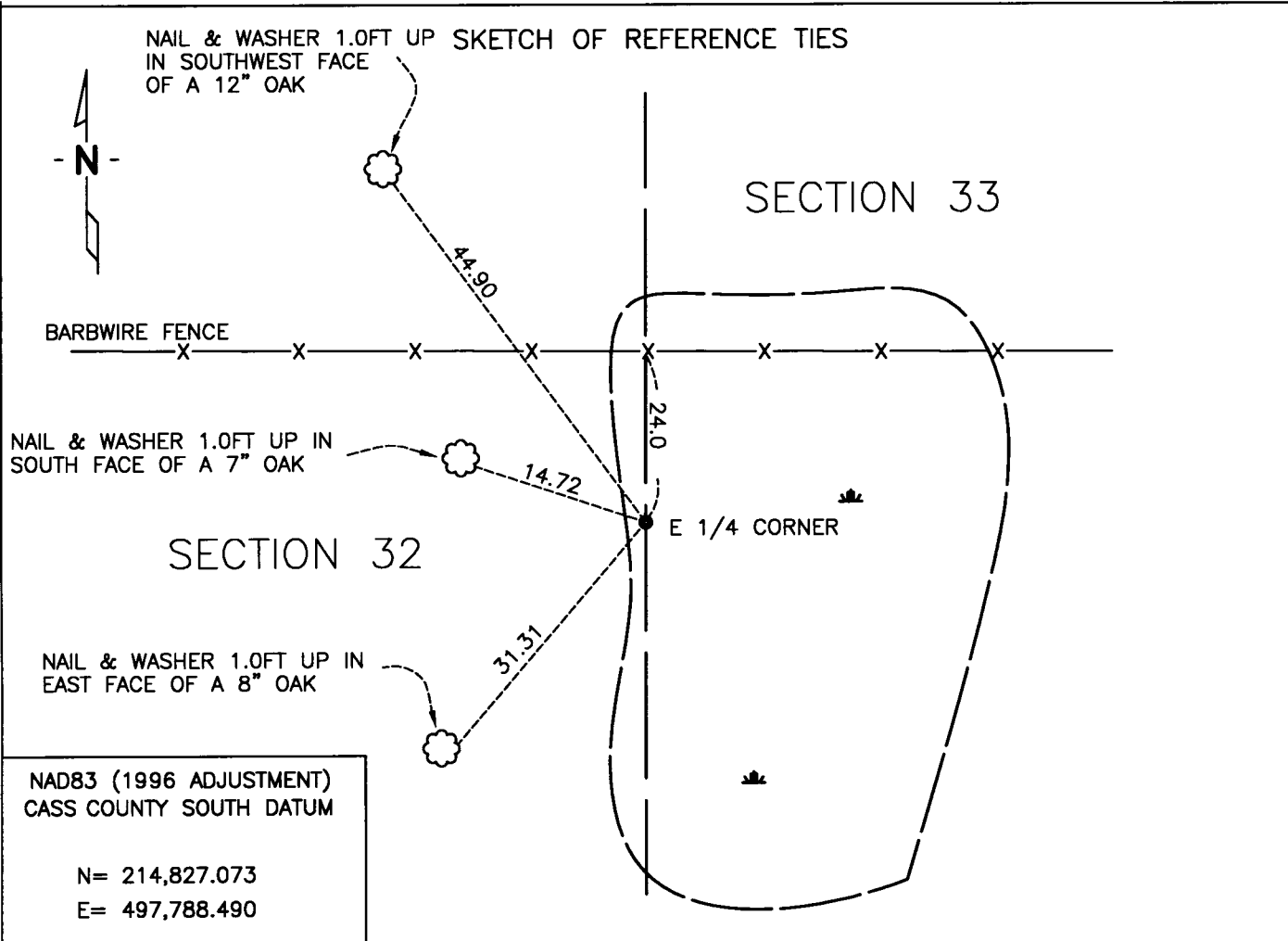
CERTIFICATE OF LOCATION OF GOVERNMENT CORNER

EAST 1/4 Corner of Section 32, Township 135, Range 30, 5th P.M.

STATE OF MINNESOTA, County of CASS

At the corner location shown on the sketch:

- On 12/10/10 found FOUND IRON PIPE WITH RLS#23668
- left monument as found, lowered monument, removed monument (explain)
- On _____ PLACED _____
DATE



Statement of evidence relative to this corner location is on back of page.

I hereby certify that this document and the data contained herein was prepared by me or under my direct supervision.

[Signature] 02/14/11
SURVEYOR DATE

Registration No. 44530

- Land surveyor,
- County Surveyor,

OFFICE OF THE COUNTY RECORDER

County of _____

I hereby certify that this document was filed in the Co. Recorders office at ____M. on the _____ day of _____ A.D., 20__

County Recorder _____

By _____, Deputy

DOCUMENT NO. _____

Statement of Evidence:**East Quarter Corner of Section 32, Township 135 North, Range 30 West**

Oct. 1869 T.B. Walker GLO Deputy Surveyor set a wood post for the original corner and referenced it as follows:

12" Oak S40°E 35 links (23.10 feet)

14" Tam. N35°W 27 links (17.82 feet)

Feb. 1904 Township Road Order shows no survey.

Nov. 2005 K.L.D. Surveying of Brainerd set the corner by single proportion on line and mid way between the NW and SW corners of section 33.

Nov. 2010 Craig E. Johnson, LS, CFedS, found a 1/2" pipe capped No. 23668, the iron matched the position of the K.L.D. survey. The pipe was accepted as the corner and reference ties set as depicted on the face of this certificate.

A000568484
OFFICE OF COUNTY RECORDER
CASS COUNTY MINNESOTA
CERTIFIED, FILED, AND/OR
RECORDED ON
02/23/2011 07:53:12 AM
AS DOC #: A000568484
PAGES: 2 REC FEES: 0.00
KATHRYN M. NORBY
COUNTY RECORDER