

# CERTIFICATE OF LOCATION OF GOVERNMENT CORNER

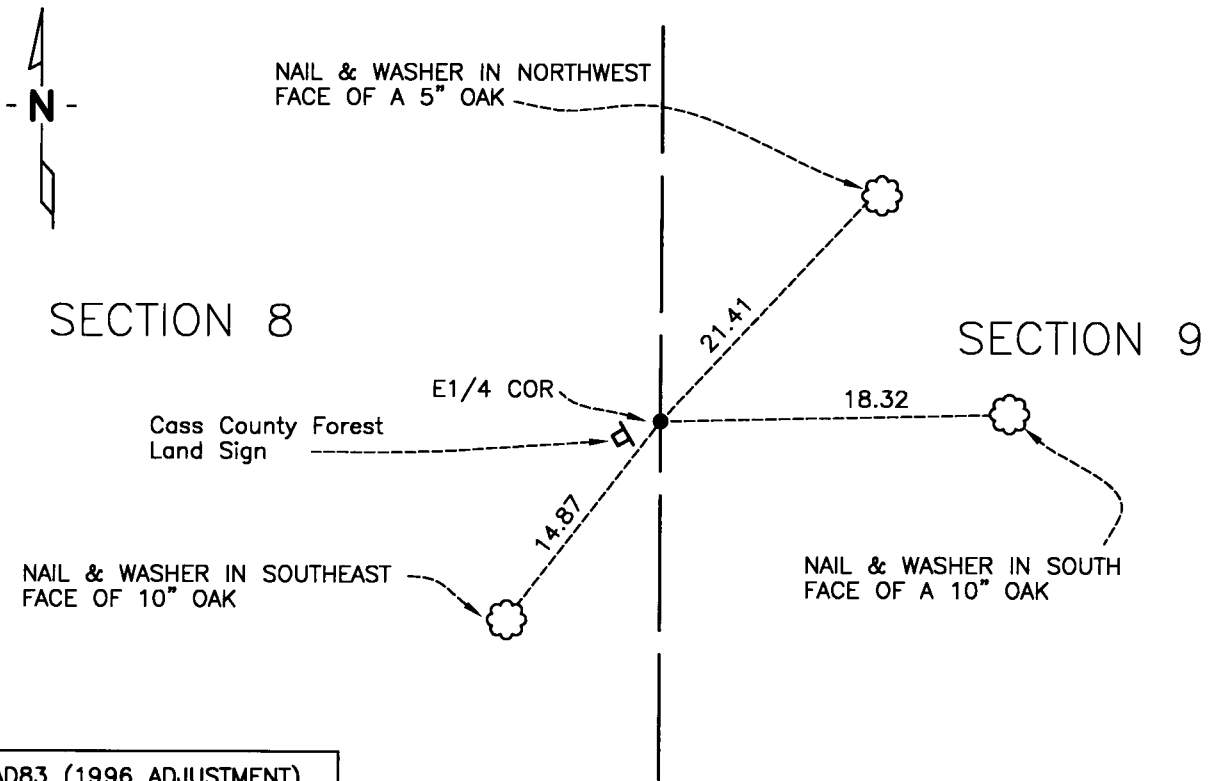
EAST 1/4 Corner of Section 8, Township 136, Range 30, 5th P.M.

STATE OF MINNESOTA, County of CASS

At the corner location shown on the sketch:

- On 11/17/10 found 1/2IN IRON PIPE
- left monument as found,  lowered monument,  removed monument (explain)
- On \_\_\_\_\_ PLACED \_\_\_\_\_  
DATE

## SKETCH OF REFERENCE TIES



NAD83 (1996 ADJUSTMENT)  
CASS COUNTY SOUTH DATUM

N= 263,541.811  
E= 497,258.208

Statement of evidence relative to this corner location is on back of page.

I hereby certify that this document and the data contained herein was prepared by me or under my direct supervision.

*[Signature]*  
SURVEYOR

2/10/11  
DATE

Registration No. 44530

- Land surveyor,
- County Surveyor,

## OFFICE OF THE COUNTY RECORDER

County of \_\_\_\_\_

I hereby certify that this document was filed in the Co. Recorders office at \_\_\_\_M. on the \_\_\_\_\_ day of \_\_\_\_\_ A.D., 20\_\_\_\_

County Recorder \_\_\_\_\_

By \_\_\_\_\_, Deputy

DOCUMENT NO. \_\_\_\_\_



Statement of Evidence:**East Quarter corner of Section 8, Township 136 North, Range 30 West**

Oct. 1870 R. Cronk, GLO Deputy Surveyor set a wood post for the original corner and referenced it as follows:

4" Aspen N80°W 9 links (5.94 feet)  
5" Tam. S37°E 35 links (23.10 feet)

1981 Landecker's Pequot office surveyed Section 9 in 1981, their section breakdown shows that they set 1/2" iron pipes at the NW, W1/4 and SW corners of said section 9.

Dec. 2004 B. Grima, LS 17253, Westwood certificate of survey in the Southwest 1/4 of Section 9 on file at Cass County shows iron monument set, (Chris Hogle, LS of Westwood's Brainerd office said that they held Landecker's positions for the west line of said Section 9).

Nov. 2010 Craig E. Johnson, LS, CFedS, found a 1/2" open pipe that matched the position of the Westwood and Landecker corner. The pipe was accepted as the corner and reference ties set as depicted on the face of this certificate.

**A000568463**  
**OFFICE OF COUNTY RECORDER**  
**CASS COUNTY MINNESOTA**  
**CERTIFIED, FILED, AND/OR**  
**RECORDED ON**  
**02/23/2011 07:52:51 AM**  
**AS DOC #: A000568463**  
**PAGES: 2 REC FEES: 0.00**  
**KATHRYN M. NORBY**  
**COUNTY RECORDER**