

CERTIFICATE OF LOCATION OF GOVERNMENT CORNER

NE Corner of Section 10, Township 139N, Range 28W, 5th p.m., State of Minnesota, County of Cass

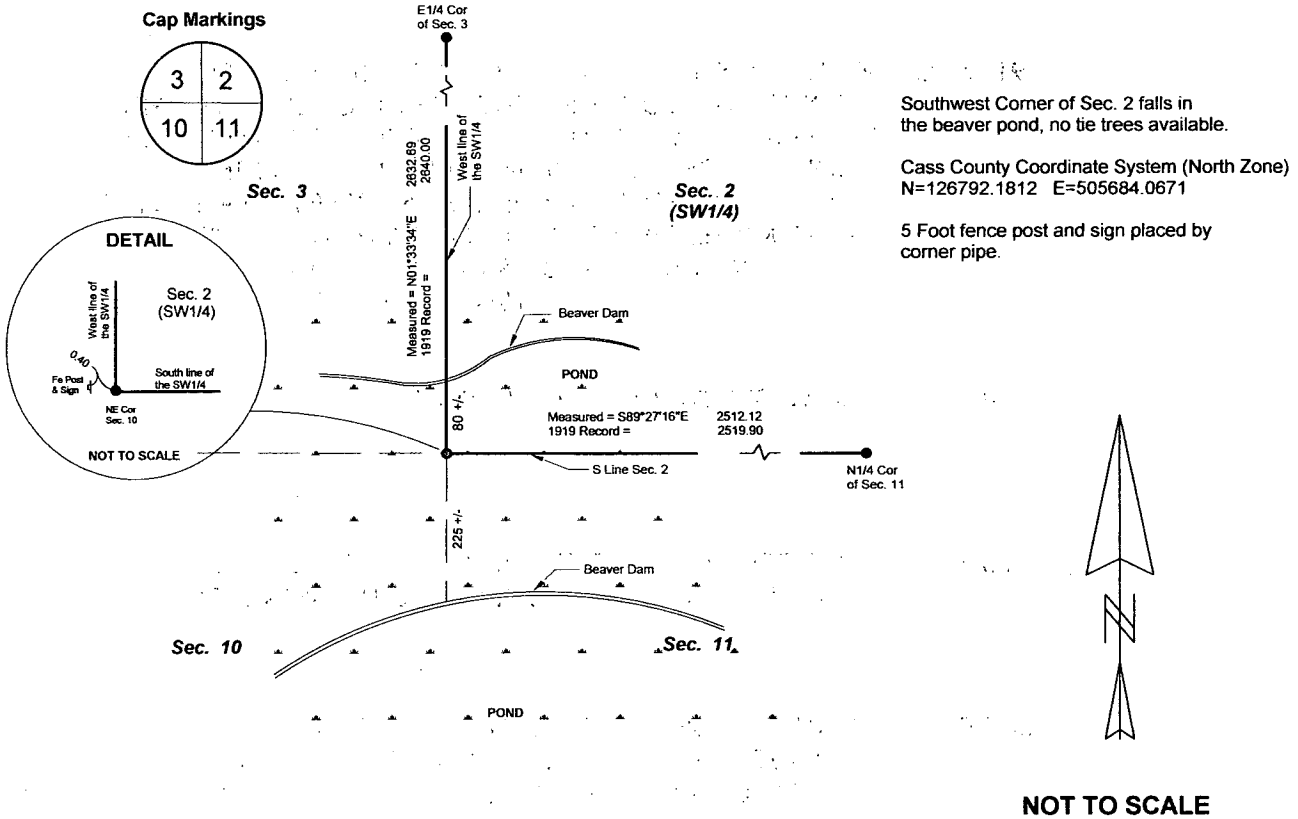
At the corner location shown on the sketch:

On 12/16/2010 found a 2" Capped iron pipe under the ice, leaning to the SE, stood up straight, use for corner.
Date

left monument as found lowered monument removed monument (explain)

On _____ placed a _____
Date

SKETCH OF REFERENCE TIES



Southwest Corner of Sec. 2 falls in the beaver pond, no tie trees available.

Cass County Coordinate System (North Zone)
N=126792.1812 E=505684.0671

5 Foot fence post and sign placed by corner pipe.

Statement of evidence relative to this corner location is on back of page.

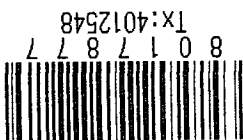
I hereby certify that this document and the data contained herein was prepared by me or under my direct supervision.

Marvin R. Kohout 1/13/11
Marvin R. Kohout Date

Registration No. 17774

Land surveyor

A000567745
OFFICE OF COUNTY RECORDER
CASS COUNTY MINNESOTA
CERTIFIED, FILED, AND/OR
RECORDED ON
01/31/2011 08:35:29 AM
AS DOC #: A000567745
PAGES: 2 REC FEES: 0.00
KATHRYN M. NORBY
COUNTY RECORDER



STATEMENT OF EVIDENCE:

NORTHEAST CORNER OF SECTION 10, TWP. 139 N., RGE 28 W.

1864 APRIL DEPUTY SURVEYORS JOHNSON AND THORNTON IN THE ORIGINAL GOVERNMENT SURVEY SET A POST.

TIES: 5" CHERRY N 70 E 20 LINKS (13.2 FEET)
7" SPRUCE N 22 W 7 LINKS (4.62 FEET)
8" CEDAR S 55 E 4 LINKS (2.64 FEET)
9" SPRUCE S 53W 36 LINKS (23.76 FEET)

1919 AUG BEN F. CLARK, LS #231, FOR A CONTRACTED COUNTY SUBDIVISION FILED IN THE OFFICE OF THE COUNTY RECORDER ON MARCH 3, 1922 AS DOC. NO. 69793. IN COUNTY SURVEYS BOOK C, PAGE 318 CLARK INDICATED HE FOUND THE GOVERNMENT POST, A TIPPED BEARING TREE AND A BEARING TREE STUMP. HE REPLACED THE POST WITH AN IRON PIPE.

NEW TIES : 8" BALSAM N 89 W 13.2
9" BALSAM S 16 E 7

1938 CCC WASHBURN LAKE -- BK#12, PG 4

2003 FEB CASS COUNTY LAND DEPT. EMPLOYEE JERRY LAMON DETECTED A READING UNDER THE ICE IN A BEAVER POND.

2010 DEC. MARVIN R. KOHOUT, LS #17774 AND CREW FOUND A 2" DIAMETER CAPPED IRON PIPE UNDER THE ICE AND ACCEPTED IT AS THE SOUTHWEST CORNER OF SEC. 2

DIRECTION AND DISTANCE TO:

FOUND WEST ¼ CORNER N 01-33-34 E 2632.69
FOUND SOUTH ¼ CORNER S 89-27-16 E 2512.12