

CERTIFICATE OF LOCATION OF GOVERNMENT CORNER

E1/4 Corner of Section 3, Township 139N, Range 28W, 5th p.m., State of Minnesota, County of Cass

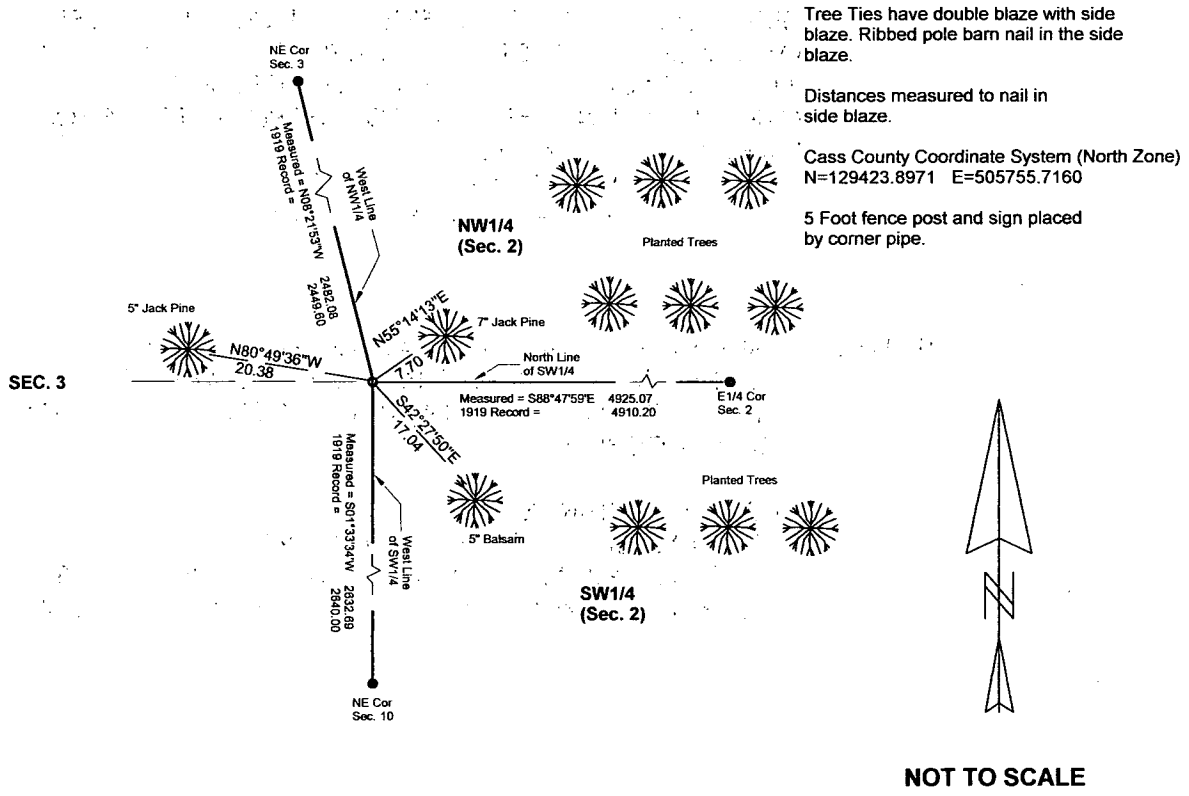
At the corner location shown on the sketch:

On 12/02/2010 found a 2" Iron pipe up 0.3' for corner.
Date

left monument as found lowered monument removed monument (explain)

On _____ placed a _____
Date

SKETCH OF REFERENCE TIES



Statement of evidence relative to this corner location is on back of page.

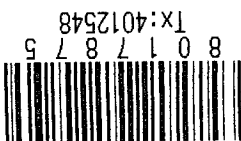
I hereby certify that this document and the data contained herein was prepared by me or under my direct supervision.

Marvin R. Kohout 1/13/11
Marvin R. Kohout Date

Registration No. 17774

Land surveyor

A000567743
OFFICE OF COUNTY RECORDER
CASS COUNTY MINNESOTA
CERTIFIED, FILED, AND/OR
RECORDED ON
01/31/2011 08:35:27 AM
AS DOC #: A000567743
PAGES: 2 REC FEES: 0.00
KATHRYN M. NORBY
COUNTY RECORDER



STATEMENT OF EVIDENCE:

EAST QUARTER CORNER OF SECTION 3, TWP. 139 N., RGE. 28 W.

1864 APRIL DEPUTY SURVEYORS JOHNSON AND THORNTON IN THE ORIGINAL GOVERNMENT SURVEY SET A POST.

TIES: 8" HARD PINE S 85 E 7 LINKS (4.62 FEET)
7" HARD PINE N 85 W 10 LINKS (6.6 FEET)

1919 AUG. BEN F. CLARK, LS #231, FOR A CONTRACTED COUNTY SUBDIVISION FILED IN THE OFFICE OF THE COUNTY RECORDER ON MARCH 3, 1922 AS DOC. NO. 69793. IN COUNTY SURVEYS BOOK C, PAGE 318 CLARK INDICATED HE FOUND THE ORIGINAL BEARING TREES AND POST. HE REPLACED THE POST WITH A 2" x 48" IRON PIPE.

NEW TIES : 14" NOR. PINE N 32 W 23.00
10" JACK PINE S 33 E 10.00

2010 DEC. MARVIN R. KOHOUT, LS #17774 AND CREW FOUND A 2" DIAMETER PIPE UP 0.3 FEET, ALONG THE WEST SIDE OF A PINE PLANTATION. THE FOUND PIPE IS ACCEPTED AS THE WEST QUARTER CORNER

DIRECTION AND DISTANCE TO:

FOUND EAST ¼ CORNER S 88-47-59 E 4925.07
FOUND NORTHWEST CORNER N 08-21-53 W 2482.08
FOUND SOUTHWEST CORNER S 01-33-34 W 2632.69