

CERTIFICATE OF LOCATION OF GOVERNMENT CORNER

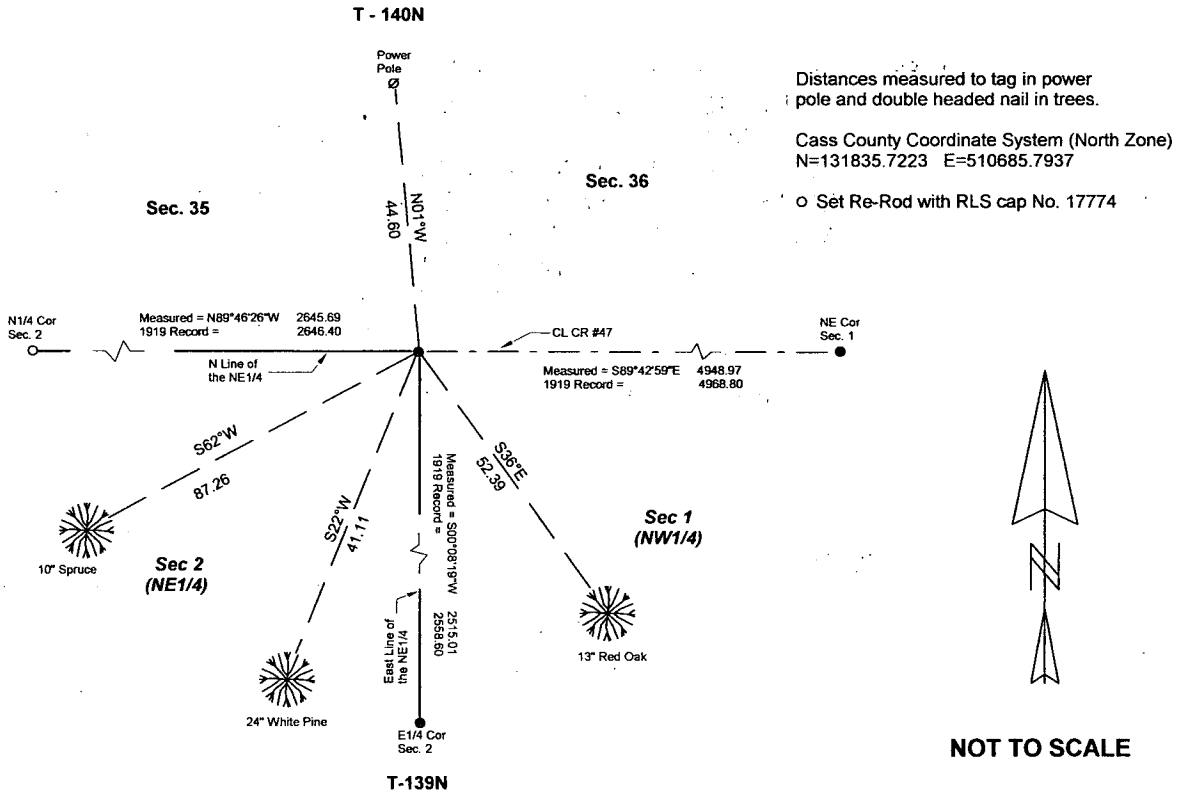
NE Corner of Section 2, Township 139N, Range 28W, 5th p.m., State of Minnesota, County of Cass

At the corner location shown on the sketch:

On 12/02/2010 found a 2" Iron pipe in cl CR #47 for corner.
Date

left monument as found lowered monument removed monument (explain)
On _____ placed a _____
Date

SKETCH OF REFERENCE TIES



Statement of evidence relative to this corner location is on back of page.

I hereby certify that this document and the data contained herein was prepared by me or under my direct supervision.

Marvin R. Kohout 1/13/11
Marvin R. Kohout Date

Registration No, 17774

Land surveyor

A000567742
OFFICE OF COUNTY RECORDER
CASS COUNTY MINNESOTA
CERTIFIED, FILED, AND/OR
RECORDED ON
01/31/2011 08:35:26 AM
AS DOC #: A000567742
PAGES: 2 REC FEES: 0.00
KATHRYN M. NORBY
COUNTY RECORDER



STATEMENT OF EVIDENCE:

NORTHEAST CORNER OF SECTION 2 TWP. 139 N., RGE. 28 W.

- 1864 APRIL DEPUTY SURVEYORS JOHNSON AND THORNTON IN THE ORIGINAL GOVERNMENT SURVEY SET A POST.
TIES: 6" W. BIRCH N 84 E 30 LINKS (19.8 FEET)
10" J. PINE S 78 E 35 LINKS (23.1 FEET)
12" J. PINE S 74 W 41 LINKS (27.06 FEET)
7" W. BIRCH N 18 W 6 LINKS (3.96 FEET)
- 1914 TOWNSHIP ROAD ORDER (NO SURVEY)
- 1919 SEPT. BEN F. CLARK, LS #231, FOR A CONTRACTED COUNTY SUBDIVISION FILED IN THE OFFICE OF THE COUNTY RECORDER ON MARCH 3, 1922 AS DOC. NO. 69793. IN COUNTY SURVEYS BOOK C, PAGE 316 CLARK INDICATED HE FOUND A 1-1/2" IRON PIPE AND 2 BEARING TREES. HE REPLACED THE FOUND PIPE WITH A 3"X 30" IRON PIPE IN THE ROAD.
NEW TIES : 14" W. PINE N 87 W 41.9
20" W. PINE S 89 E 50.3
23" W. PINE S 87-30 E 106.2
- 1939 CCC WASHBURN LAKE- BK#12, PG 1
- 2000 CASS COUNTY SURVEYORS OFFICE FINDS A 2" IRON PIPE AND DRIVES IT DOWN 0.3 BELOW THE ROAD SURFACE.
NEW TIES(TO DOUBLE HEADED NAILS) : TAGGED P. POLE N 1 W 44.6
13" R. OAK S 36 E 52.39
24" W. PINE S 22 W 41.11
10" SPRUCE S 62 W 87.26
- 2010 DEC. MARVIN R. KOHOUT, LS #17774 AND CREW FOUND THE 2" IRON PIPE NOTED IN 2000 AND ACCEPTED IT AS THE NE CORNER OF SECTION 2.
- DIRECTION AND DISTANCE TO:
ESTABLISHED NORTH 1/4 CORNER S 89-46-26 E 2645.69
FOUND EAST 1/4 CORNER S 00-08-19 W 2515.01
FOUND NE CORNER SEC. 1 S 89- 42-59 E 4948.97