

CERTIFICATE OF LOCATION OF GOVERNMENT CORNER

N1/4 Corner of Section 2, Township 139N, Range 28W, 5th p.m., State of Minnesota, County of Cass

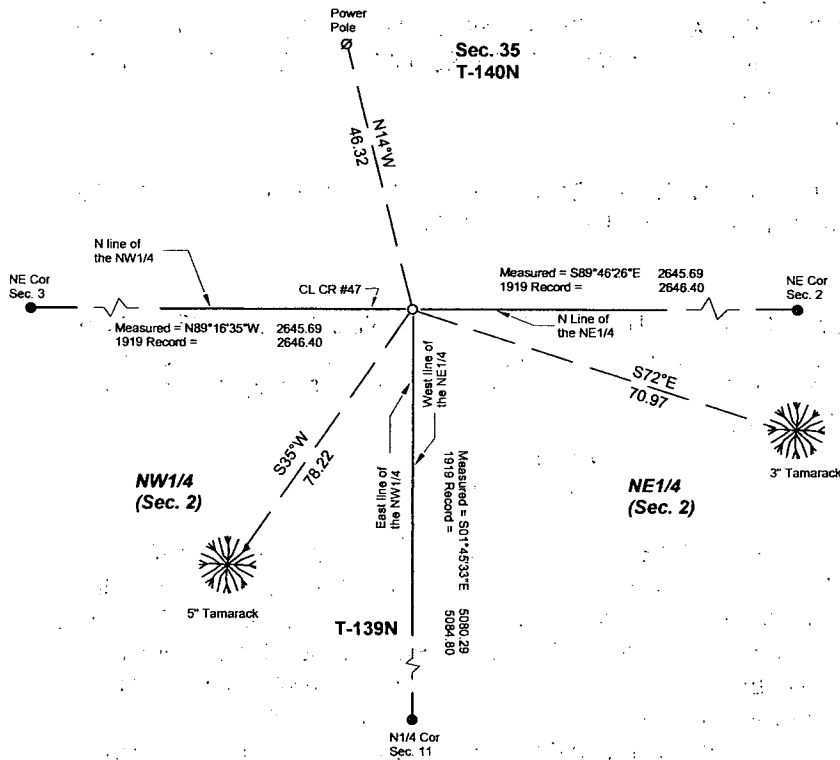
At the corner location shown on the sketch:

On _____ found a _____
Date _____

left monument as found lowered monument removed monument (explain)

On 12/16/2010 placed a Re-Rod with RLS cap No. 17774 for N1/4 corner
Date _____

SKETCH OF REFERENCE TIES



Tree ties have double blaze with a side blaze. Ribbed pole barn nail in side blaze.

Distances measured to nail in side blaze, east face of power pole.

Cass County Coordinate System (North Zone)
N=131846.1598 E=508040.1193

○ Set Re-Rod with RLS cap No. 17774



NOT TO SCALE

Statement of evidence relative to this corner location is on back of page.

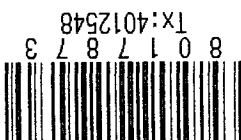
I hereby certify that this document and the data contained herein was prepared by me or under my direct supervision.

Marvin R. Kohout 1/13/11
Marvin R. Kohout Date

Registration No. 17774

Land surveyor

A000567741
OFFICE OF COUNTY RECORDER
CASS COUNTY MINNESOTA
CERTIFIED, FILED, AND/OR
RECORDED ON
01/31/2011 08:35:25 AM
AS DOC #: A000567741
PAGES: 2 REC FEES: 0.00
KATHRYN M. NORBY
COUNTY RECORDER



STATEMENT OF EVIDENCE:

NORTH QUARTER CORNER OF SECTION 2, TWP. 139N, RGE. 28W

1864 APRIL DEPUTY SURVEYORS JOHNSON AND THORNTON IN THE ORIGINAL GOVERNMENT SURVEY SET A POST.

TIES: 10" TAM N 20 W 5 LINKS (3.3 FEET)
7" TAM S 43 E 13 LINKS (8.58 FEET)

1919 JULY BEN F. CLARK, LS #231, FOR A CONTRACTED COUNTY SUBDIVISION FILED IN THE OFFICE OF THE COUNTY RECORDER ON MARCH 3, 1922 AS DOC. NO. 69793. IN COUNTY SURVEYS BOOK C, PAGE 317 CLARK INDICATED HE FOUND THE ORIGINAL BEARING TREES AND POST. HE REPLACED THE POST WITH A 2" x 48" IRON PIPE.
NO NEW TIES.

1938 CIVILIAN CONSERVATION CORPS SETS AN APPROXIMATE CORNER 2640 FEET WEST OF THE NE CORNER

2001 APRIL CASS COUNTY SURVEYORS OFFICE FINDS A 60D SPIKE, DOWN 0.3, APPROXIMATELY 1 FOOT SOUTH OF THE C/L OF COUNTY ROAD NO. 47. THREE TIES WERE MADE TO DOUBLE HEADED NAILS. TIES: 3" TAM S 74 E 78.64
5" TAM S 30 W 74.20
P. POLE N 4 W 46.28

2010 DEC. MARVIN R. KOHOUT, LS AND CREW FOUND AN ADDITIONAL SPIKE 12.48 NORTHERLY OF THE SPIKE FOUND IN 2001 AND IN LINE WITH A POWER LINE GOING NORTH. NEITHER OF THE SPIKES IS CLOSE TO MIDWAY BETWEEN THE NE AND NW SECTION CORNERS, AS INDICATED ON CLARK'S DRAWING. PRESENT MEASUREMENT OF THE NORTH SECTION LINE IS NEAR THAT OF CLARK'S 1919 DIMENSION. THEREFORE, A CAPPED 3/8 REBAR WAS PLACED IN THE ROAD MIDWAY BETWEEN THE NW SEC. CORNER AND THE NE SEC. CORNER TO MARK THE N1/4 COR.

DIRECTION AND DISTANCE TO:

FOUND NORTHEAST CORNER	S 89-46-26 E 2645.69
FOUND NORTHWEST CORNER	N 89-16-35 W 2645.69
FOUND SOUTH 1/4 CORNER	S 01-45-33 E 5080.29