



8 0 1 0 1 8 6
Tx: 4007179

A000562185

OFFICE OF COUNTY RECORDER
CASS COUNTY MINNESOTA
CERTIFIED, FILED, AND/OR
RECORDED ON

07/28/2010 08:52:27 AM

AS DOC #: A000562185

PAGES: 2 REC FEES: 0.00

KATHRYN M. NORBY
COUNTY RECORDER

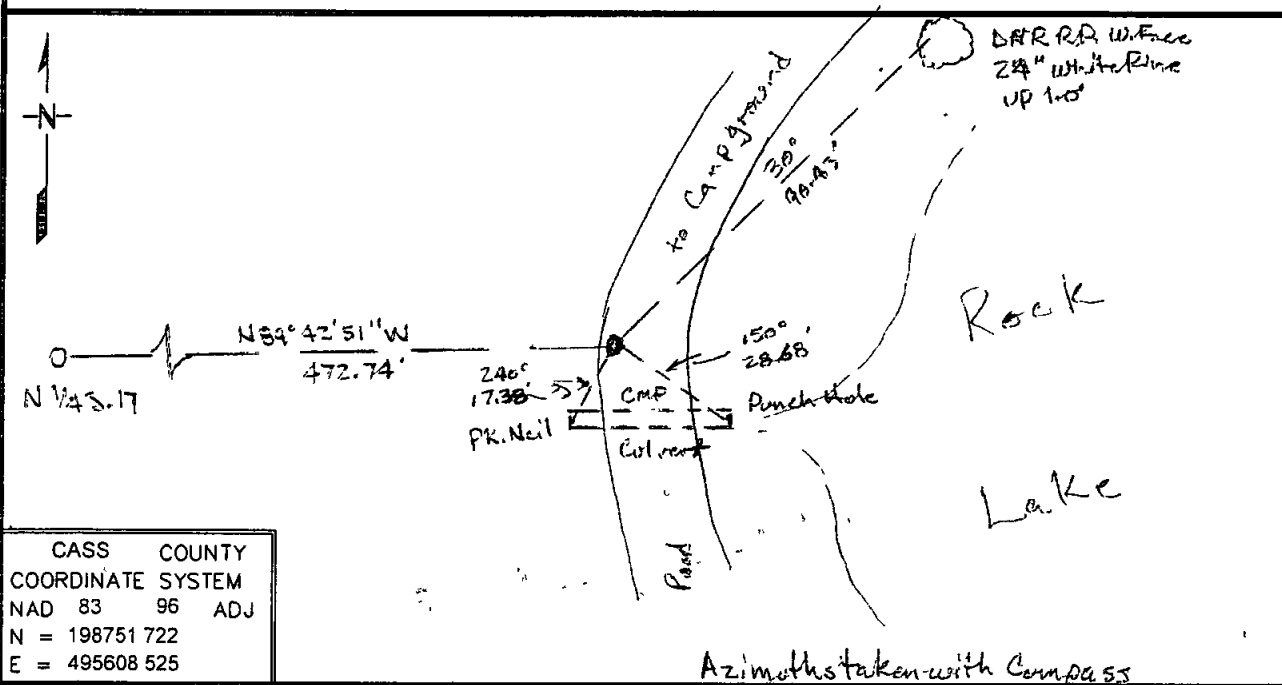
Index No J-7-8

CERTIFICATE OF LOCATION OF GOVERNMENT CORNER

WITNESS TO M.C. _____ Corner of Section 17 , Township 134 , Range 30
5TH Principal Meridian, State of Minnesota, County of CASS

At the corner location shown on the sketch.

- On _____ found a _____
DATE _____
- left monument as found, lowered monument, removed monument (explain)
- On 11/19/07 Placed a 3/4 INCH X 12 INCH REBAR WITH PLASTIC CAP
DATE _____
STAMPED "MN DNR LS 16098"



CASS COUNTY
COORDINATE SYSTEM
NAD 83 96 ADJ
N = 198751 722
E = 495608 525

Statement of evidence for this corner location is on back of this page

JDW - 2/25/08
SFT00039 - 1110

I certify that this document was researched and prepared by me or under my direct supervision

SIGNATURE John D. Walker DATE 10/8/08 License Number 16098

Title: Land Surveyor Professional Engineer County Surveyor County Engineer

Witness Corner to Meander Corner on North Line Section 17, Township 134 North, Range 30 West

The Department of Natural Resources, Division of Lands and Minerals, contacted the following office for information regarding this corner:

MN Secretary of State
 Cass County Surveyor's Office
 Kramer Leas DeLeo
 Westwood Professional Services
 Widseth Smith Nolting & Associates
 Landecker and Associates

- 1868 The US General Land Office field notes, on file in the Secretary of State's Office, show the Meander Corner to be marked with a post and following bearing tree:
 W. Pine 16" North 11 links (7.26')
 A distance of 8.25 chains (544.5') was measured from the north quarter corner and the MC fell 1.25 chains (82.5') easterly of the inlet to the lake. This section line was run East 48.25 chs. (3184.5') on a true line from the Northwest Corner Section 17 and terminated at this meander corner.
- 1972 Plat of Orchard Park by Dean Anderson shows an iron pipe on the north line of section 17 by a bearing and distance from the plat monuments. The distance from the pipe on the north line to the Northwest corner is 3074.57'. No mention of quarter corner.
- 1994 In April the DNR Survey crew located monuments on the plat of Orchard Park and computed a position for the northwest corner of section 17. Searched for iron pipe shown on the above plat and found a 1" x 27" iron pipe laying down under the water below beaver dam refuse. The iron pipe is 11.6' west of the centerline of the campground road and 13.8' north of a culvert under the road. The iron pipe was reset per plat. No search was made for the Meander Corner.
- 1997 June, Landecker and Assoc. surveyed a parcel in Government Lot 2 of section 17. They show an iron pipe on the north line of the section 474.68' easterly of the north quarter corner. The north quarter corner is shown on line between the pipe on the north line and the northwest corner.
- 1999 In May, DNR forestry personnel informed the DNR Surveyor of the above iron pipe being removed by a backhoe that was unplugging the culvert that had been dammed up by the beavers.
- 2007 In November, the DNR survey crew searched for evidence of the iron pipe set near the Meander Corner area and found nothing. They were informed by DNR forestry that the culvert had washed out in 2000 and the road rebuilt sometime thereafter. Monuments were found in the Plat of Orchard Park and the point on the north line of the section was recomputed. A 3/4 " x 12" iron rod with a plastic cap marked LS 16098 was set in the road to the campground north of the culvert for the creek.
 Northeast Corner Section 18 bears N89°42'51"W 3073.05'
 North Quarter Section 17 bears N89°42'51"W 472.74'

For more information on our survey in this area, please contact MN DNR, Division of Lands and Minerals, Survey Section, 1601 Minnesota Drive, Brainerd, MN 56401