

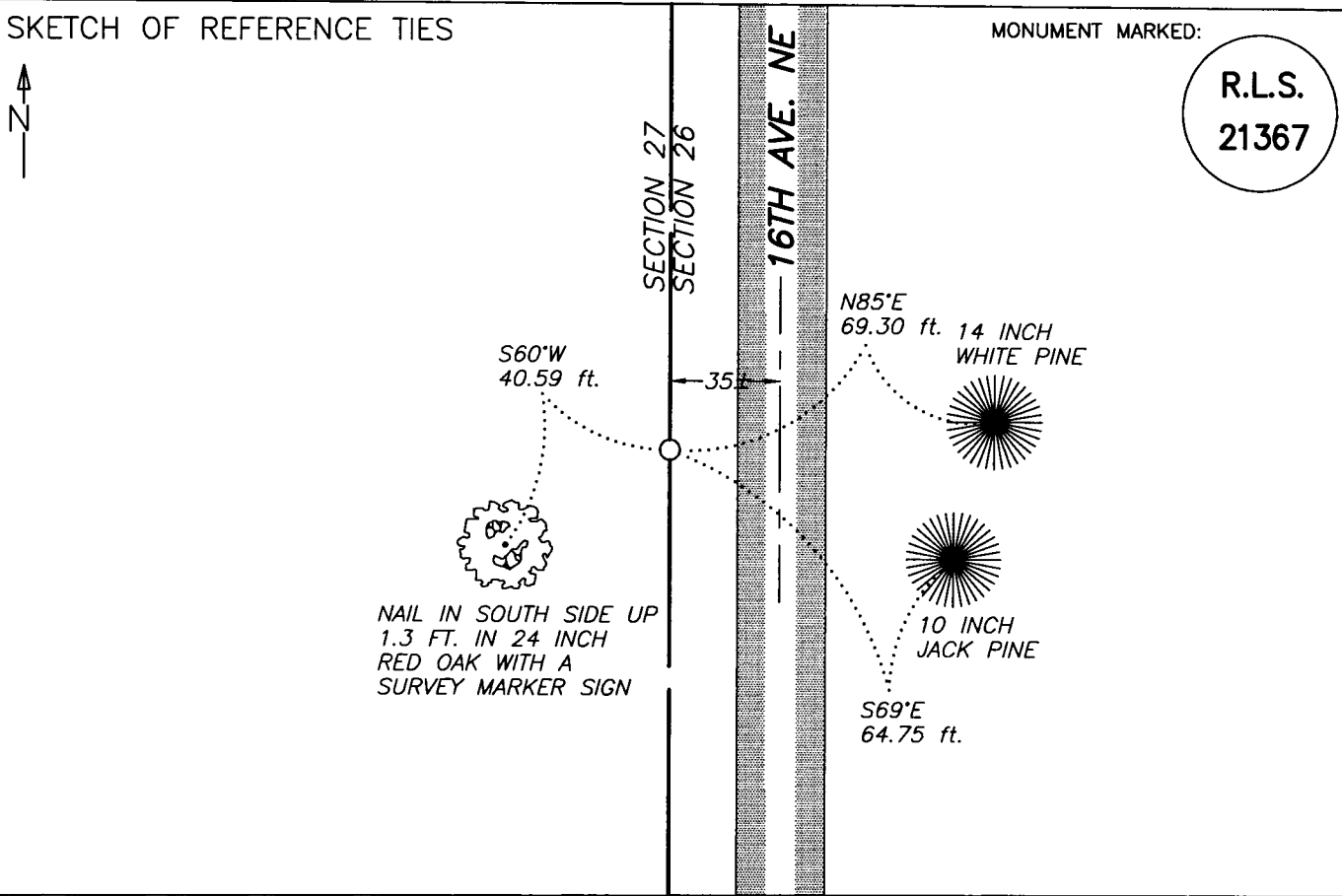
CERTIFICATE OF LOCATION OF GOVERNMENT CORNER

INDEX NO. T-17 EAST QUARTER CORNER OF SECTION 27, TOWNSHIP 145N, RANGE 28W, 5TH P.M.
 STATE OF MINNESOTA, COUNTY OF CASS

AT THE CORNER LOCATION SHOWN ON THE SKETCH:

- ON 8-18-2008 FOUND A(N) 1/2 inch iron pipe flush with the ground surface with plastic cap
DATE
marked RLS 21367
- LEFT MONUMENT AS FOUND, LOWERED MONUMENT, REMOVED MONUMENT (EXPLAIN)
- ON 8-18-2008 PLACED A(N) Left the iron monument as found
DATE

SKETCH OF REFERENCE TIES



STATEMENT OF EVIDENCE RELATIVE TO THIS CORNER LOCATION IS ON BACK OF PAGE

I HEREBY CERTIFY THAT THIS DOCUMENT AND THE DATA CONTAINED HEREIN WAS PREPARED BY ME OR UNDER MY DIRECT SUPERVISION.

[Signature] 1/26/09
SIGNATURE DATE

REGISTRATION NO. 14455

LAND SURVEYOR PROFESSIONAL ENGINEER
 COUNTY SURVEYOR COUNTY ENGINEER

OFFICE OF THE COUNTY RECORDER

COUNTY OF CASS

I HEREBY CERTIFY THAT THIS DOCUMENT WAS FILED IN THE COUNTY RECORDERS OFFICE AT _____ .M. ON THE _____ DAY OF _____ A.D., 20____

COUNTY RECORDER _____
 BY _____ DEPUTY

DOCUMENT NO. _____



STATEMENT OF EVIDENCE

- 1873 *The U.S. General Land Office survey set a wood post to mark the location of this corner & marked two bearing trees as accessories:*
- 14 inch Norway Pine N 36° W 70 links (46.20 feet)
12 inch Norway Pine N 57° E 64 links (42.24 feet)*
- 1904 *U.S. Army Corps of Engineers Reservoir map shows that the corner was found*
- 1936 *J.A. Gjelhaug did not find any evidence of the original corner post so he set a 1 inch x 12 inch iron bolt at the location according to the record plat of Bena. He marked two bearing trees as accessories.*
- 10 inch White Pine S 31° W 94½ links (62.37 feet)
10 inch White Pine S 7° E 109 links (71.94 feet)*
- 1939 *A DNR Engineering Map on file showing the survey by G. Amidon showing that he found the 2 bearing trees set by J.A. Gjelhaug*
- 2002 *LaVerne Leuelling of Northern Lights Surveying and Mapping, Inc. found an iron pipe marking the location this corner.*
- 2005 *Terry L. Freedman of Landecker & Associates, Inc. did not find any evidence of the corner so he reset this corner using a record distance from the found center quarter corner of Section 27 and a record distance from the found South one-sixteenth corner between Sections 26 and 27. He marked three bearing trees as accessories:*
- 14 inch White Pine N 85° E 69.30 feet
10 inch Jack Pine S 69° E 64.75 feet
24 inch Red Oak S 60° W 40.59 feet*
- 2008 *Ken Metcalf of Northwestern Surveying and Engineering, Inc. was surveying in the area and he found the ½ inch capped iron pipe and the three bearing trees set by Terry Freeman. No additional bearing trees were marked.*

A000560934
OFFICE OF COUNTY RECORDER
CASS COUNTY MINNESOTA
CERTIFIED, FILED, AND/OR
RECORDED ON
06/09/2010 2:04:49 PM
AS DOC #: A000560934
PAGES: 2 REC FEES: 0.00
KATHRYN M. NORBY
COUNTY RECORDER